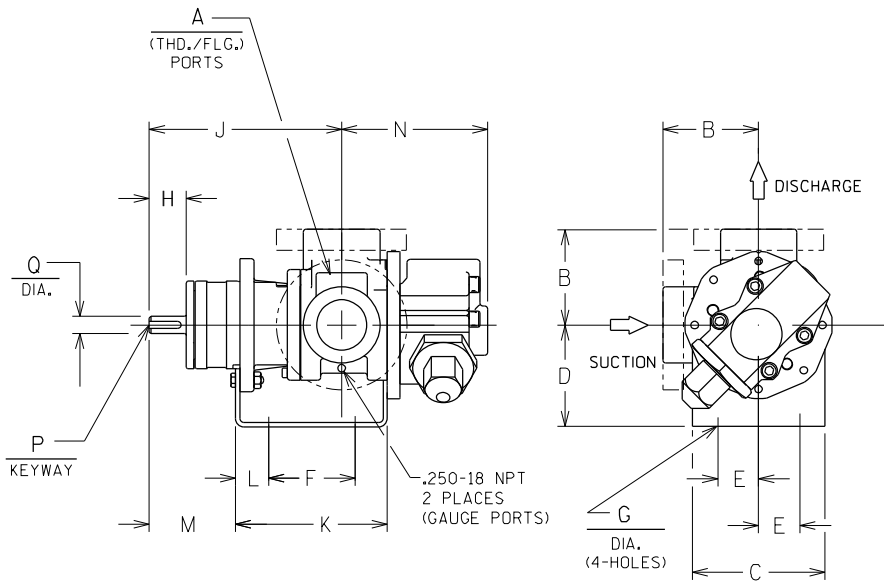


90° HOUSING PORTS
HEAD MOUNTED RELIEF VALVE
BASIC PUMP MODEL



16464 B

PUMP MODEL	PORT DIMENSIONS				PUMP DIMENSIONS														
	A	FLG. ANSI	B	THD. NPT	B	C	D	E	F	G	H	J	K	L	M	N	P	Q	
GHC D	1'	—	—	1.00-11.5	2.50 [64]	4.00 [102]	3.50 [89] *	4.50 [114]	1.62 [41]	3.12 [79]	.41 [10]	1.16 [30]	6.19 [157]	5.04 [128]	.76 [19]	2.62 [66]	2.74 [70]	.12 [3] x .75 [19]	.50 [13]
							5.25 [133]												
GHC G	1- 1/2'	150* 300*	4.00 [102]	1.50-11.5	3.50 [89]	5.88 [149]	3.50 [89] *	4.50 [114]	1.62 [41]	4.00 [102]	.41 [10]	1.62 [41]	8.50 [216]	6.71 [170]	1.06 [27]	3.82 [97]	3.35 [85]	.19 [5] x 1.25 [32]	.75 [19]
							5.25 [133]												
GHC J	2'	—	—	2.00-11.5	3.50 [89]	4.50 [114]	4.50 [114]	5.25 [133] *	1.62 [41]	4.00 [102]	.41 [10]	1.16 [30]	6.19 [157]	5.04 [128]	.76 [19]	2.62 [66]	2.74 [70]	.12 [3] x .75 [19]	.50 [13]
							5.25 [133]												
GHC J	2- 1/2'	150* 300*	6.31 [160]	3.00-8	4.50 [114]	6.88 [175]	6.25 [159]	7.00 [178]	2.88 [73]	4.25 [108]	.44 [11]	2.50 [64]	12.12 [308]	9.75 [248]	1.75 [44]	5.50 [140]	4.66 [118]	.25 [6] x 2.00 [51]	1.00 [25]
							8.00 [203]												
GHC J	3'	150* 300*	6.31 [160]	3.00-8	4.50 [114]	6.88 [175]	6.25 [159]	7.00 [178]	2.88 [73]	4.25 [108]	.44 [11]	2.50 [64]	12.12 [308]	9.75 [248]	1.75 [44]	5.50 [140]	4.66 [118]	.25 [6] x 2.00 [51]	1.00 [25]
							8.00 [203]												

* STANDARD DIMENSION

CLOCKWISE ROTATION
(FROM SHAFT END)

DIMENSIONS:
INCHES
[MILLIMETERS]

DO NOT SCALE DRAWING
CAD/CAM FILE NO.: 16464.S01



THE GORMAN-RUPP COMPANY
MANSFIELD, OHIO USA ST. THOMAS, ONTARIO CANADA

DATE 3-22-94
REV

DWN. BY SAR
SCALE NONE

MODEL GHC 90°
OUTLINE No. 16464