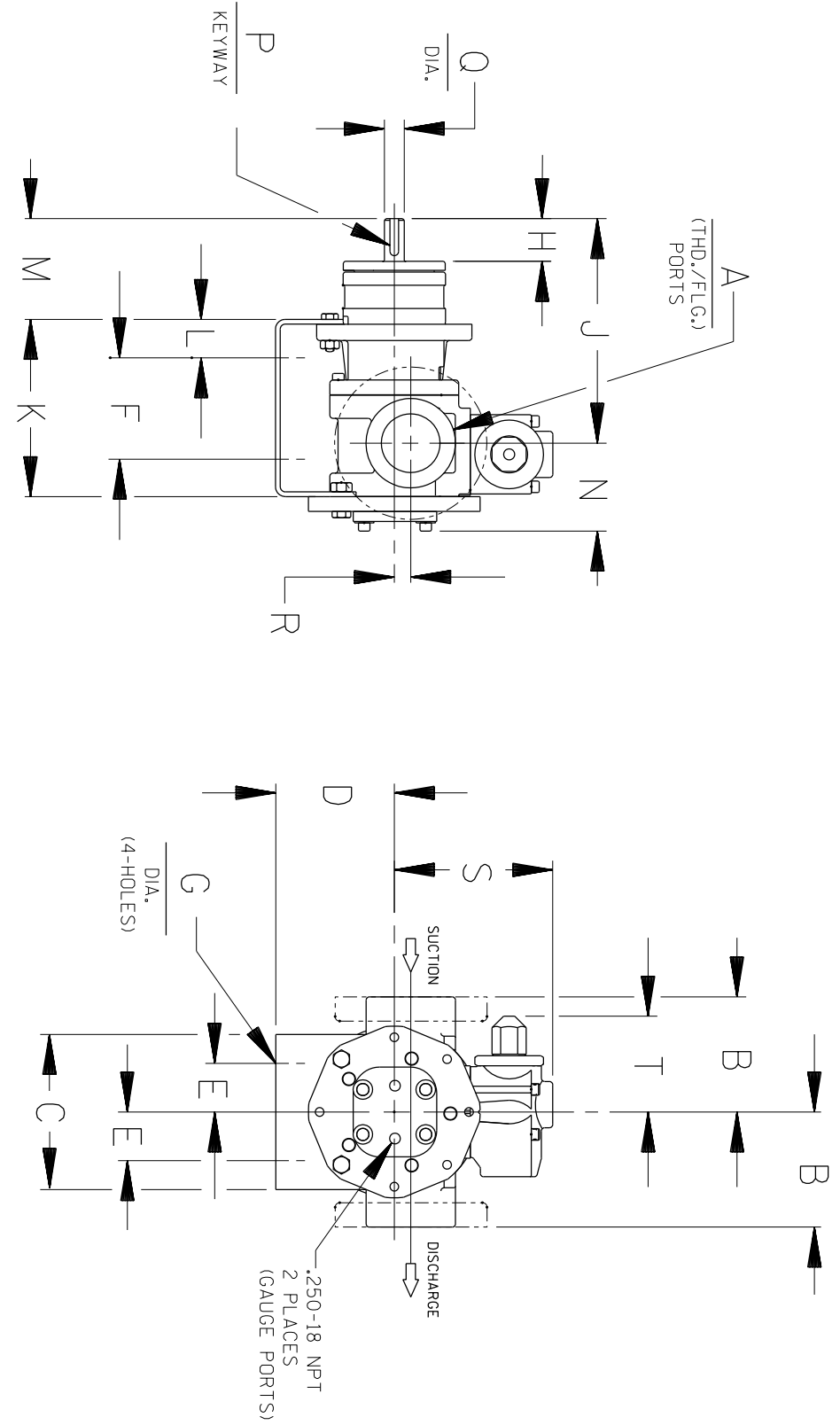


16458D



CAD FILE NO.: 16458A

CLOCKWISE ROTATION
(FROM SHAFT END)

	THE GORMAN-RUPP CO. MANSFIELD, OHIO ST. THOMAS, ONTARIO	DRAWN BY CSI	SCALE NONE	MODEL GHC/GHS 180°
	DATE 12-11-08	REVISED	OUTLINE NUMBER 16458D	

MODEL NUMBERS	PUMP DIMENSIONS - INCHES [MILLIMETERS]																	
	A	B	C	D	E	F	G	H	J	K	L	M	N	P	Q	R	S	T
GHC D GHS D	1"	4.00 [102]	4.00 [102]	4.50 [114] 3.50* [89]	1.62 [41]	3.12 [79]	.41 [10]	1.16 [30]	6.19 [157]	5.04 [128]	1.76 [44]	2.62 [66]	2.74 [70]	.12 [3]	.50 [13]	.62 [16]	5.19 [132]	3.58 [91]
GHC G GHS G	1-1/2"	4.00 [102]	5.88 [149]	4.50 [114] 5.25 [133]	1.62 [41]	4.00 [102]	.41 [10]	1.62 [41]	8.50 [216]	6.71 [170]	1.06 [27]	3.82 [97]	3.35 [85]	.19 [5]	.75 [19]	.62 [16]	6.00 [152]	3.62 [92]
GHC J GHS J	3"	6.31 [160]	6.88 [175]	4.50 [114] 5.25* [133]	2.88 [73]	4.25 [108]	.44 [11]	2.50 [64]	12.12 [308]	9.75 [248]	1.75 [44]	5.50 [140]	4.66 [118]	.25 [6]	1.00 [25]	1.12 [28]	9.06 [230]	6.75 [171]

* STANDARD DIMENSION PORTS ARE COMPATIBLE WITH 150# OR 300# ANSISTEEL FLANGES. ALL OTHER PORTS ARE TAPPED NPT
 † FOR ANSIPPIPE. OPTIONAL EDIN FLANGES OR TAPPED (BSP) PORTS AVAILABLE FOR EXPORT MARKET.
 ‡ NPT FOR ANSIPPIPE. OPTIONAL (DIN) FLANGES OR TAPPED (BSP) PORTS AVAILABLE FOR EXPORT MARKET.
 † 90° HOUSING

DIMENSIONS:
 INCHES
 [MILLIMETERS]

1. DO NOT SCALE DRAWING.
2. GRAPHICS ARE NOT TO SCALE.
3. PUMP GRAPHICS ARE BASED ON A "G" SIZE PUMP.