

B-15755

B 15755

SUCTION:
8.00 NOMINAL WITH 8 HOLES,
.87/[22,0] DIA. EQUALLY SPACED
ON A 11.73/[298,0] DIA. B.C. OR
8.00-8 NPT COMPANION FLANGE

DISCHARGE:
6.00 NOMINAL WITH 8 HOLES
.87/[22,0] DIA. EQUALLY SPACED
ON A 9.49/[241,0] DIA. B.C. OR
6.00-8 NPT COMPANION FLANGE

.79
[20,0]

.79
[20,0]

.87/[22,0] DIA.
OPEN END SLOT
4 PLACES

2.17
[55,0]

8.86
[225,0]

4.33
[110,0]

17.72
[450,0]

21.65
[550,0]

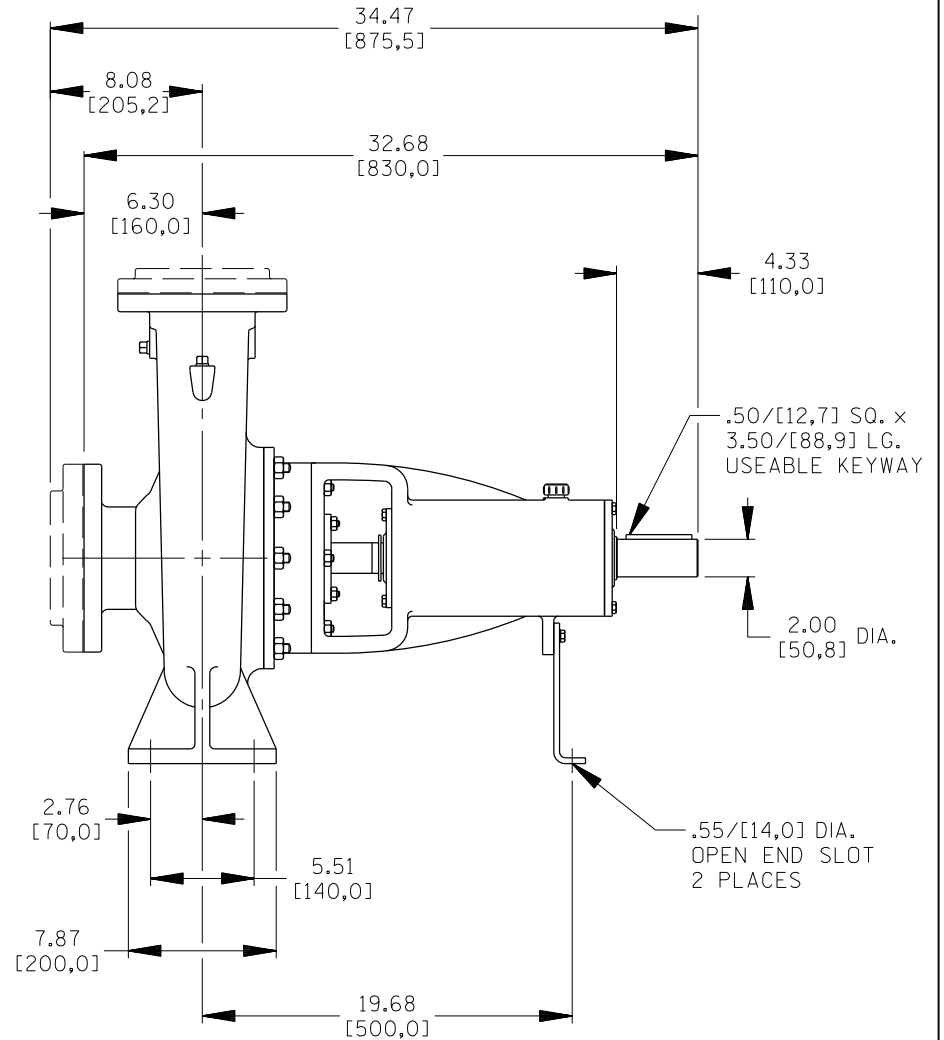
12.40
[315,0]

30.12
[765,0]

31.72
[805,7]

3.94
[100,0]

DIMENSIONS:
INCHES
[MILLIMETERS]



05-029

	THE GORMAN-RUPP CO. MANSFIELD, OHIO ST. THOMAS, ONTARIO		DRAWN BY TNW	SCALE NONE	MODEL VG6D3-B
	DATE 9-7-00	REVISED 7-12-05	OUTLINE NUMBER 15755		