

-SUCTION LINE NOTE-

FOR SELF PRIMING APPLICATION, AVOID HORIZONTAL SUCTION LINES. IF USED, MAXIMUM ACCEPTABLE RUN IS 72.00/[1828,8]. PREFERRED INSTALLATION WOULD ANGLE SUCTION LINE DOWNWARD WITH 45° ELBOW AS SHOWN. LONG HORIZONTAL SUCTION LINES REDUCE EFFICIENCY BY CREATING INCREASED PRIMING TIME, INCREASED OPERATIONAL TIME IN A PARTIAL PRIME CONDITION, SURGING, AND DECREASED SHAFT AND BEARING LIFE.

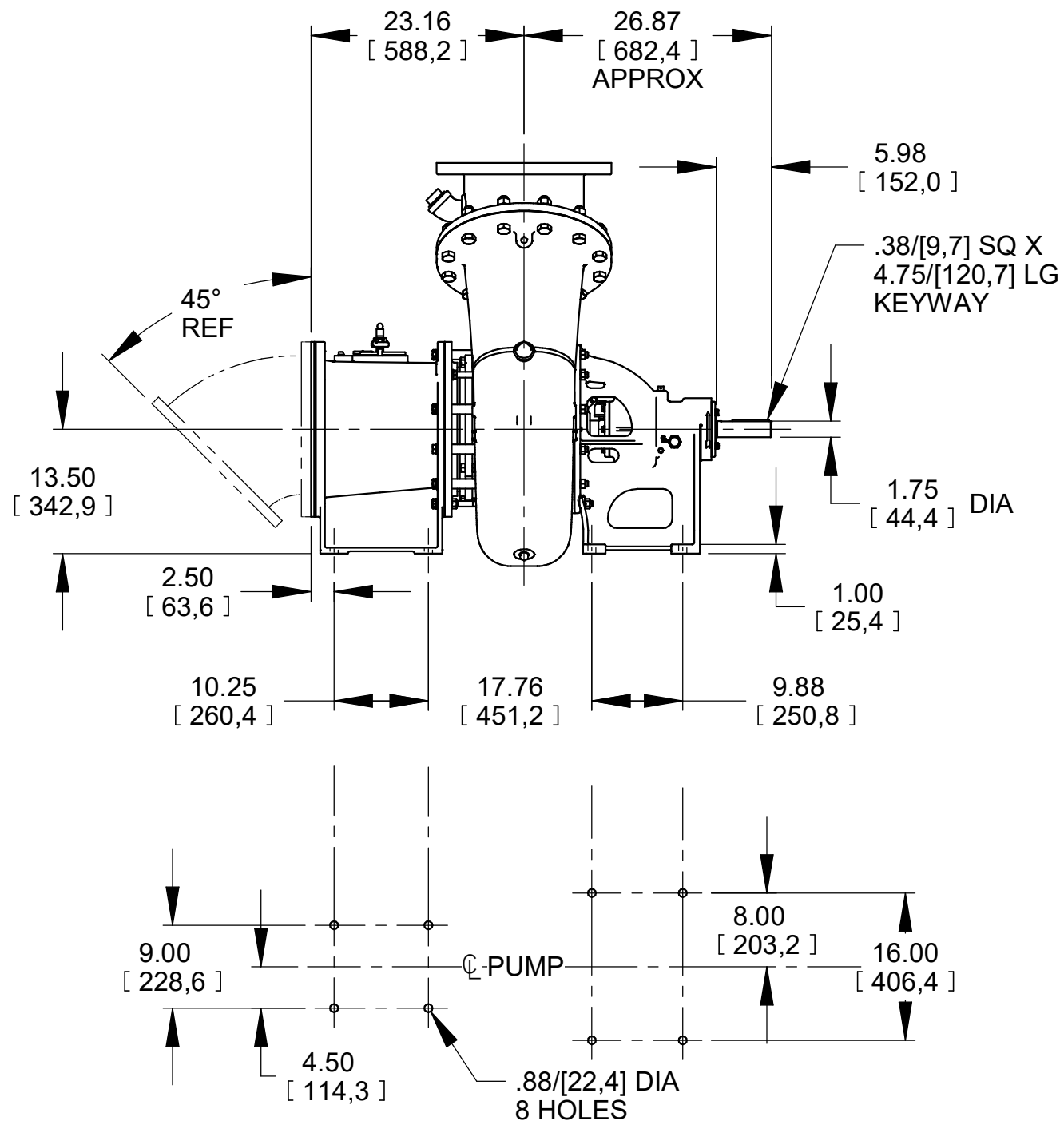
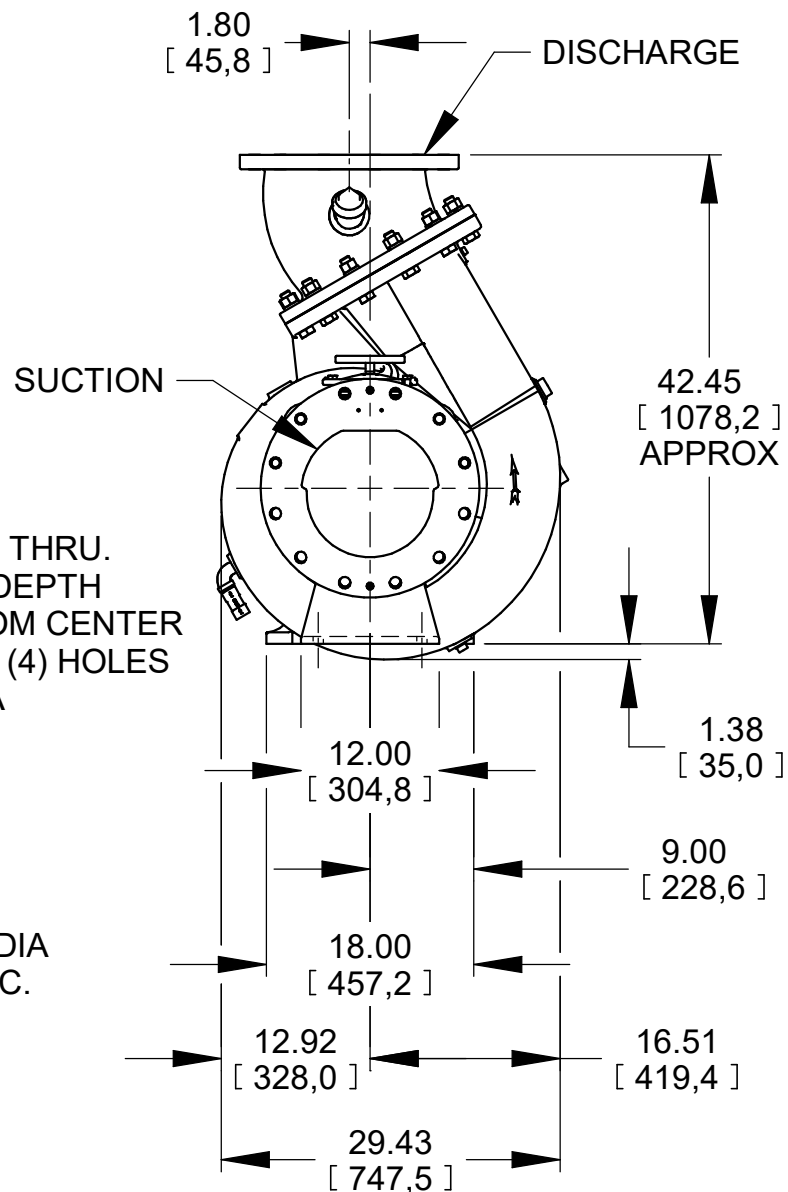
NOTE:  
PUMP DISCHARGE ELBOW MUST BE IN VERTICAL POSITION, AS SHOWN, FOR SELF PRIMING APPLICATIONS.

SUCTION:

BOTTOM 1.00/[25,4] DIA (6) HOLES DRILLED THRU. TOP .875-9 UNC-2B (6) HOLES TAPPED TO DEPTH AS FOLLOWS: (2) HOLES LOCATED 45° FROM CENTER ARE TAPPED 1.31/[33,3] DEEP. REMAINING (4) HOLES TAPPED THRU. ALL HOLES LOCATED ON A 17.00/[431,8] DIA BC.

DISCHARGE:

12.00 NOMINAL WITH 12 HOLES 1.00/[25,4] DIA EQUALLY SPACED ON A 17.00/[431,8] DIA BC.



PLAN VIEW

DIMENSIONS:  
INCHES  
[MILLIMETERS]

19-008



**THE GORMAN-RUPP CO.**  
MANSFIELD, OHIO ST. THOMAS, ONTARIO

DRAWN BY  
CAG  
DATE  
1-10-78

SCALE  
1/16  
REVISED  
03-21-19

MODEL  
112A-B  
OUTLINE NUMBER  
14191