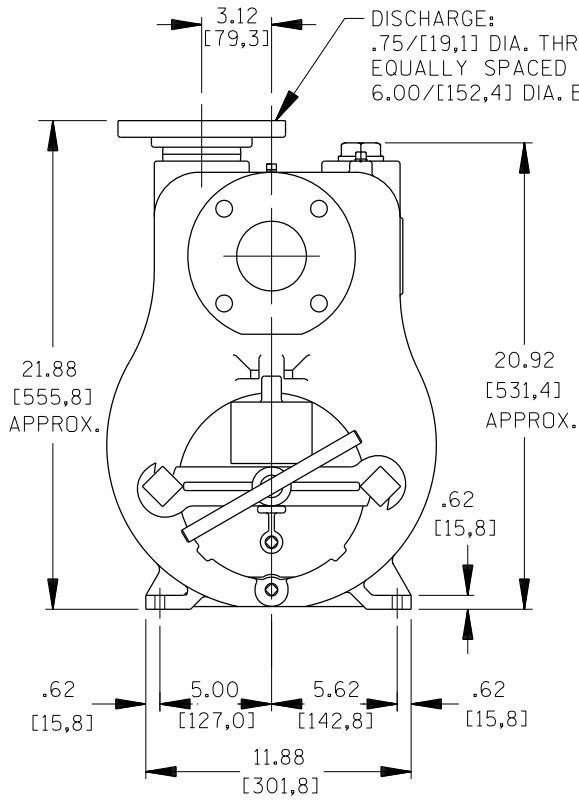


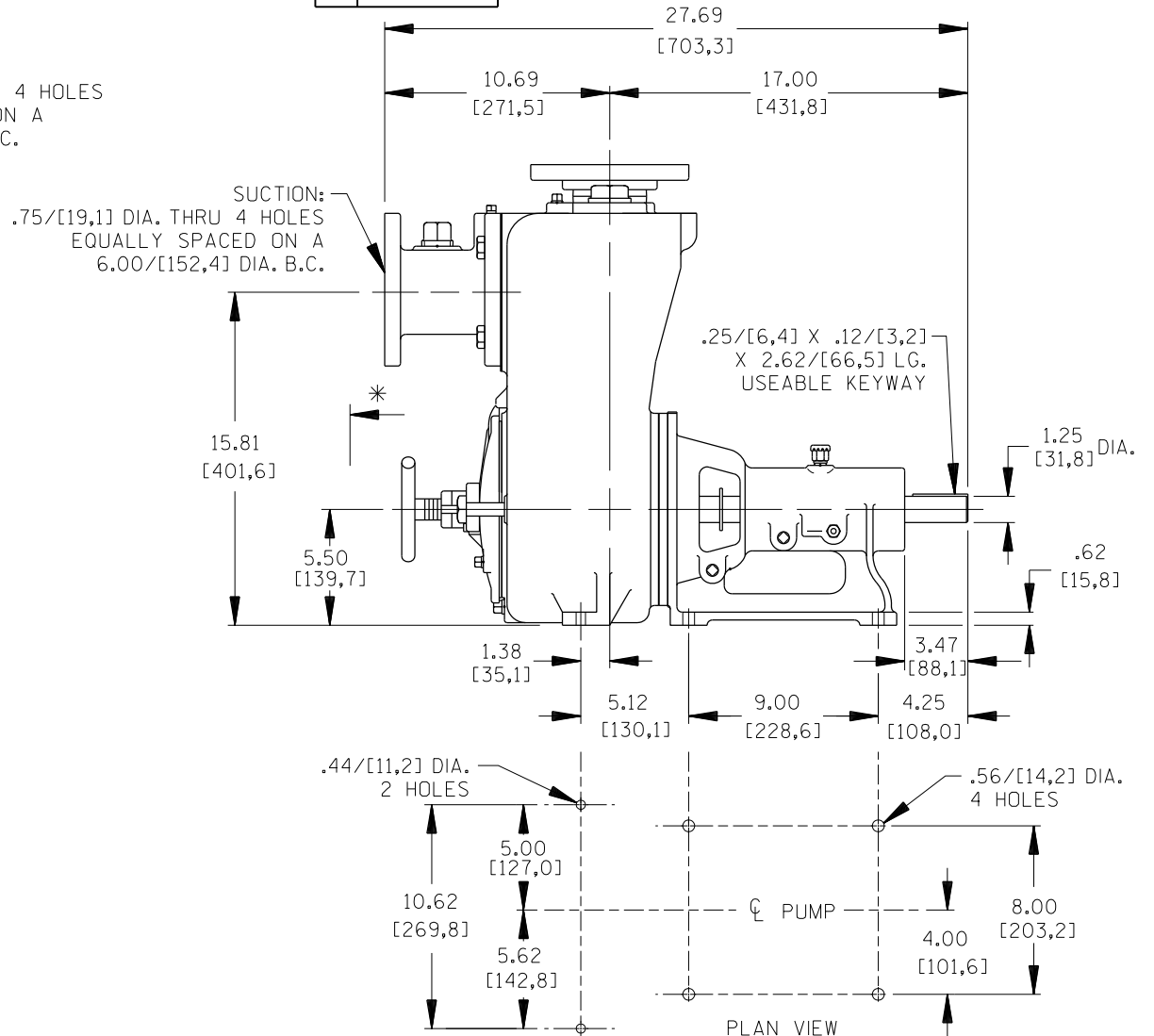
A-12915-A



* 18.00/[457,2] RECOMMENDED FOR
REMOVAL OF BACK COVER PLATE
7.50/[190,5] REQUIRED FOR
REMOVAL OF BACK COVER PLATE

DIMENSIONS:
INCHES
[MILLIMETERS]

B 12915A



00-059

	THE GORMAN-RUPP CO. MANSFIELD, OHIO ST. THOMAS, ONTARIO		DRAWN BY DRB	SCALE $\frac{3}{16}$	MODEL 13C-B
	DATE 2-18-66	REVISED 9-21-00	OUTLINE NUMBER 12915A		