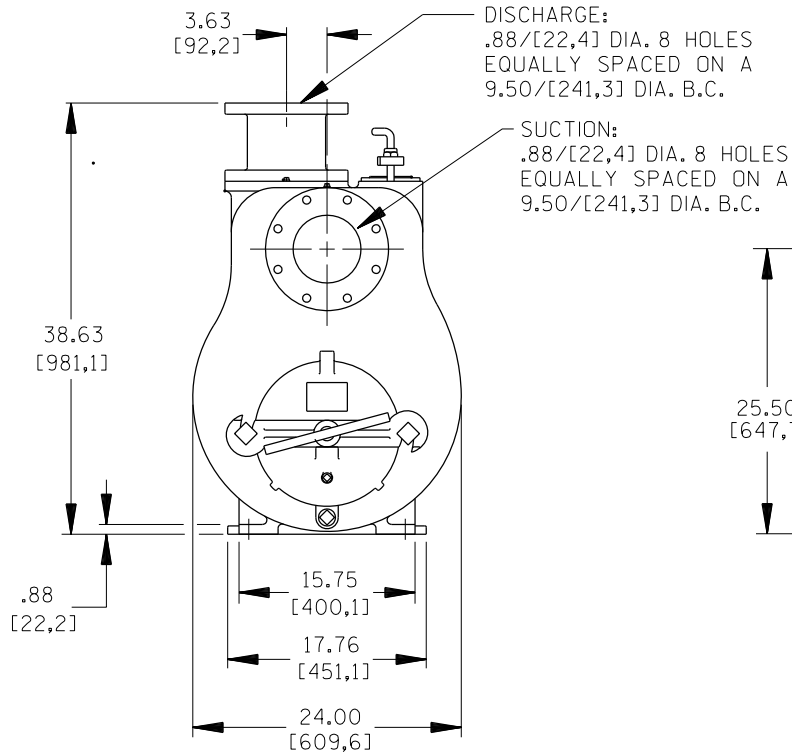
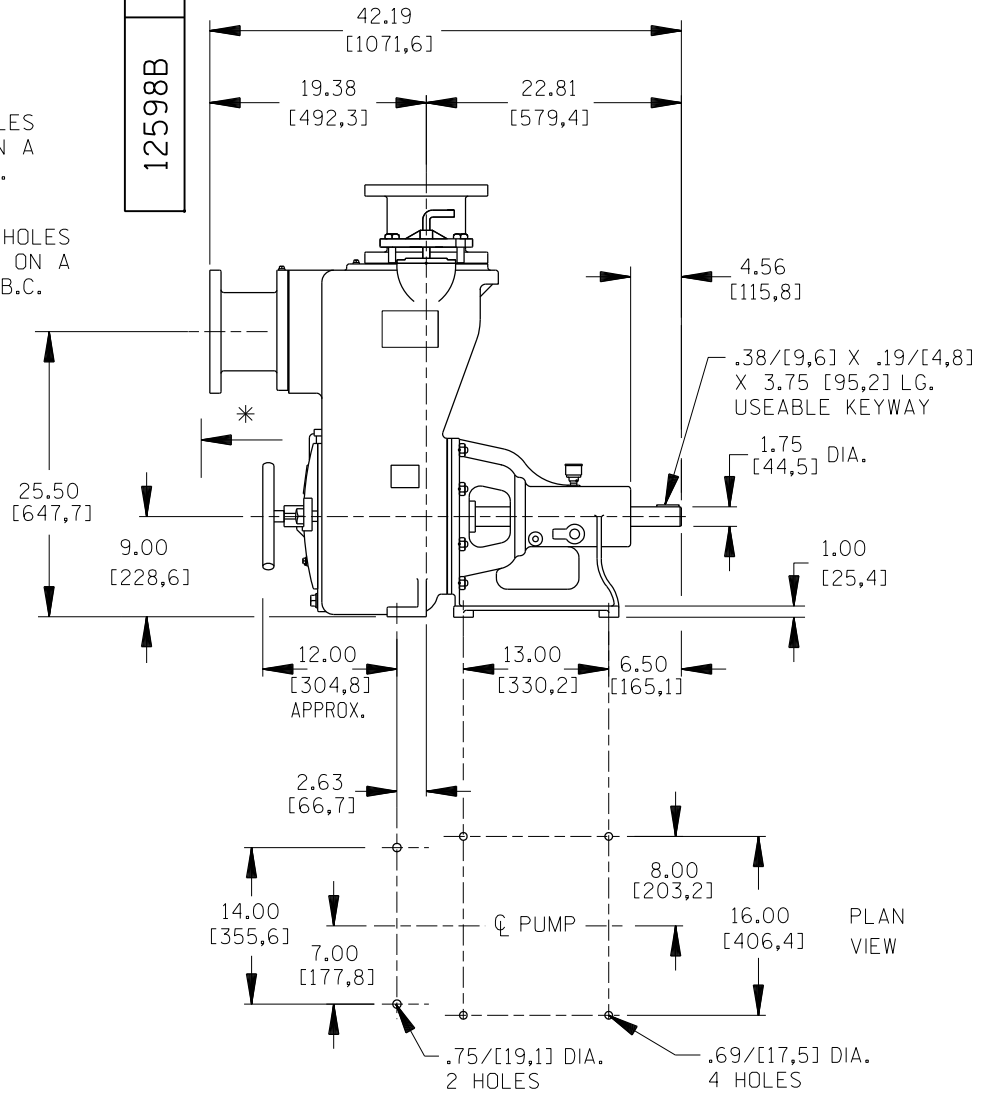


A-12598-B

12598B



\* 18.00/[457,2] RECOMMENDED FOR  
REMOVAL OF BACK COVER PLATE  
10.00/[254,0] REQUIRED FOR  
REMOVAL OF BACK COVER PLATE



DIMENSIONS:  
INCHES  
[MILLIMETERS]

00-059



THE GORMAN-RUPP COMPANY  
MANSFIELD, OHIO USA ST. THOMAS, ONTARIO CANADA

DATE 12-21-65	DWN. BY ML	MODEL 16C-B
REV 9-28-00	SCALE 3/32	OUTLINE No. 12598B