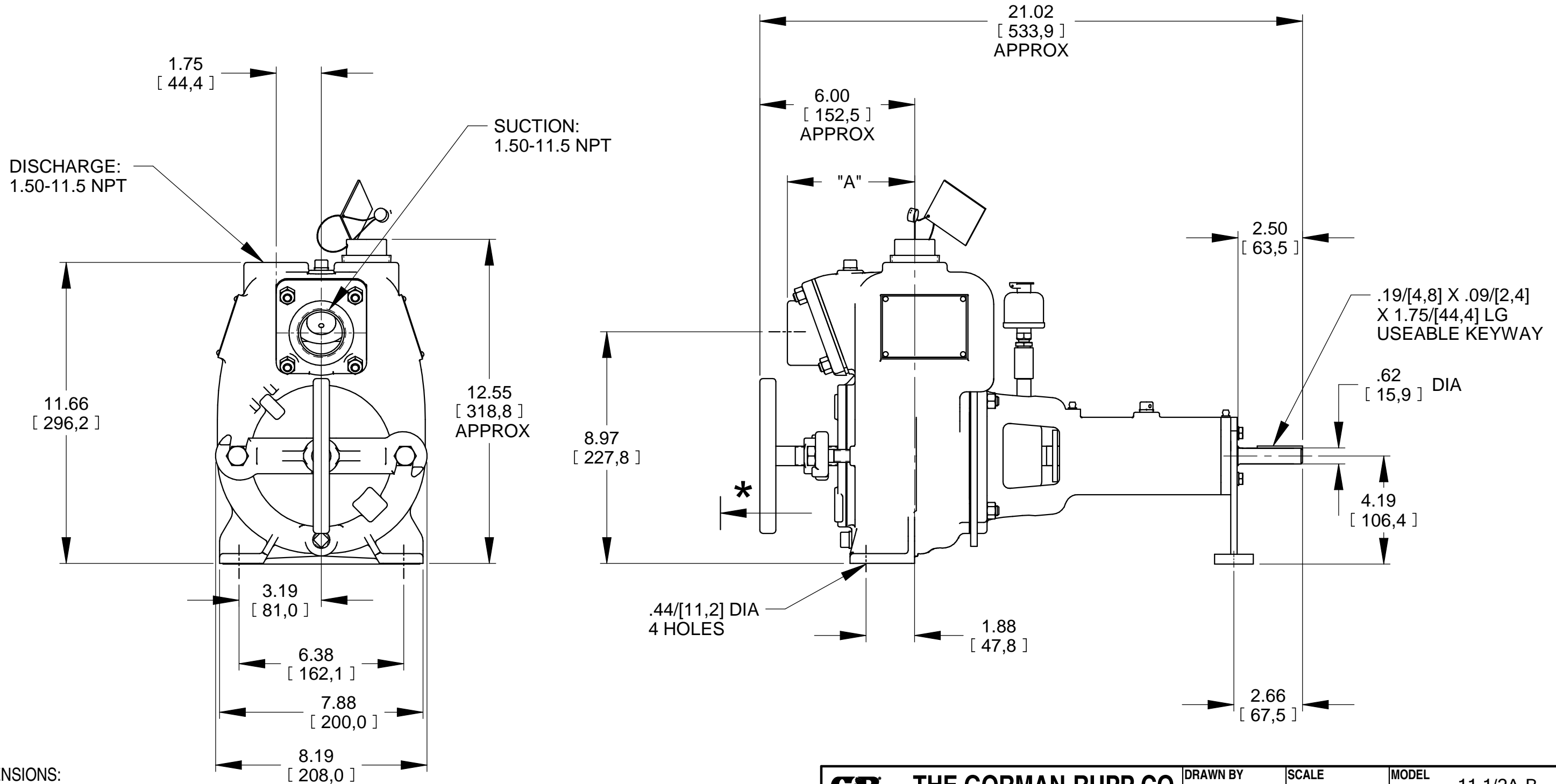


MATL'S OF CONSTRUCTION	DIM "A"
SST	5.06, [128,5]
CAST IRON	4.94, [125,5]
BRONZE	

* 18.00/[457,2] RECOMMENDED FOR REMOVAL OF BACK COVER PLATE
 6.00/[152,4] REQUIRED FOR REMOVAL OF BACK COVER COVER ONLY



DIMENSIONS:
 INCHES
 [MILLIMETERS]

	THE GORMAN-RUPP CO. MANSFIELD, OHIO ST. THOMAS, ONTARIO		DRAWN BY REP	SCALE 1/4	MODEL 11 1/2A-B
	DATE 3-12-65	REVISED 6-12-15	OUTLINE NUMBER 12384		