

Super
U SERIES®



SUPER U SERIES®

Self-Priming, High
Efficiency Pumps

GR
GORMAN-RUPP
PUMPS

The Pump People®

A History Of Innovation

Gorman-Rupp has been revolutionizing the pumping industry since 1933. Many of the innovations introduced by Gorman-Rupp over the years have become industry standards.

More than ever, we continue to update our factories, processes, research and development and engineering to ensure that our pumps and systems are among the most reliable and efficient in the world. One of our most successful and innovative lines of pumps has been our self-priming models.

Revolutionary improvements were made in the 1960s with the introduction of our T Series® self-priming pumps. Since then, continuous improvements to head, flow and efficiency have been made.

In 1981, we introduced our U Series® line of high-efficiency, self-priming pumps. And in 2004, Gorman-Rupp introduced the Super U Series® with added maintenance features to enhance serviceability.

Today, Gorman-Rupp self-priming pumps are the world's leading choice for waste-handling applications in industries such as steel and paper mills, mining operations, food processing plants, power plants, automotive factories, tanneries and wineries. They are also the pump of choice in many sewage-handling applications worldwide.

Gorman-Rupp's commitment to our original philosophy of innovation, continuous improvement, unparalleled quality and customer service continues to set us apart from others.



Increasing Efficiency

The unique volute casing design increases efficiency by minimizing friction loss without sacrificing the benefits of a self-priming pump.

Delivering Decades Of Performance And Value

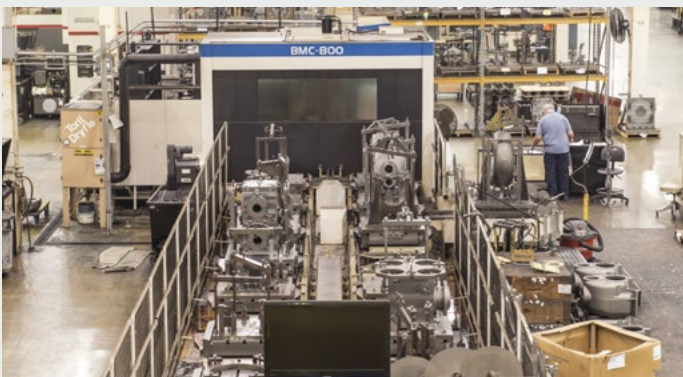
Gorman-Rupp is committed to meeting your fluid-handling requirements long after installation. The quality manufacturing and testing that go into every Super U Series® pump guarantee long-lasting, trouble-free operation. And we provide fast parts service to back up our products and ensure your peace of mind.

Super U Series® pumps boast some of the lowest life cycle costs in the industry. Because of the quality manufacturing and testing that goes into every Gorman-Rupp product, you benefit from minimal service interruptions and some of the lowest

maintenance in the industry. Gorman-Rupp delivers the best ROI by ensuring low operating costs for decades.

When you need a replacement part for your Super U Series pump, you'll have it fast. With tens of thousands of genuine Gorman-Rupp parts and pumps at our disposal, we fill and ship most parts orders within 24 hours. Should your Super U Series pump or ReliaSource® pump package ever require service, our worldwide network of factory-trained distributors is ready to quickly respond to your needs.

**With just one number
to call for parts and
service, it's easy and
convenient to keep your
equipment performing
as it should.**



Gorman-Rupp Super U Series®

The Most Efficient Self-Priming Pumps On The Market



U3B

Shown With
Optional Flanges



U4B

Shown With
Optional Flanges



U6B

Shown With
Optional Flanges

Super U Series pumps are dimensionally interchangeable (suction and discharge dimensions) with Gorman-Rupp's Super T Series® pump models. The removable coverplate with easy-grip handle provides quick and easy access to the pump's interior for service or routine maintenance.

Drive Variations

Gorman-Rupp Super U Series® pumps are available as basic units, ready for connection to power or flex-coupled or v-belt driven by an electric motor.

When space is limited, flex-coupling often solves confined area issues. V-belt driven configurations offer the advantage of flexibility in speed selection and usually provides maximum operating speed for required head and capacity without

needing to trim the impeller. Various belt and sheave options are available.

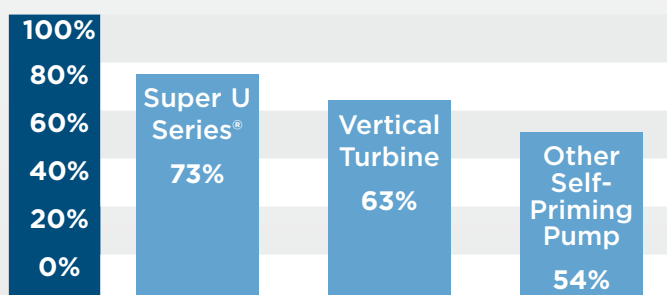
All Super U Series pumps can be coupled to a standard NEMA motor, which means there's no waiting for special motor parts. In addition, Super U Series pumps can be part of a ReliaSource® packaged system.

Up To 73% Efficiency

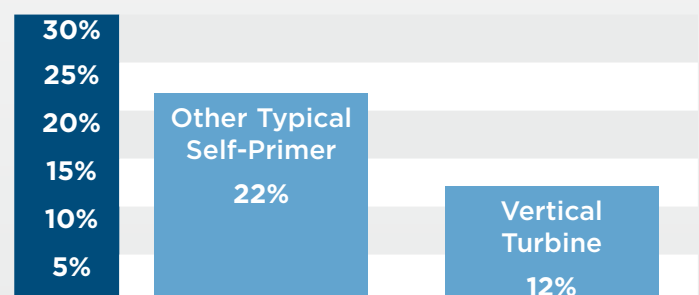
Super U Series® pumps are the most efficient self-priming, solids-handling pumps available. Their unique volute casing design minimizes friction loss and drag. The multi-vane, open impeller is designed for high efficiency, yet can still handle solids up to 1-1/4" (31 mm) in diameter. Super U Series pumps not only deliver high efficiencies (up to 73%), they also perform efficiently across

a broad operating range. Varying loads, which cause a pump to operate left or right of its best efficiency point on the operating curve, will reduce operating efficiency by only a very small percentage. The patented external shimless adjustment makes it easy to keep the pump in peak operating condition.

Efficiency

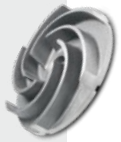


Estimated 5-Year Savings



Economical Operation And Easy To Service

Super U Series® pumps are designed with ease of service in mind. Because they are self-priming they can be mounted above the liquid being pumped. Should service or maintenance be required, it can be easily performed using common hand tools without disconnecting piping. The seal and wearplate can all be accessed through the shimless coverplate opening for inspection or service. Should a clog occur, the easily removable back cover provides quick access to the impeller without resetting the wearplate to impeller clearance for maximized uptime and increased maintenance efficiency.



Multi-Vane Impeller

The multi-vane, open impeller is designed for high efficiency. Constructed of ductile iron, it will handle solids up to 1 1/4" (31 mm) diameter.



Cartridge Seal

Exclusive double-floating, self-aligned, oil lubricated mechanical cartridge seal with stationary and rotating face of silicon carbide is specifically designed for rugged/abrasive service. Consult the factory for additional seal configurations.



Removable Rotating Assembly

Inspection of the pump shaft or bearings is easily accomplished without disturbing the pump casing or piping by removing the rotating assembly. Simply remove four bolts from the back (or front on 6" models) of the pump and the entire assembly slides out.

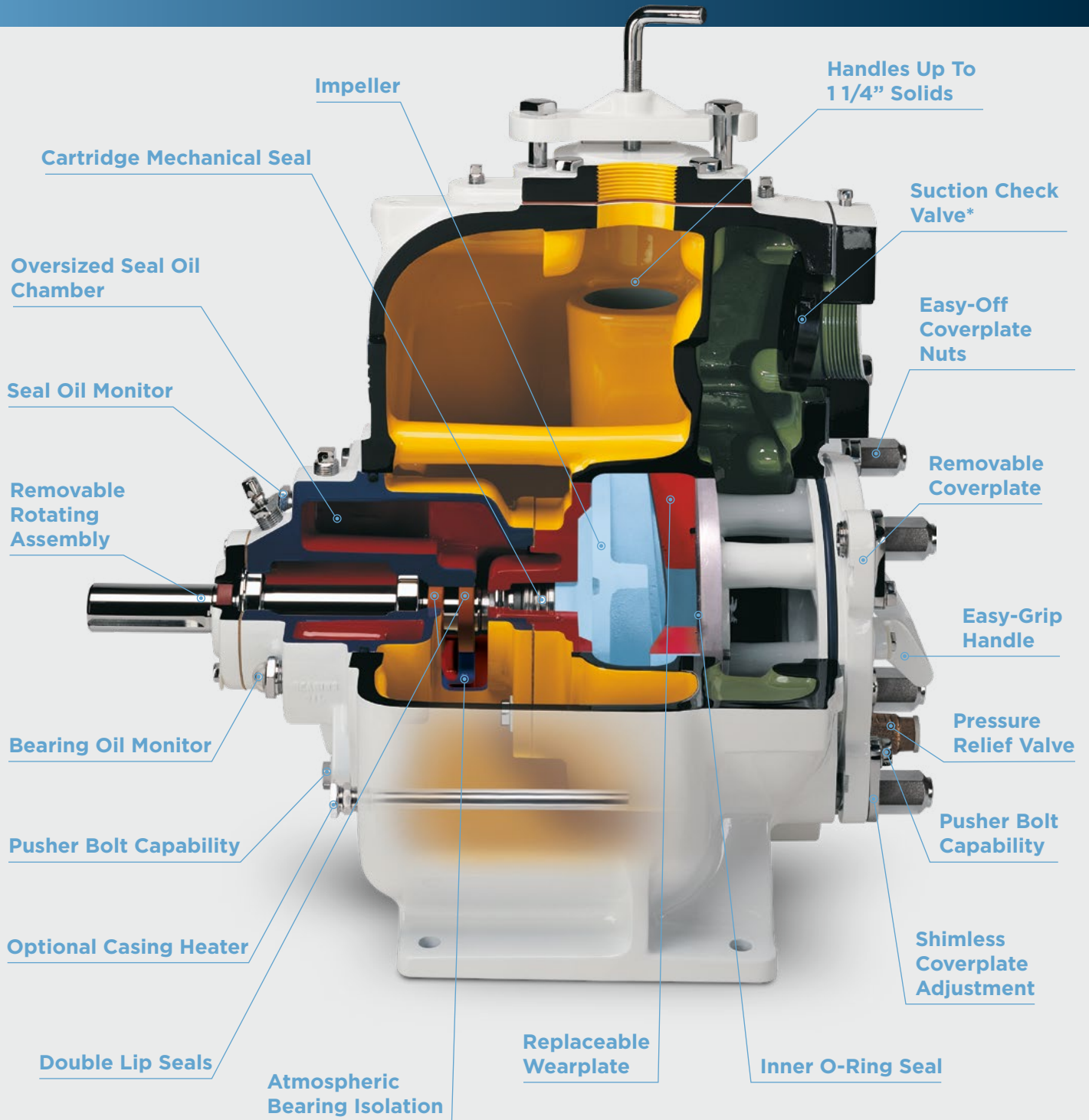


Dual Bearing Protection

Atmospheric isolation of the seal cavity provides positive protection of the bearings. This unique design also allows for external monitoring.

Super U Series® self-priming centrifugal pumps are reliable, efficient and ideal for water reuse stations and a variety of other industrial/municipal applications.





Specifications

Pump Size: 3" (75 mm), 4" (100 mm), 6" (150 mm)

Max Capacity: 1365 GPM (86 lps)

Max Head: 206' (63 m)

Max Solids: 1.25" (32 mm)

Materials of Construction: Cast Iron



Super U Series® pumps come standard with a five-year warranty.

Service And Maintenance Without Disconnecting Piping

Gorman-Rupp's patented external shimless adjustment design doubles the life of the impeller and wearplate.

The external shimless coverplate allows for easy adjustment of the clearance between the impeller and the wearplate. This process eliminates the need to realign belts, couplings or other drive components. In turn, the working height of the seal assembly and impeller back clearance are not disturbed. The unique collar and adjusting screw allow for incremental adjustments of the wearplate clearance with the turn of a hand.

Once adjustments have been made, the collar locks in place, maintaining the clearance setting even if the coverplate is removed. This design feature doubles the life of the impeller and wearplate and keeps the pump operating at maximum efficiency.



Easy To Maintain

Super U Series pumps are designed with ease of service in mind. Because they are self-priming, they can be mounted above the liquid being pumped. Should service or maintenance be required, it can be easily performed using common hand tools without disconnecting piping. With no elongated shafts present, routine service can be performed in confined work spaces.

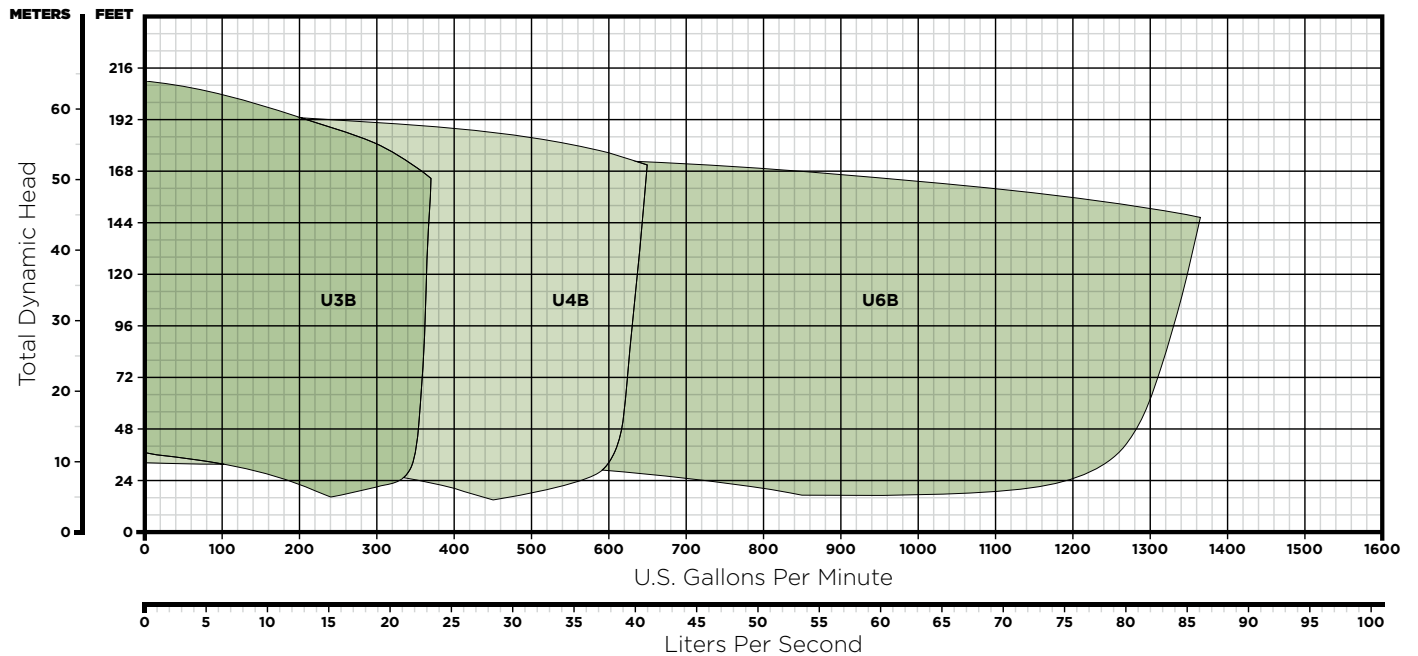


Easily Removable Coverplate

If service is required, the removable coverplate with easy-grip handle and pusher bolt capability provides quick and easy access to the interior of the pump. Should a clog occur, the obstruction can be easily removed and the pump returned to service in minutes. Inspection/service to the impeller, seal and replaceable wearplate can also be accessed through the coverplate opening.



Performance No Other Pump Can Deliver



Operating Ranges

Model	Size (Suc. x Dis.)	Max. Capacity	Max. Head	Max. Solids	Construction
U3B	3" x 3" (75 mm x 75 mm)	370 GPM (23 lps)	206' (63 m)	.81" (21 mm)	Cast Iron
U4B	4" x 4" (100 mm x 100 mm)	650 GPM (41 lps)	195' (59 m)	.81" (21 mm)	Cast Iron
U6B	6" x 6" (150 mm x 150 mm)	1365 GPM (86 lps)	176' (54 m)	1.25" (32 mm)	Cast Iron



Our full line of ReliaSource® above-ground packaged stations is 100% custom engineered and manufactured by Gorman-Rupp. Each station comes pretested and ready for immediate hookup to power and piping.

After Sale Support

Gorman-Rupp products stand the test of time due to our quality manufacturing processes, rigorous product testing and extensive after sale support.

Product Support

Every pump manufactured by Gorman-Rupp is supported with reference information. Pump operation and maintenance manuals (including parts lists), specification data sheets, performance curves and outline drawings in PDF and CAD formats are available on our website or through your distributor for every pump.

Warranty

The warranties on Gorman-Rupp products are some of the best in the industry. Gorman-Rupp has you covered with warranties up to 60 months.

Education & Safety

Gorman-Rupp is committed to remaining at the forefront of the industry with technology and safety. Training videos, demos and

in-person training sessions created for our distributors and end-users help to keep everyone up to date on the latest safety tips and pump maintenance.

Parts

When you need a replacement part, you'll have it fast. Gorman-Rupp is fully committed to keeping your equipment running long after installation and ensuring your pump or lift station continues to meet your requirements year after year. We sell parts through our network of distributors. Find a distributor in your area for assistance.

Service

Should your pump or lift station require service, our worldwide network of factory-trained distributors are ready to quickly respond. Our distributors have the expertise to support you and your pump or lift station long after installation.

Manufacturing Facilities

Gorman-Rupp USA
Mansfield, Ohio, USA

Gorman-Rupp Canada
St. Thomas, Ontario, Canada

Gorman-Rupp Europe
Waardenburg, Netherlands
Namur, Belgium

Gorman-Rupp Africa
Cape Town, South Africa
Durban, South Africa
Johannesburg, South Africa (Headquarters)

Distribution Center

Grand Prairie, Texas, USA

Engineering and manufacturing superiority has been the hallmark of Gorman-Rupp since our inception in 1933. Today we bring our products to life in some of the most efficient, modern and state-of-the-art manufacturing facilities in the world. Gorman-Rupp has a selection of nearly 3,000 pump models, and our world-class team of distributors has worked closely with thousands of end users around the world. We have the proven expertise and the resources to specify, manufacture, test and service your pump, and to ensure reliable performance for the long haul.

GRPUMPS.COM

GORMAN-RUPP PUMPS
P.O. BOX 1217
MANSFIELD, OHIO 44901-1217 | USA
TEL: 419.755.1011 | FAX: 419.755.1251



The Pump People®