



SLUDGEKAT®

Hydraulic-Driven,
Positive Displacement
Sludge Pump



The Pump People®

Gorman-Rupp's SludgeKat®



HSK4A-KDI1903TCR FT4

Hydraulic-Driven, Positive Displacement Sludge Pump

Gorman-Rupp's self-priming, positive displacement, hydraulic piston pump is designed to tackle your toughest pumping applications. For heavy sludges, slurries and other viscous materials, the SludgeKat® offers powerful, reliable pumping where other pumps fail.

The SludgeKat is equipped with 4" (100 mm) suction and discharge ports. This pump is capable of providing flows up to 228 GPM (14 lps) and heads up to 392'

(119 m). The SludgeKat can handle solids up to 2.4" (61 mm) without damage. The anti-clog ball valve design feature is ideal if rags, rocks, bags and bolts present a problem.

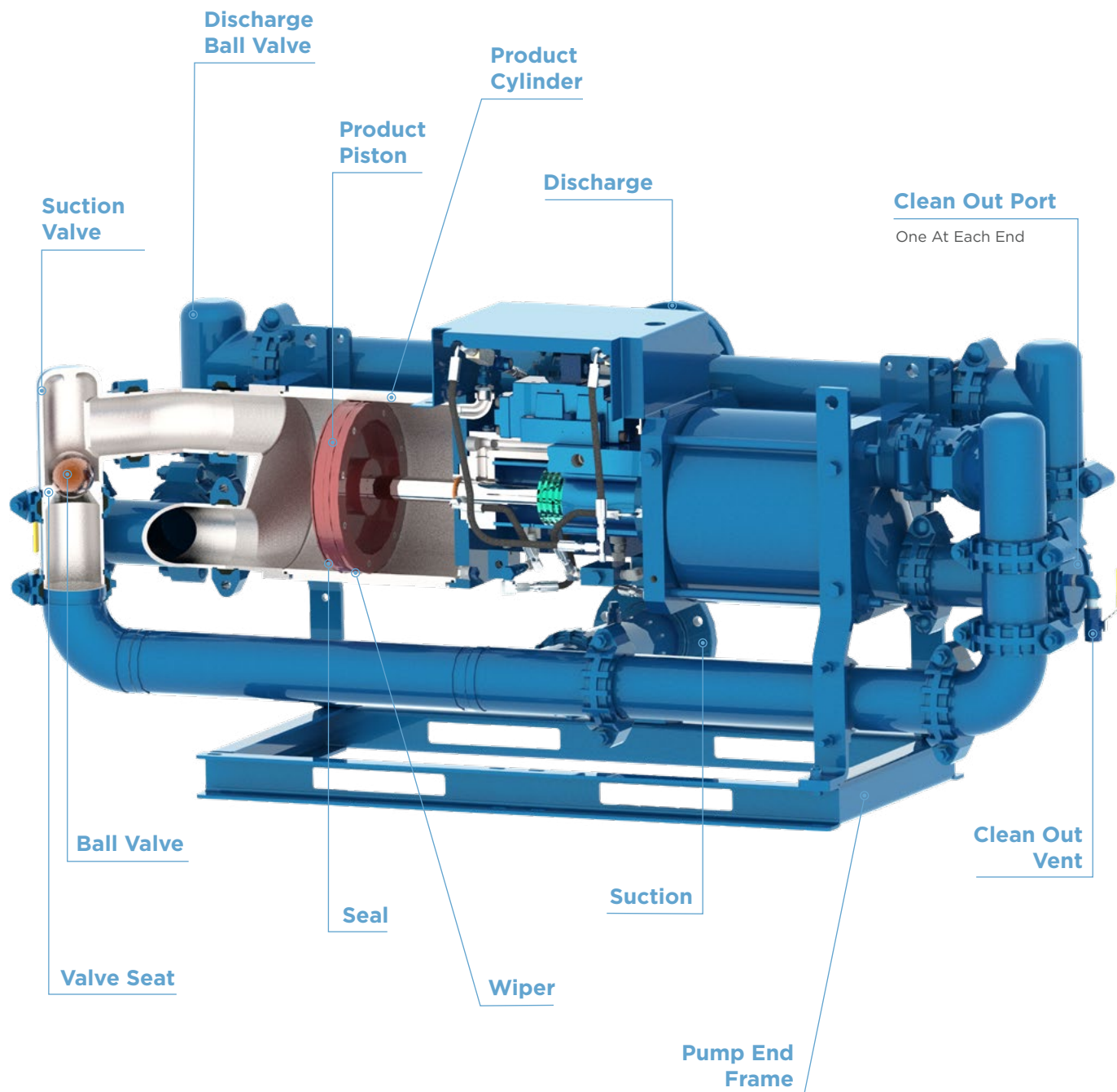
The SludgeKat is available as a complete package mounted to the hydraulic power pack with fuel tank base or as a pump end replacement kit mounted to the pump end frame. Skid-mounted units come standard with wheel kit and the

latest in Tier IV engine-driven technology.

Gorman-Rupp is committed to taking care of your pumping needs long after delivery. The quality manufacturing and testing that goes into every SludgeKat guarantees long-lasting, trouble-free operation. And, we back every part and working component with a one-year/unlimited-hour warranty to keep you moving sludge for the long-haul.

The SludgeKat® comes standard with DOT-approved wheel kit. The pump end frame can be detached from unit and when connected to optional hoses (up to 150' (46 m)), provides increased portability around the job site previously inaccessible by other pumps.





Specifications

Pump Size: 4" (100 mm)

Max Capacity: 228 GPM (14 lps)

Max Head: 392' (119 m)

Max Solids: 2.4" (61 mm)

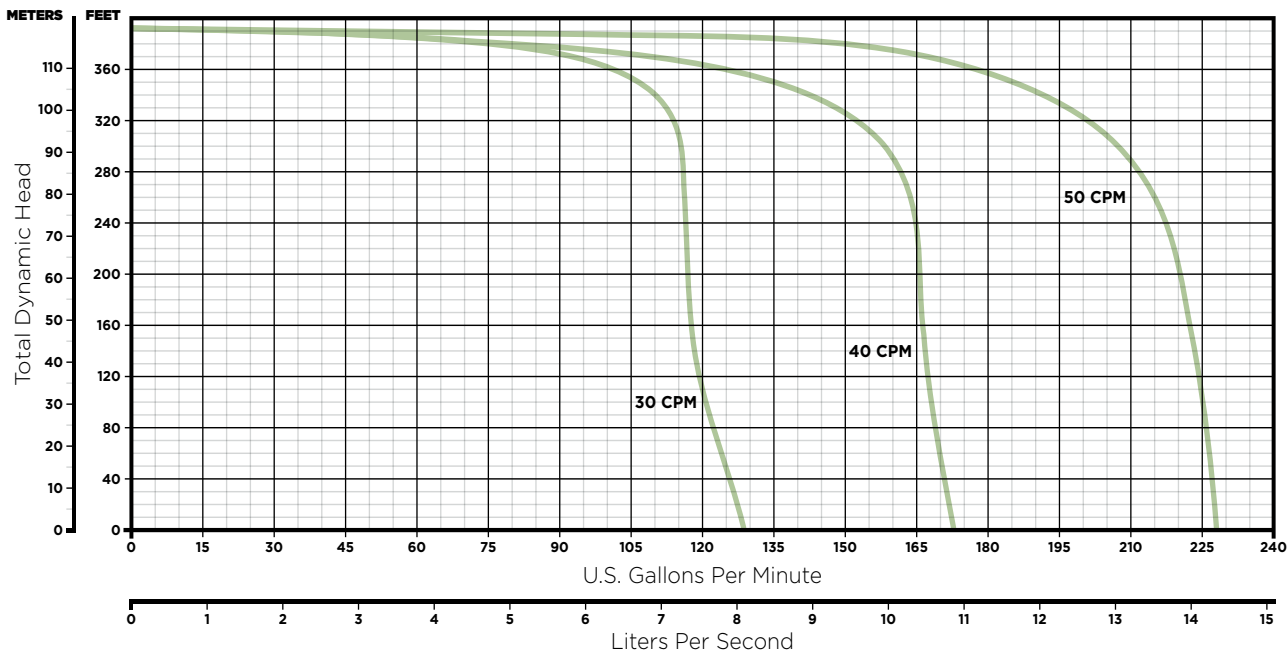
Materials of Construction: Cast Iron, Ductile Iron, Steel (Hardened Chromed Product Cylinder)



All SludgeKat® pumps come standard with a one-year warranty.

Pumps Designed To Handle The Toughest Jobs

SludgeKat®: 4" Model



Operating Ranges

Model	Size (Dis.)	Max. Capacity	Max. Head	Max. Hydraulic Pressure	Max. Solids
HSK4A	4" (100 mm)	228 GPM (14 lps)	392' (119 m)	2000 PSI (138 bar)	2" (61 mm)

Gorman-Rupp SludgeKat® pump models are driven by a Kohler KDI1903TCR Tier IV 48 HP engine. The fuel tank can hold up to 52 gal. (197 L). Consult Gorman-Rupp factory for product availability.

Pumps For A Variety Of Applications

Gorman-Rupp SludgeKat® pumps will be found operating in the most hostile environments.

Environmental Clean-up



Tank Cleaning

Wastewater Treatment

Clarifying Pits

Fly Ash Disposal



Pulp & Paper

Food Processing

Cement Plants



Mud Pump Applications

Loading & Unloading Rail Cars

Frac Tank Farms

Oil & Gas Drilling

Agriculture



After Sale Support

Gorman-Rupp products stand the test of time due to our quality manufacturing processes, rigorous product testing and extensive after sale support.

Product Support

Every pump manufactured by Gorman-Rupp is supported with reference information. Pump operation and maintenance manuals (including parts lists), specification data sheets, performance curves and outline drawings in PDF and CAD formats are available on our website or through your distributor for every pump.

Warranty

The warranties on Gorman-Rupp products are some of the best in the industry. Gorman-Rupp has you covered with warranties up to 60 months.

Education & Safety

Gorman-Rupp is committed to remaining at the forefront of the industry with technology and safety. Training videos, demos and

in-person training sessions created for our distributors and end-users help to keep everyone up to date on the latest safety tips and pump maintenance.

Parts

When you need a replacement part, you'll have it fast. Gorman-Rupp is fully committed to keeping your equipment running long after installation and ensuring your pump or lift station continues to meet your requirements year after year. We sell parts through our network of distributors. Find a distributor in your area for assistance.

Service

Should your pump or lift station require service, our worldwide network of factory-trained distributors are ready to quickly respond. Our distributors have the expertise to support you and your pump or lift station long after installation.

Manufacturing Facilities

Gorman-Rupp USA
Mansfield, Ohio, USA

Gorman-Rupp Canada
St. Thomas, Ontario, Canada

Gorman-Rupp Europe
Waaardenburg, Netherlands
Namur, Belgium

Gorman-Rupp Africa
Cape Town, South Africa
Durban, South Africa
Johannesburg, South Africa (Headquarters)

Distribution Center

Grand Prairie, Texas, USA

Engineering and manufacturing superiority has been the hallmark of Gorman-Rupp since our inception in 1933. Today we bring our products to life in some of the most efficient, modern and state-of-the-art manufacturing facilities in the world. Gorman-Rupp has a selection of nearly 3,000 pump models, and our world-class team of distributors has worked closely with thousands of end users around the world. We have the proven expertise and the resources to specify, manufacture, test and service your pump, and to ensure reliable performance for the long haul.

GRPUMPS.COM

GORMAN-RUPP PUMPS
P.O. BOX 1217
MANSFIELD, OHIO 44901-1217 | USA
TEL: 419.755.1011 | FAX: 419.755.1251



The Pump People®