



6500 SERIES®

Standard Horizontal
End Suction
Centrifugal Pumps



The Pump People®



A History Of Innovation

Gorman-Rupp has been revolutionizing the pumping industry since 1933. Many of the innovations introduced by Gorman-Rupp over the years have become industry standards.

More than ever, we continue to update our factories, processes, research and development and engineering to ensure that our pumps and systems are among the most reliable and efficient in the world. One of our most successful and innovative lines of pumps has been our self-priming models.

Revolutionary improvements were made in the 1960s with the introduction of our T Series® self-priming pumps. Since then, continuous improvements to head, flow and efficiency have been made.

6500 Series standard horizontal end suction centrifugal pumps are designed for clean liquids or liquids containing large solids. These pumps are ideal for a variety of industrial, construction, mining, agricultural and wastewater treatment applications.

Gorman-Rupp's commitment to our original philosophy of innovation, continuous improvement, unparalleled quality and customer service continues to set us apart from others.

Proven Technology

Based on the proven technology of Gorman-Rupp's Prime Aire® and Prime Aire Plus® priming-assisted pump models, 6500 Series® pumps are designed to serve applications where a suction lift is not required.



Delivering Decades Of Performance And Value

Gorman-Rupp is committed to meeting your fluid-handling requirements long after installation. The quality manufacturing and testing that go into every 6500 Series® pump guarantee long-lasting, trouble-free operation. And we provide fast parts service to back up our products and ensure your peace of mind.

6500 Series® pumps boast some of the lowest life cycle costs in the industry. Because of the quality manufacturing and testing that goes into every Gorman-Rupp product, you benefit from minimal service interruptions and some of the lowest

maintenance in the industry. Gorman-Rupp delivers the best ROI by ensuring low operating costs for decades.

When you need a replacement part for your 6500 Series pump, you'll have it fast. With tens of thousands of genuine Gorman-Rupp parts and pumps at our disposal, we fill and ship most parts orders within 24 hours. Should your pump ever require service, our worldwide network of factory-trained distributors is ready to quickly respond to your needs.

**With just one number
to call for parts and
service, it's easy and
convenient to keep your
equipment performing
as it should.**



Gorman-Rupp 6500 Series®

The Right Pump For The Job



Superior Performance

The simple design of 6500 Series® pumps allows for greater efficiencies in operation over self-priming alternatives in flooded suction installations. Additionally, they are available optimized

for clean liquid or solids-handling applications. Solids-handling models include an innovative side access inspection/clean-out port and offer higher heads and flows when required.

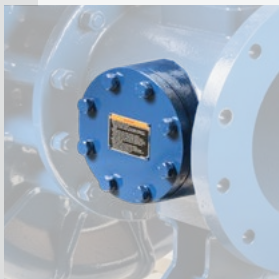




Top Of The Line Features



2a



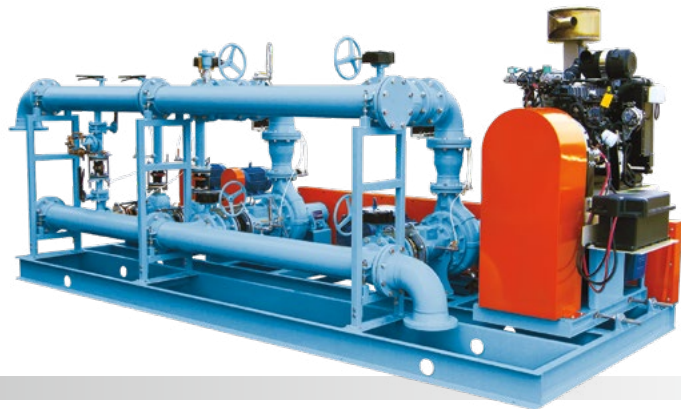
2b

- Alloy steel shafts with stainless steel options
- Dual sight gauges for bearing and seal cavities
- Smart Scroll® discharge locator **(2a)** can be rotated to fit your specific piping system. It can be ordered in a variety of discharge positions which offers increased flexibility in pump installation.
- Atmospheric vent
- Oversized bearings for longer bearing life
- Double volute, on larger models, mitigates shaft breakage and extends the life of the mechanical seals, wear rings and bearings, all while maintaining hydraulic efficiency.
- Solids-handling models include side access **(2b)** for inspection and clean out without disconnecting piping while the pusher bolt capability assists in the removal of the suction flange.

Configured To Suit Your Pumping Requirements



6500 Series®
Flex-coupled



6500 Series®
ReliaSource® Packaged
Pumping Station

Applicable Markets and Applications

Gorman-Rupp has an experienced staff of engineers dedicated to the design and construction of the most efficient and serviceable pumps in the industry. Our representatives are trained to help you select the proper pumps and related equipment for your specific application. They are also available to offer suggestions on maintaining your equipment for maximum performance.



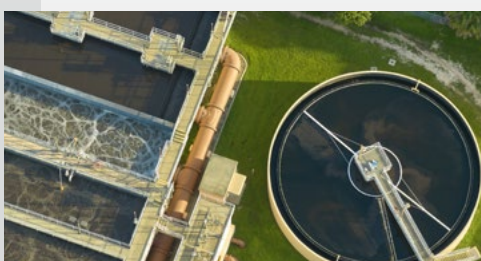
Agricultural

- Golf Course and Crop Irrigation Systems
- Manure Slurry and Pit
- Agricultural Waste
- Food Farming



Construction and Mining

- Wash Plants
- Tire Washing
- Dust Control



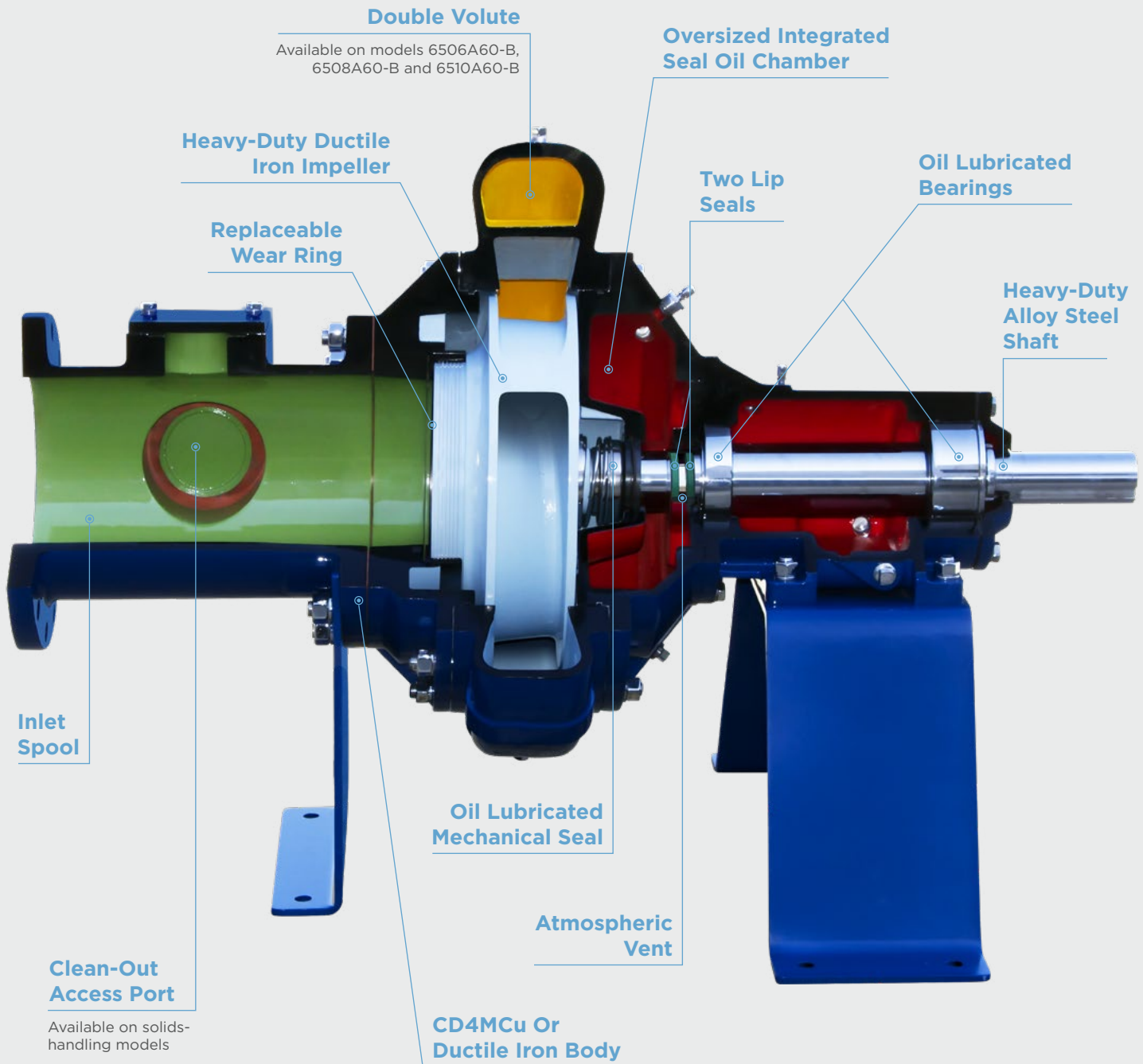
Wastewater Treatment

- Influent Equalization
- Primary Sludge
- RAS
- WAS
- Utility Water (Non-Portable)
- Effluent
- Scum
- Supernatant Recirculation
- Dewatering Feed
- Sludge Loading

Industrial

- General Water Service
- Chilled and Hot Water Systems
- Cooling Tower Recirculation
- Food Processing
- HVAC
- Industrial Processes
- Industrial Wastewater
- Water Transfer

The Right Pump For The Job



Specifications

Pump Size: 3" (75 mm), 4" (100 mm), 6" (150 mm), 8" (200 mm), 10" (250 mm), 12" (300 mm), 14" (350 mm), 16" (400 mm)

Max Capacity: 15400 GPM (972 lps)

Max Head: 530' (162 m)

Max Solids: 4" (102 mm)

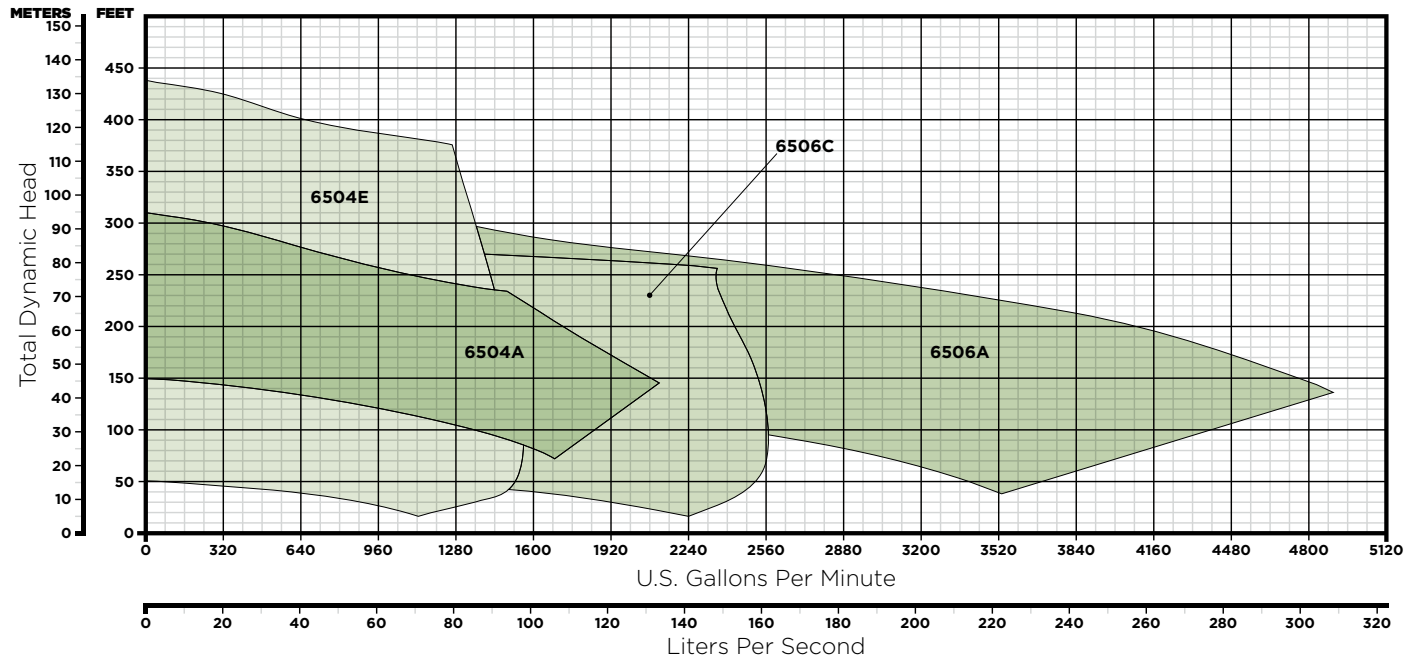
Materials of Construction: CD4MCu, Ductile Iron



All 6500 Series® pumps come standard with a five-year warranty.

High Performance, Long-Lasting Solids-Handling Trash Pumps

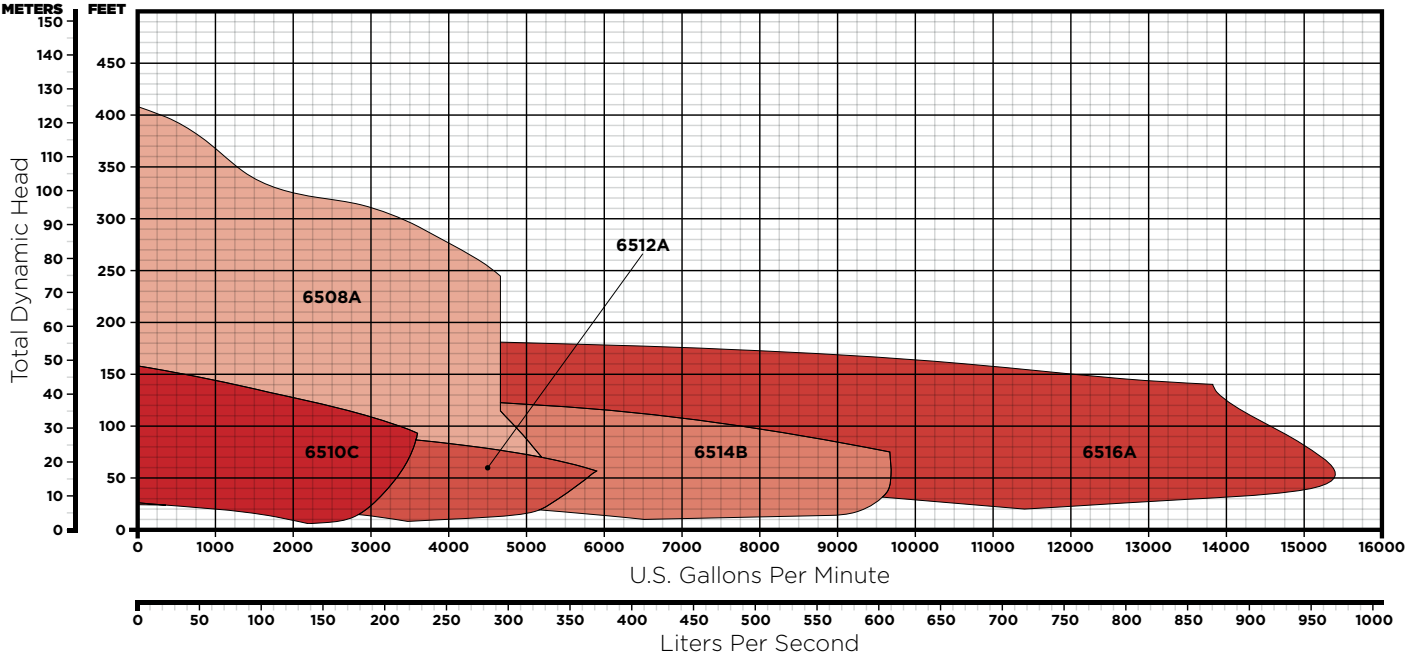
4" - 6" - Solids-Handling



Operating Ranges

Model	Size (Suc. x Dis.)	Max. Capacity	Max. Head	Max. Solids	Construction
6504A	6" x 4" (150 mm x 100 mm)	2120 GPM (134 lps)	292' (89 m)	3" (76 mm)	CD4MCu, Ductile Iron
6504E	6" x 4" (150 mm x 100 mm)	1562 GPM (99 lps)	416' (127 m)	3" (76 mm)	Ductile Iron
6506A	10" x 6" (250 mm x 150 mm)	4900 GPM (309 lps)	316' (96 m)	3" (76 mm)	CD4MCu, Ductile Iron
6506C	8" x 6" (200 mm x 150 mm)	2570 GPM (162 lps)	314' (96 m)	3" (76 mm)	Ductile Iron

8" - 16" - Solids-Handling

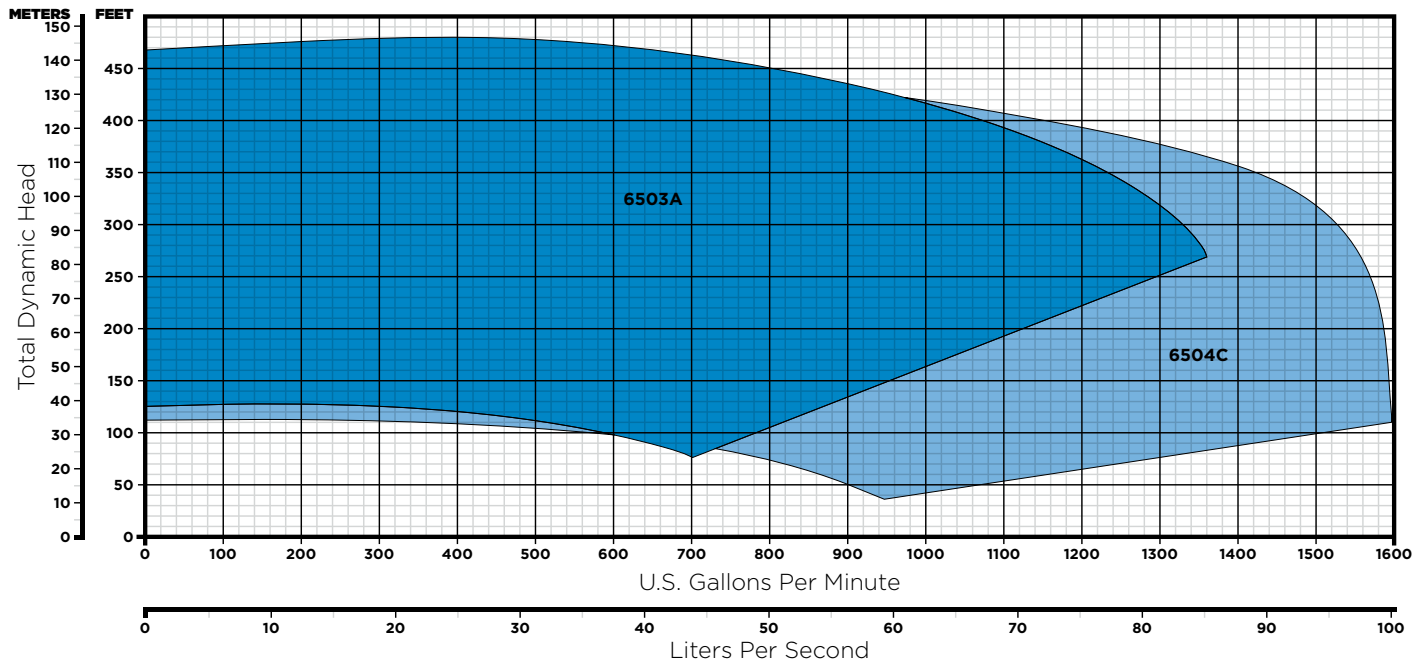


Operating Ranges

Model	Size (Suc. x Dis.)	Max. Capacity	Max. Head	Max. Solids	Construction
6508A	10" × 8" (250 mm × 200 mm)	5200 GPM (328 lps)	358' (109 m)	3" (76 mm)	CD4MCu, Ductile Iron
6510C	10" × 10" (250 mm × 250 mm)	3600 GPM (227 lps)	136' (42 m)	3.25" (83 mm)	Ductile Iron
6512A	12" × 12" (300 mm × 300 mm)	5900 GPM (372 lps)	92' (28 m)	3" (76 mm)	Ductile Iron
6514B	14" × 14" (350 mm × 350 mm)	9700 GPM (612 lps)	140' (43 m)	3.5" (89 mm)	Ductile Iron
6516A	18" × 16" (450 mm × 400 mm)	15400 GPM (972 lps)	180' (55 m)	4" (102 mm)	Ductile Iron

Pumps That Deliver Decades Of Performance And Value

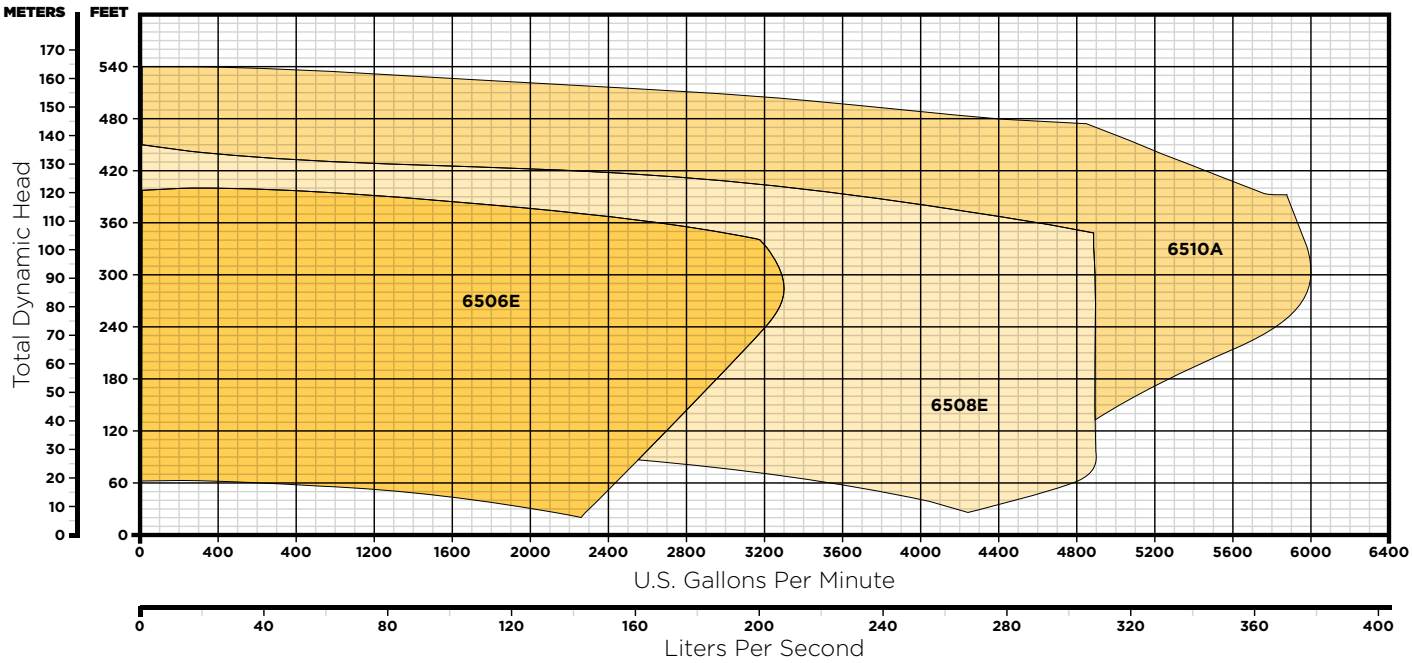
3" - 4" - Clean Liquids-Handling



Operating Ranges

Model	Size (Suc. x Dis.)	Max. Capacity	Max. Head	Max. Solids	Construction
6503A	6" x 3" (150 mm x 75 mm)	1360 GPM (86 lps)	480' (146 m)	.5" (13 mm)	Ductile Iron
6504C	6" x 4" (150 mm x 100 mm)	1600 GPM (101 lps)	452' (138 m)	.5" (13 mm)	Ductile Iron

6" - 10" - Clean Liquids-Handling



Operating Ranges

Model	Size (Suc. x Dis.)	Max. Capacity	Max. Head	Max. Solids	Construction
6506E	8" × 6" (200 mm × 150 mm)	3300 GPM (208 lps)	400' (122 m)	1.25" (32 mm)	Ductile Iron
6508E	10" × 8" (250 mm × 200 mm)	4900 GPM (309 lps)	424' (129 m)	1.75" (44 mm)	Ductile Iron
6510A	12" × 10" (300 mm × 250 mm)	6000 GPM (379 lps)	530' (162 m)	2" (51 mm)	Ductile Iron

After Sale Support

Gorman-Rupp products stand the test of time due to our quality manufacturing processes, rigorous product testing and extensive after sale support.

Product Support

Every pump manufactured by Gorman-Rupp is supported with reference information. Pump operation and maintenance manuals (including parts lists), specification data sheets, performance curves and outline drawings in PDF and CAD formats are available on our website or through your distributor for every pump.

Warranty

The warranties on Gorman-Rupp products are some of the best in the industry. Gorman-Rupp has you covered with warranties up to 60 months.

Education & Safety

Gorman-Rupp is committed to remaining at the forefront of the industry with technology and safety. Training videos, demos and

in-person training sessions created for our distributors and end-users help to keep everyone up to date on the latest safety tips and pump maintenance.

Parts

When you need a replacement part, you'll have it fast. Gorman-Rupp is fully committed to keeping your equipment running long after installation and ensuring your pump or lift station continues to meet your requirements year after year. We sell parts through our network of distributors. Find a distributor in your area for assistance.

Service

Should your pump or lift station require service, our worldwide network of factory-trained distributors are ready to quickly respond. Our distributors have the expertise to support you and your pump or lift station long after installation.

Manufacturing Facilities

Gorman-Rupp USA
Mansfield, Ohio, USA

Gorman-Rupp Canada
St. Thomas, Ontario, Canada

Gorman-Rupp Europe
Waardenburg, Netherlands
Namur, Belgium

Gorman-Rupp Africa
Cape Town, South Africa
Durban, South Africa
Johannesburg, South Africa (Headquarters)

Distribution Center

Grand Prairie, Texas, USA

Engineering and manufacturing superiority has been the hallmark of Gorman-Rupp since our inception in 1933. Today we bring our products to life in some of the most efficient, modern and state-of-the-art manufacturing facilities in the world. Gorman-Rupp has a selection of nearly 3,000 pump models, and our world-class team of distributors has worked closely with thousands of end users around the world. We have the proven expertise and the resources to specify, manufacture, test and service your pump, and to ensure reliable performance for the long haul.

GRPUMPS.COM

GORMAN-RUPP PUMPS
P.O. BOX 1217
MANSFIELD, OHIO 44901-1217 | USA
TEL: 419.755.1011 | FAX: 419.755.1251



The Pump People®