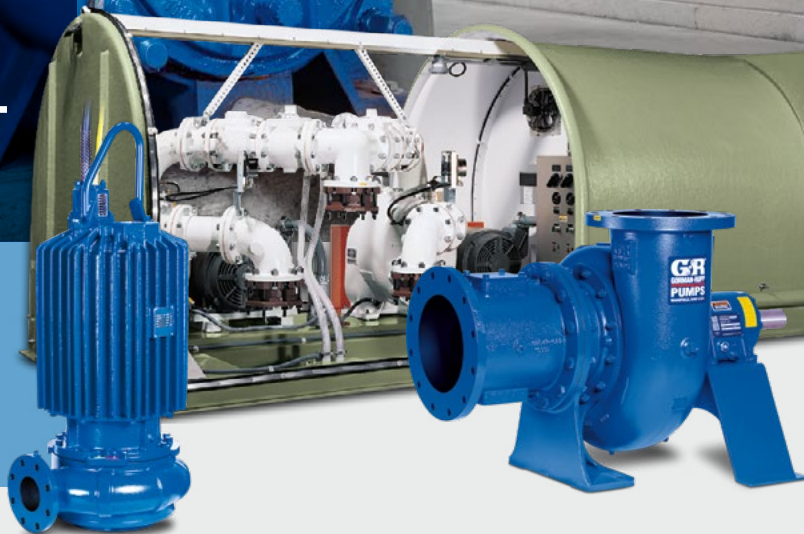




WASTEWATER TREATMENT PLANT APPLICATIONS

Solutions For All Your
Treatment System's
Pumping Needs



GR
GORMAN-RUPP
PUMPS

The Pump People®



A History Of Solving Wastewater Challenges

Gorman-Rupp has been revolutionizing the pumping industry since 1933. Many of the innovations introduced by Gorman-Rupp over the years have become industry standards.

Gorman-Rupp developed its first self-priming centrifugal pump to provide our customers with a durable, reliable pump that could perform in a demanding environment. Since then, we've worked closely with our customers around the world to meet their wastewater treatment needs.

With over one million Gorman-Rupp pumps and pump stations installed to date, we have the experience to intimately understand municipal pumping requirements. Our worldwide network of distributors has experienced industry professionals on staff, giving us firsthand knowledge of your most difficult applications.

We help you solve these challenges and make the most of your limited resources by designing our pumps, and stations, to deliver decades of trouble-free unattended performance.

When you choose Gorman-Rupp for your municipal pumping applications, you'll experience some of the lowest life cycle costs in the industry and benefit from minimal service interruptions. And you'll enjoy one of the highest customer satisfaction ratings in the industry—guaranteed.

A History of Innovation

Gorman-Rupp engineers a full line of lift stations, which are 100% Gorman-Rupp custom engineered and manufactured. The stations come pretested and ready for immediate hookup to power and piping.



State-of-the-Art Equipment And Facilities

As the world's leading manufacturer of pumps and pumping systems, Gorman-Rupp offers you access to one of the largest and highest quality lines of municipal pumps, engine-driven pumps, lift stations and water booster/reuse stations.

We maintain nearly one million square feet of the most modern manufacturing, testing and warehousing facilities in the world. Our experienced engineers take advantage of the latest technologies and innovations to custom-design, manufacture and assemble our products.

We perform rigorous testing based on

Hydraulic Institute standards and test to customers' actual operating conditions in our state-of-the-art testing facility guaranteeing innovative, superior-quality products that are ready to tackle your toughest jobs.

To ensure you get the right equipment for your requirements, Gorman-Rupp partners with a worldwide network of distribution and provides them with the best and most extensive training. Gorman-Rupp distributors will work hand-in-hand with you to recommend, customize and specify equipment. And they are always available should you ever require service assistance.

With just one number to call for parts and service, it's easy and convenient to keep your equipment performing as it should.



Gorman-Rupp Pumps:

The Longest Lasting In The Business



Self-Priming Centrifugal Pumps

Gorman-Rupp self-priming centrifugal pumps are easy to install and service. Because they're self-priming, they can be mounted high and dry at floor level, with only the suction line down in the liquid. If service or maintenance is required, it can be completed quickly and easily. There are no long drive shafts to install and align. And, there is never any need for service personnel to enter the sump. Pumps are available as basic units for connection to your power source or may be flex-coupled, v-belt driven or engine mounted.

A Ultra V Series®

Size: 3" (75 mm) to 6" (150 mm)
Max Capacity: 1904 GPM (120 lps)
Max Head: 168' (51 m)
Max Solids: 3" (76 mm)

B Ultra V Series® with UltraMate®

Size: 3" (75 mm) to 6" (150 mm)
Max Capacity: 1904 GPM (120 lps)
Max Head: 325' (99 m)
Max Solids: 3" (76 mm)

C Super T Series®

Size: 2" (50 mm) to 10" (250 mm)
Max Capacity: 3400 GPM (215 lps)
Max Head: 168' (51 m)
Max Solids: 3" (76 mm)

Setting the Standard

For applications dealing with flushable wipes, rags, sludge or any other clog-prone material, the Eradicator® Solids Management System is available for all sizes of Gorman-Rupp Super T Series® and Ultra V Series® pumps. For the most aggressive applications and more effective solids management, 3", 4" and 6" Super T Series models are available with Eradicator Plus technology when the cutting and tearing of organic solids is required.





D



E



F

D

80 Series®

Size: 1.25" (32 mm) to 6" (150 mm)
Max Capacity: 1860 GPM (117 lps)
Max Head: 205' (63 m)
Max Solids: 1.9" (49 mm)

E

10 Series®

Size: 1.5" (38 mm) to 12" (300 mm)
Max Capacity: 6700 GPM (423 lps)
Max Head: 130' (40 m)
Max Solids: 3" (76 mm)

F

Super U Series®

Size: 3" (75 mm) to 6" (150 mm)
Max Capacity: 1500 GPM (95 lps)
Max Head: 207' (63 m)
Max Solids: 1.25" (32 mm)

When paired with a variety of Gorman-Rupp pumps and pump packages, the Ech₂oStorm® venturi aeration system adds dissolved oxygen into a variety of municipal and wastewater treatment liquids.



Gorman-Rupp Pumps:

Setting The Industry Standard

Submersible Pumps

Gorman-Rupp submersible pumps are designed for efficient operation in both dewatering and solids-handling applications, while remaining out-of-sight, beneath the fluid's surface. Models are available with electric motors rated for standard and hazardous locations.



SF Series®

Solids-handling

Size: 3" (75 mm) to 8" (200 mm)

Max Capacity: 3400 GPM (215 lps)

Max Head: 172' (52 m)

Max Solids: 3" (76 mm)

Horsepower: 3 HP (2 kW) to 75 HP (56 kW)



Self-Priming Positive Displacement Pump

Gorman-Rupp's self-priming, positive displacement, hydraulic piston pump is designed to tackle your toughest pumping requirements. For applications involving heavy sludges, slurries and other viscous materials, the SludgeKat® offers powerful, reliable pumping where other pumps fail.



SludgeKat®

Hydraulic Driven

Size: 4" (100 mm)
Max Capacity: 226 GPM (14 lps)
Max Head: 390' (119 m)
Max Solids: 2.4" (61 mm)

Standard And Horizontal End Suction Centrifugal Pumps

Gorman-Rupp offers hundreds of models of high volume, high pressure centrifugal pumps. These more efficient pumps have few moving parts, so maintenance and service are minimal.

Standard Centrifugal



VG Series & VGH Series

Size: 1.25" (30 mm) to 8" (200 mm)
Max Capacity: 4900 GPM (309 lps)
Max Head: 500' (152 m)
Max Solids: 1.38" (35 mm)

End Suction Centrifugal



6400 Series™

Size: 2" (50 mm) to 6" (150 mm)
Max Capacity: 2160 GPM (136 lps)
Max Head: 170' (52 m)
Max Solids: 4" (102 mm)



6500 Series®

Size: 3" (75 mm) to 16" (400 mm)
Max Capacity: 15400 GPM (972 lps)
Max Head: 530' (162 m)
Max Solids: 4" (102 mm)

ReliaSource®—The Municipal Market's Most Reliable Packaged Stations

Gorman-Rupp has been manufacturing quality lift systems for over 55 years. Our full line of complete above-ground stations is 100% custom engineered and manufactured by Gorman-Rupp. All our packages offer an extensive line of pumps, motors, controls, valves and accessories and are housed in durable fiberglass enclosures. Each station comes pretested and ready for immediate hookup to power and piping.



A



B



C

A Modular Above-Ground Packaged Station

Pump Size: 2" (50 mm) to 12" (300 mm)
Max Capacity: 5200 GPM* (328 lps)
Max Head: 325' (99 m)
Max Solids: 3" (76 mm)
Station Size: 10' (3 m) x 14' (4 m) to
11'6" (4 m) x 20' (6 m)

C 6x6T Above-Ground Packaged Station

Pump Size: 2" (50 mm) to 6" (150 mm)
Max Capacity: 1480 GPM* (94 lps)
Max Head: 158' (48 m)
Max Solids: 3" (76 mm)

B 8x12 Above-Ground Packaged Station

Pump Size: 2" (50 mm) to 8" (200 mm)
Max Capacity: 2660 GPM (168 lps)
Max Head: 320' (98 m)
Max Solids: 3" (76 mm)





D 6x6 Above-Ground Packaged Station

Pump Size: 2" (50 mm) to 6" (150 mm)
 Max Capacity: 1480 GPM* (94 lps)
 Max Head: 158' (48 m)
 Max Solids: 3" (76 mm)

E Above-Ground Submersible Valve Package (ASVP)

Pump Size: 3" (75 mm) to 6" (150 mm)
 Max Capacity: 2280 GPM* (144 lps)
 Max Head: 172' (52 m)
 Max Solids: 3" (76 mm)
 Horsepower: 3 HP (2 kW) to 50 HP (37 kW)

F 7x10 Above-Ground Packaged Station

Pump Size: 2" (50 mm) to 8" (200 mm)
 Max Capacity: 2660 GPM* (168 lps)
 Max Head: 158' (48 m)
 Max Solids: 3" (76 mm)

G Auto-Start Packaged Station

Pump Size: 2" (50 mm) to 10" (250 mm)
 Max Capacity: 3400 GPM* (215 lps)
 Max Head: 320' (98 m)
 Max Solids: 3" (76 mm)

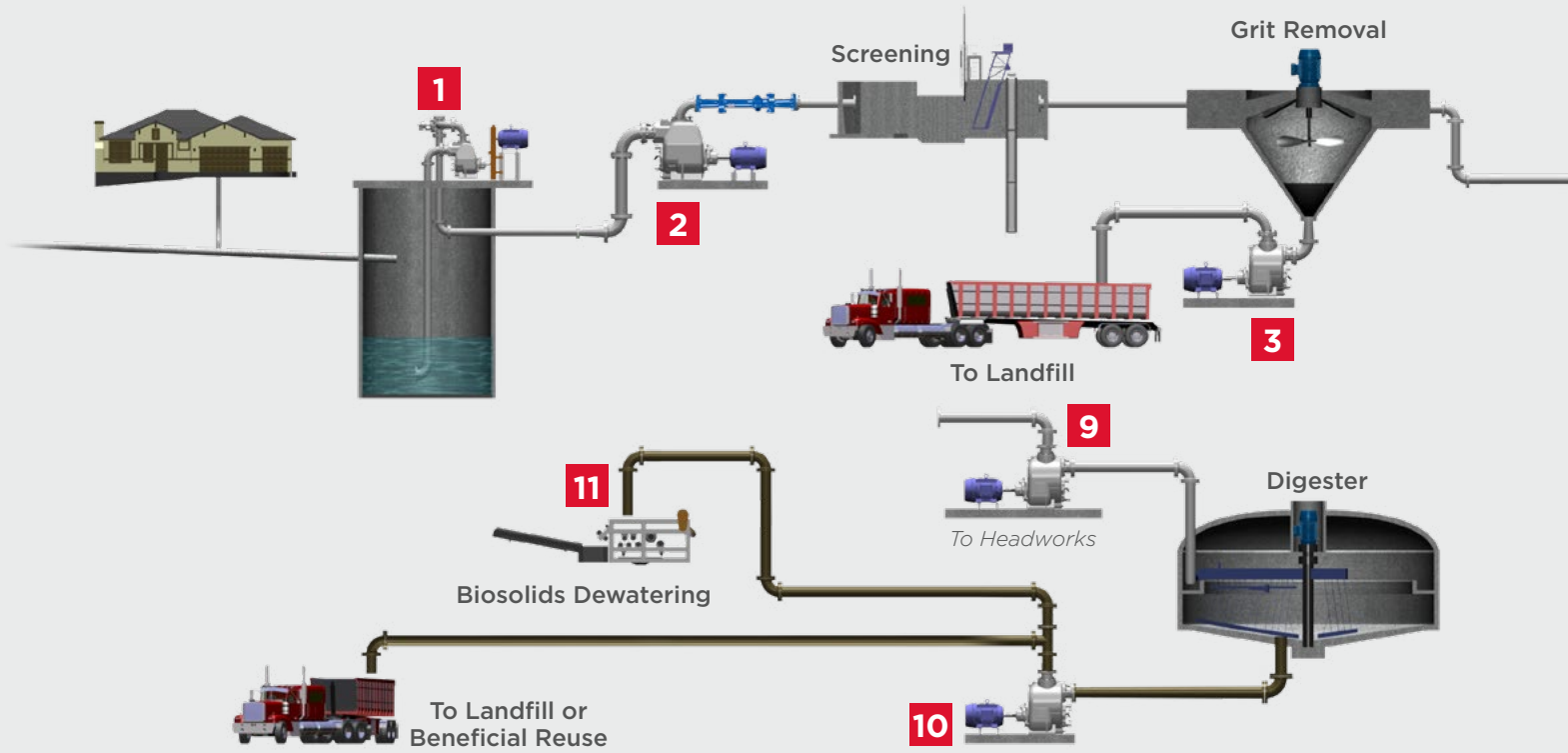
H Base-Mounted Packaged Station

Pump Size: 2" (50 mm) to 10" (250 mm)
 Max Capacity: 3400 GPM* (215 lps)
 Max Head: 320' (98 m)
 Max Solids: 3" (76 mm)

*Single pump operation

Municipal Wastewater:

Treatment Plant Pumping Applications



01 Influent Pump Station

- ReliaSource® Modular Above-Ground
- ReliaSource® 8x12 Above-Ground
- ReliaSource® 6X6T Above-Ground
- ReliaSource® 6x6 Above-Ground
- ReliaSource® Above-Ground Submersible Valve Package (ASVP)
- ReliaSource® 7x10 Above-Ground
- ReliaSource® Auto-Start
- ReliaSource® Base-Mounted

02 Influent Equalization Pump

- Ultra V Series® Self-Priming Pumps
- Super T Series® Self-Priming Pumps
- 10 Series® Self-Priming Pumps
- 6400 Series™ Horizontal End Suction Pumps
- 6500 Series® Horizontal End Suction Pumps
- SF Series® Submersible Pumps

03 Grit Pump

- Ultra V Series® Self-Priming Pumps
- Super T Series® Self-Priming Pumps
- 10 Series® Self-Priming Pumps
- SF Series® Submersible Pumps

04 Primary Sludge Pump

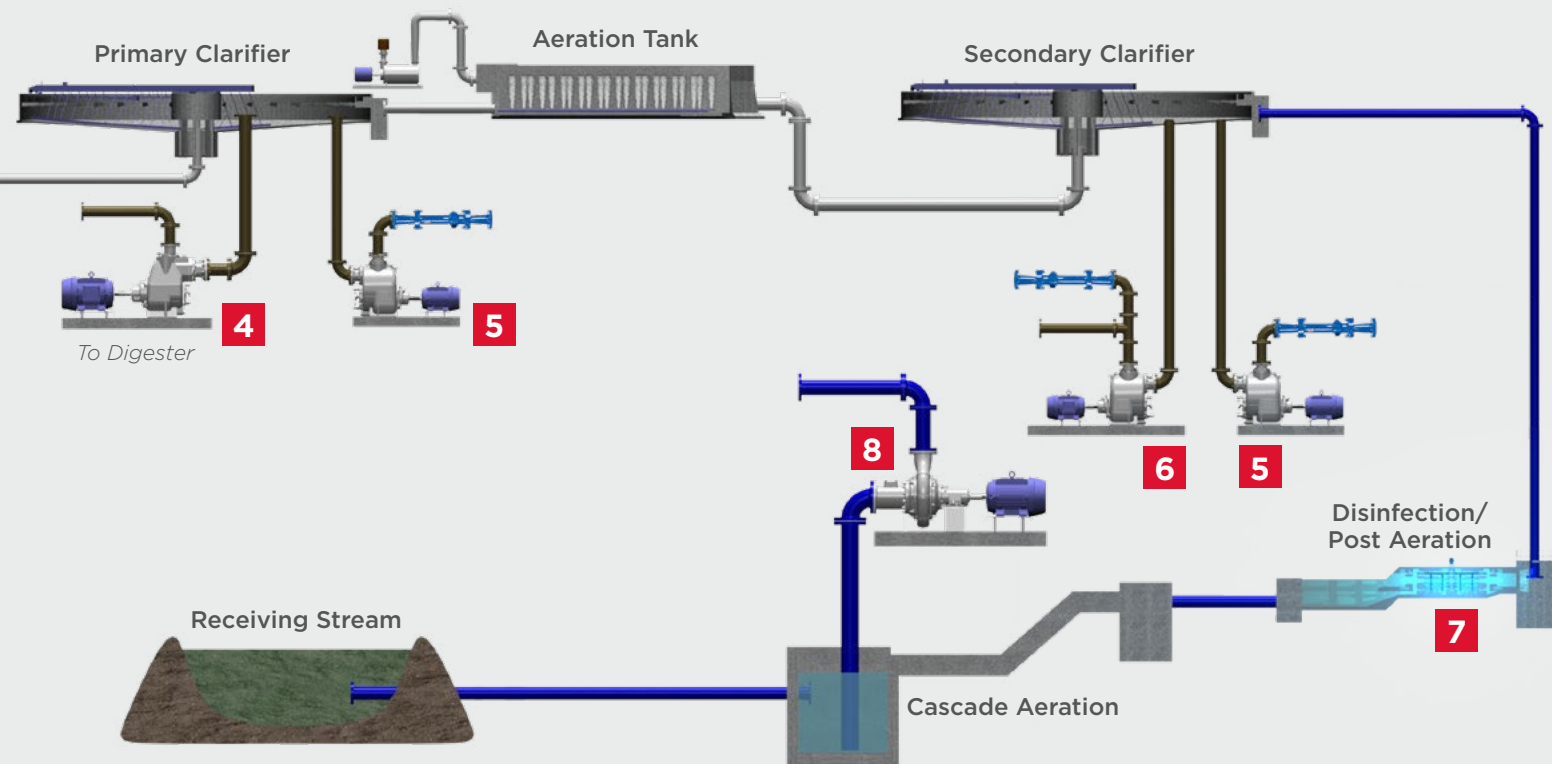
- Ultra V Series® Self-Priming Pumps
- Super T Series® Self-Priming Pumps
- 10 Series® Self-Priming Pumps
- 6400 Series™ Horizontal End Suction Pumps
- 6500 Series® Horizontal End Suction Pumps
- SF Series® Submersible Pumps

05 Scum Pump

- Ultra V Series® Self-Priming Pumps
- Super T Series® Self-Priming Pumps
- 6400 Series™ Horizontal End Suction Pumps
- 6500 Series® Horizontal End Suction Pumps
- SF Series® Submersible Pumps

06 RAS & WAS Pumps

- Ultra V Series® Self-Priming Pumps
- Super T Series® Self-Priming Pumps
- 10 Series® Self-Priming Pumps
- 6400 Series™ Horizontal End Suction Pumps
- 6500 Series® Horizontal End Suction Pumps
- SF Series® Submersible Pumps



07 Effluent Pump

- Ultra V Series® Self-Priming Pumps
- Super T Series® Self-Priming Pumps
- 10 Series® Self-Priming Pumps
- Super U Series® Self-Priming Pumps
- 6400 Series™ Horizontal End Suction Pumps
- 6500 Series® Horizontal End Suction Pumps
- SF Series® Submersible Pumps

08 Utility Water (Non-Potable) Pumps

- Ultra V Series® Self-Priming Pumps
- Super T Series® Self-Priming Pumps
- 10 Series® Self-Priming Pumps
- 80 Series® Self-Priming Pumps
- Super U Series® Self-Priming Pumps
- VG Series & VGH Series Standard Centrifugal Pumps
- 6400 Series™ Horizontal End Suction Pumps
- 6500 Series® Horizontal End Suction Pumps

09 Supernatant Recirculation Pump

- Ultra V Series® Self-Priming Pumps
- Super T Series® Self-Priming Pumps
- 6400 Series™ Horizontal End Suction Pumps
- 6500 Series® Horizontal End Suction Pumps

10 Dewatering Feed Pump

- Ultra V Series® Self-Priming Pumps
- Super T Series® Self-Priming Pumps
- 6400 Series™ Horizontal End Suction Pumps
- 6500 Series® Horizontal End Suction Pumps

11 Sludge Loading/Transfer Pump

- Ultra V Series® Self-Priming Pumps
- Super T Series® Self-Priming Pumps
- 6400 Series™ Horizontal End Suction Pumps
- 6500 Series® Horizontal End Suction Pumps
- SludgeKat® Self-Priming Positive Displacement Pump

Gorman-Rupp recognizes that the above treatment plant diagram will not apply for all municipalities and is meant for illustrative purposes only.

After Sale Support

Gorman-Rupp products stand the test of time due to our quality manufacturing processes, rigorous product testing and extensive after sale support.

Product Support

Every pump manufactured by Gorman-Rupp is supported with reference information. Pump operation and maintenance manuals (including parts lists), specification data sheets, performance curves and outline drawings in PDF and CAD formats are available on our website or through your distributor for every pump.

Warranty

The warranties on Gorman-Rupp products are some of the best in the industry. Gorman-Rupp has you covered with warranties up to 60 months.

Education & Safety

Gorman-Rupp is committed to remaining at the forefront of the industry with technology and safety. Training videos, demos and

in-person training sessions created for our distributors and end-users help to keep everyone up to date on the latest safety tips and pump maintenance.

Parts

When you need a replacement part, you'll have it fast. Gorman-Rupp is fully committed to keeping your equipment running long after installation and ensuring your pump or lift station continues to meet your requirements year after year. We sell parts through our network of distributors. Find a distributor in your area for assistance.

Service

Should your pump or lift station require service, our worldwide network of factory-trained distributors are ready to quickly respond. Our distributors have the expertise to support you and your pump or lift station long after installation.

Manufacturing Facilities

Gorman-Rupp USA
Mansfield, Ohio, USA

Gorman-Rupp Canada
St. Thomas, Ontario, Canada

Gorman-Rupp Europe
Waardenburg, Netherlands
Namur, Belgium

Gorman-Rupp Africa
Cape Town, South Africa
Durban, South Africa
Johannesburg, South Africa (Headquarters)

Distribution Center

Grand Prairie, Texas, USA

Engineering and manufacturing superiority has been the hallmark of Gorman-Rupp since our inception in 1933. Today we bring our products to life in some of the most efficient, modern and state-of-the-art manufacturing facilities in the world. Gorman-Rupp has a selection of nearly 3,000 pump models, and our world-class team of distributors has worked closely with thousands of end users around the world. We have the proven expertise and the resources to specify, manufacture, test and service your pump, and to ensure reliable performance for the long haul.

GRPUMPS.COM

GORMAN-RUPP PUMPS
P.O. BOX 1217
MANSFIELD, OHIO 44901-1217 | USA
TEL: 419.755.1011 | FAX: 419.755.1251



The Pump People®