

ULTRA[®] SERIES



ULTRA V SERIES[®]

High-Head,
High-Performance,
Self-Priming Trash Pumps

GR
GORMAN-RUPP
PUMPS

The Pump People[®]



A History Of Innovation

Gorman-Rupp has been revolutionizing the pumping industry since 1933. Many of the innovations introduced by Gorman-Rupp over the years have become industry standards.

More than ever, we continue to update our factories, processes, research and development and engineering to ensure that our pumps and systems are among the most reliable and efficient in the world. One of our most successful and innovative lines of pumps has been our self-priming models.

Revolutionary improvements were made in the 1960s with the introduction of our T Series® self-priming pumps. Since then, continuous improvements to head, flow and efficiency have been made.

In 2000, we introduced our Super T Series® with many added maintenance features to enhance serviceability. And, in 2005, Gorman-Rupp introduced the revolutionary Ultra V Series® which offers

industry-leading performance for self-priming applications.

Today, Gorman-Rupp self-priming pumps are the world's leading choice for waste-handling applications in industries such as steel and paper mills, mining operations, food processing plants, power plants, automotive factories, tanneries and wineries. They are also the pump of choice in many sewage-handling applications worldwide.

Gorman-Rupp's commitment to our original philosophy of innovation, continuous improvement, unparalleled quality and customer service continues to set us apart from others.



Based On A Legend

Built upon the foundation of the Super T Series®, Gorman-Rupp Ultra V Series® pumps excel in high-head applications where traditional self-priming trash pumps fall short.

Delivering Decades Of Performance And Value

Gorman-Rupp is committed to meeting your fluid-handling requirements long after installation. The quality manufacturing and testing that go into every Ultra V Series® pump guarantee long-lasting, trouble-free operation. And we provide fast parts service to back up our products and ensure your peace of mind.

Ultra V Series® pumps boast some of the lowest life cycle costs in the industry. Because of the quality manufacturing and testing that goes into every Gorman-Rupp product, you benefit from minimal service interruptions and some of the lowest

maintenance in the industry. Gorman-Rupp delivers the best ROI by ensuring low operating costs for decades.

When you need a replacement part for your Ultra V Series pump, you'll have it fast. With tens of thousands of genuine Gorman-Rupp parts and pumps at our disposal, we fill and ship most parts orders within 24 hours. Should your Ultra V Series pump or ReliaSource® pump package ever require service, our worldwide network of factory-trained distributors is ready to quickly respond to your needs.

With just one number to call for parts and service, it's easy and convenient to keep your equipment performing as it should.



Gorman-Rupp Ultra V Series® And VS Series

The Right Pump For The Job



V3A, V3B,
V3C, V3D



V4A, V4C



V6A, V6C

Superior Performance

The superior solids-handling and increased pressure capabilities of the Ultra V Series® pumps make them ideally suited for a variety of industrial and sewage applications. The Ultra V Series and VS Series solids-handling, self-priming centrifugal trash pumps offer up to three times the pressure and up to 60% more flow. Built upon the foundation of the Super T Series®, Gorman-Rupp Ultra V Series pumps excel in high-head applications where traditional self-priming trash pumps would struggle.

Available in 3", 4" and 6" discharge sizes, Ultra V Series pumps can be purchased as basic units or configured as a sound-attenuated, engine-driven back-up system. Additionally, all models can be incorporated into a ReliaSource® packaged station that is engineered, assembled, tested and shipped, ready for easy installation at the job site.





VS3A, VS3B



VS4A



VS6A

Top Of The Line Features

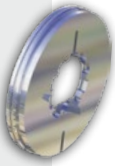
- Up to three times the pressure
- Up to 60% increased flow
- Greater efficiencies
- Self-cleaning features
- Reduced footprint
- Unique configuration capabilities
- Improved solids-handling
- Externally removable suction check valve

A New Era In Solids-Handling Technology

Deal With Tough Solids

New challenges for solids-handling pumps are presented with the rise of stringy solids such as flushable, nonwoven wipes which are increasingly present in sewage. This, along with other clog-prone solids such as feathers in poultry processing applications, can be dealt with effectively with the Gorman-Rupp Eradicator® Solids Management System. This is available for all Ultra V Series® and VS Series pumps.

Design Features



The Eradicator® system features an aggressive self-cleaning wearplate incorporating a number of notches and grooves, as well as a revolutionary tooth, that helps break up stringy materials and pass them through the pump without impacting performance or interrupting service. A special back cover includes a patented lightweight inspection cover that can easily be removed to inspect the impeller. The innovative design greatly reduces troublesome clogging and expensive downtime.

Solids-Handling Impeller



The two-vane, semi-open solids handling impeller handles up to 3" (76.2 mm) diameter solids, depending on pump model. Pump out vanes on the impeller shroud reduce foreign material buildup behind the impeller and reduce pressure on the seal and bearings.



System Benefits

Easier access to the impeller, increased uptime, improved operational efficiency, reduced maintenance costs and lower life-cycle costs are major benefits of the Eradicator system. No longer does the entire back cover assembly have to be removed to gain access to the impeller and Eradicator-equipped pumps do not require expensive chopper blades that need periodic replacement. The system can be factory-equipped in new pumps or purchased as a retrofit kit that is interchangeable with Ultra V Series® pumps currently operating in the field.

Aggressive Self-Cleaning Wearplate

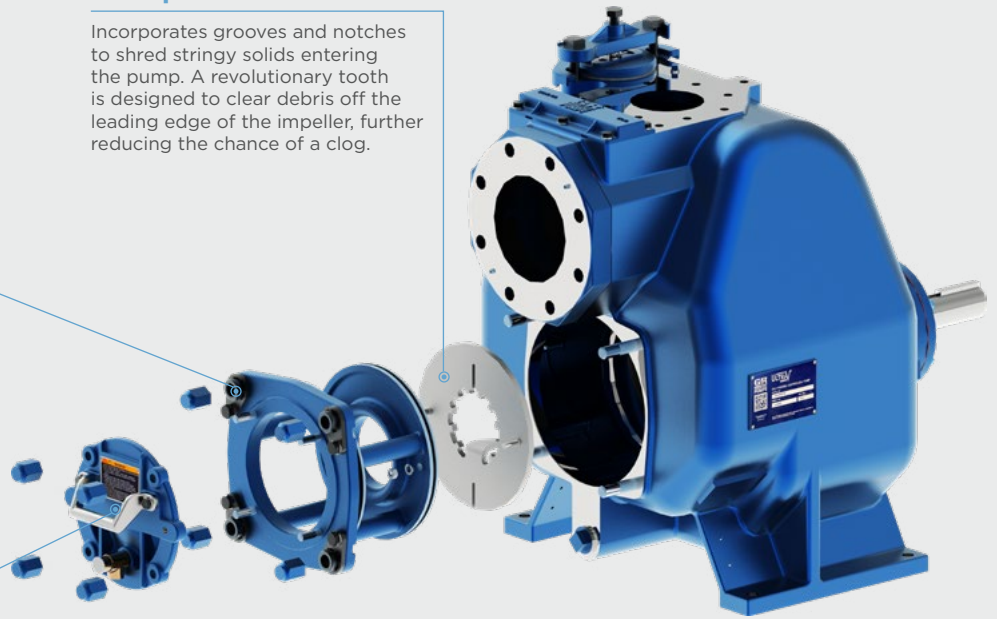
Incorporates grooves and notches to shred stringy solids entering the pump. A revolutionary tooth is designed to clear debris off the leading edge of the impeller, further reducing the chance of a clog.

Shimless Coverplate Adjustment

Allows for easy adjustment of face clearance between impeller and wearplate with minimal downtime.

Lightweight Inspection Cover

The patented design allows for easy access to the impeller for routine maintenance and clearing blockages.



Patented Inspection Cover

The removable inspection cover with easy-grip handle allows for access to the impeller without disturbing the impeller and wearplate clearance. If a clog does occur, the simple removal of four nuts with common hand tools provides quick and easy access to the obstruction. Upon debris removal, the pump can be returned to operation eliminating costly maintenance and maximizing uptime.



Externally Shimless Adjustment Design

The external shimless coverplate allows for easy adjustment of the clearance between the impeller and the wearplate. This process eliminates the need to realign belts, couplings or other drive components. In turn, the working height of the seal assembly and impeller back clearance are not disturbed. The unique collar and adjusting screw allow for incremental adjustments of the wearplate clearance.

Once adjustments have been made, the collar locks in place, maintaining the clearance setting even if the coverplate is removed. This design feature doubles the life of the impeller and wearplate while maintaining peak operating efficiency.



Economical Operation And Easy to Service

Ultra V Series® pumps are designed with ease of service in mind. Because they are self-priming, they can be mounted above the liquid being pumped. Should service or maintenance be required, it can be easily performed using common hand tools without disconnecting piping. The seal and wearplate can all be accessed through the shimless coverplate opening for inspection or service. Should a clog occur, the easily removable lightweight inspection cover provides quick access to the impeller without resetting the wearplate to impeller clearance for maximized uptime and increased maintenance efficiency.



Cartridge Seal

Exclusive double-floating, self-aligning, oil lubricated mechanical cartridge seal with stationary and rotating face of silicon carbide or tungsten titanium carbide is specifically designed for abrasive and/or trash handling service. Consult the factory for additional seal configurations.



Check Valve

A positive sealing, externally removable suction check valve is standard on Ultra V Series® models. This eliminates the need to disconnect any piping for inspection or replacement. The check valve has a blowout center that limits excessive volute pressure, protecting the pump.

Dual Bearing Protection

An atmospheric barrier along with two lip seals provide additional protection of the pump bearings. This unique design also allows for quick and easy external monitoring of the bearing cavity.

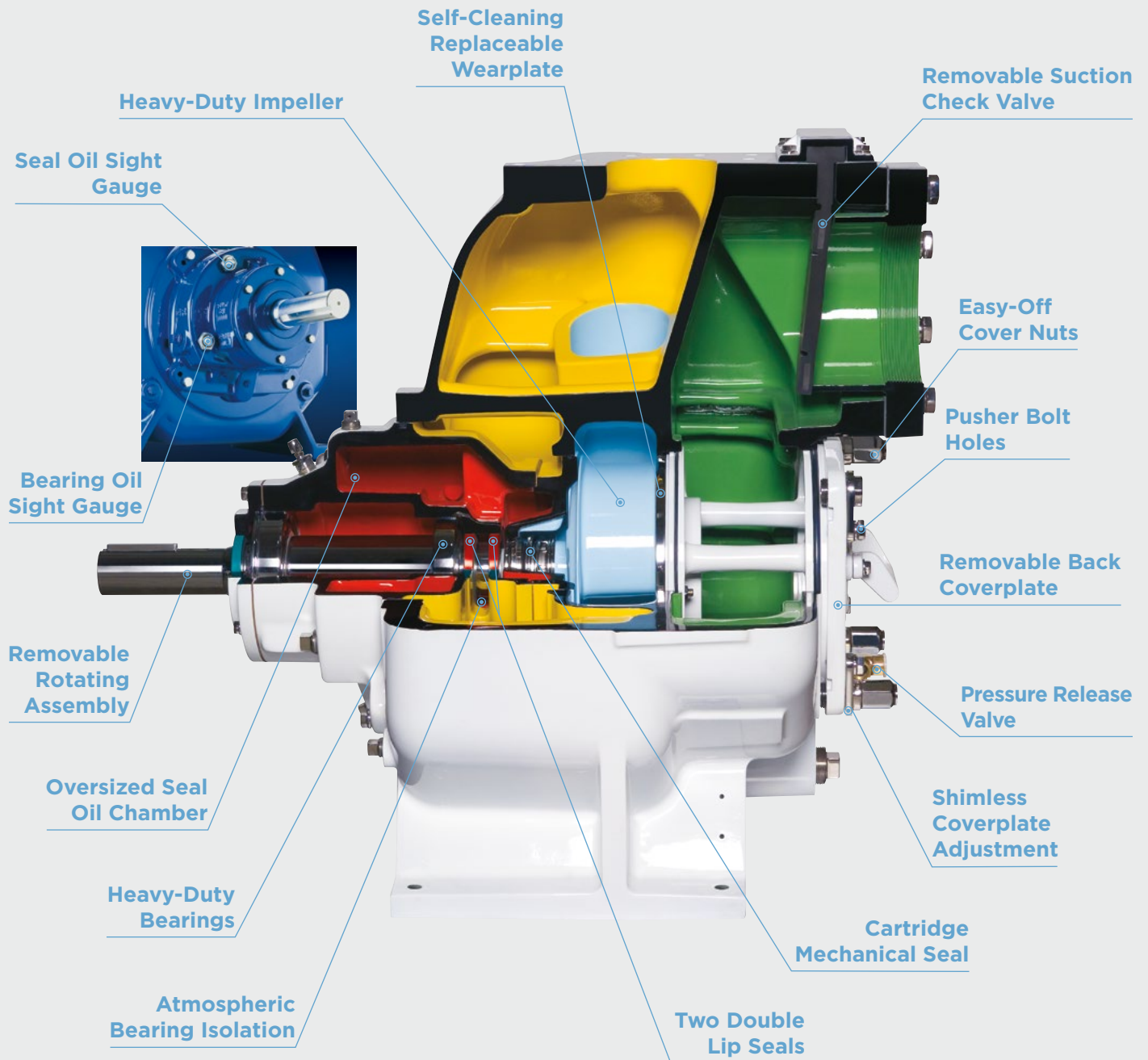


Removable Rotating Assembly

The entire rotating assembly can be removed without disturbing the pump volute or piping. Pusher bolt holes are provided to assist with removal. This allows for quick and easy installation of a spare rotating assembly, resulting in maximum uptime.

Replaceable Wearplate

A replaceable self-cleaning wearplate ensures debris is cleared away and does not collect on the impeller vanes. This innovative design reduces the overall life cycle costs by minimizing blockage within the pump.



Specifications

Pump Size: 3" (75 mm), 4" (100 mm), 6" (150 mm)
 Max Capacity: 1904 GPM (120 lps)
 Max Head: 325' (99 m)
 Max Solids: 3" (76 mm)
 Materials of Construction: Cast Iron



All Ultra V Series[®] pumps come standard with a five-year warranty.



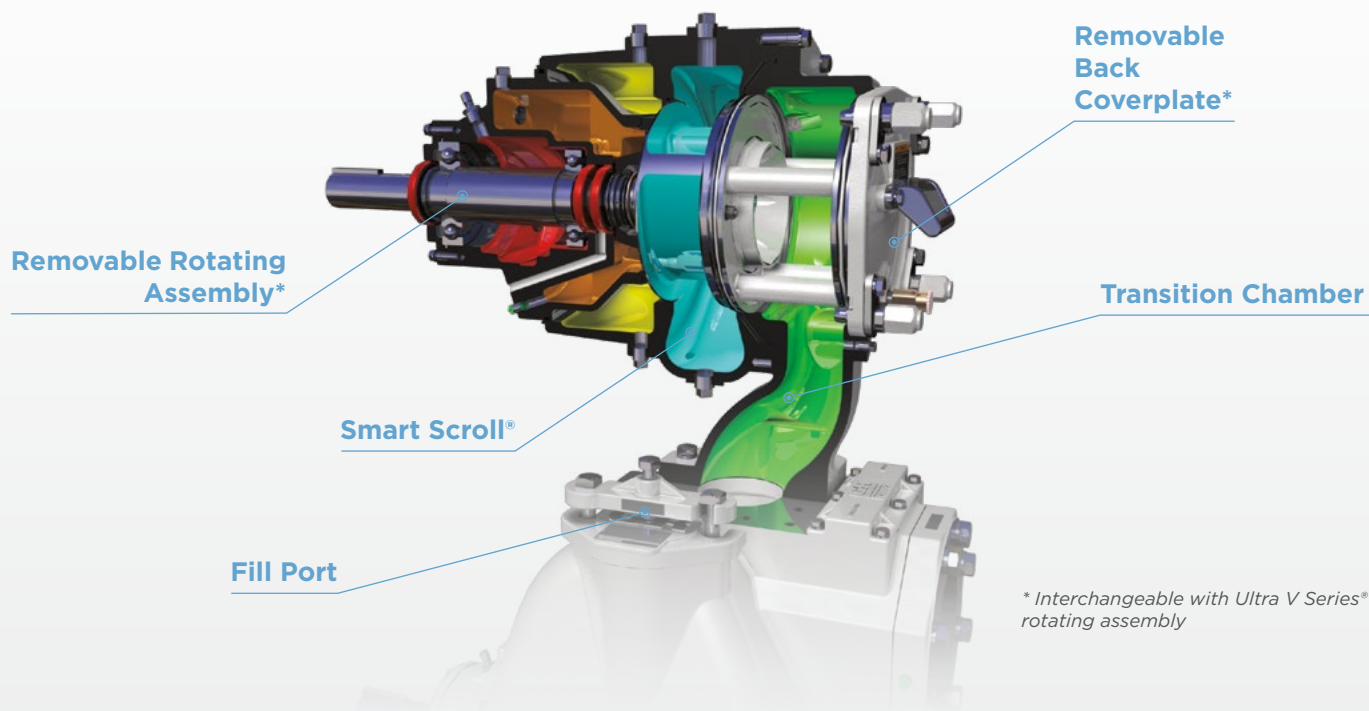
Three Times The Pressure

The patented UltraMate® can be paired with the Ultra V Series® pump when system requirements exceed its exceptional performance range. By adding the UltraMate unit directly to an Ultra V Series through a innovative transition chamber, maximum pressure is increased up to three times the pressure of traditional solids-handling, self-priming, single stage pumps. Losses associated with conventional series connected pumps are also reduced, resulting in increased efficiencies.



Smart Scroll® Discharge Locator

The patented Smart Scroll® can be rotated to fit your specific piping system. It can be ordered in vertical or horizontal facing left or right positions.



** Interchangeable with Ultra V Series® rotating assembly*

Configured To Suit Your Pumping Requirements



Ultra V Series®
ReliaSource® Packaged
Pumping Stations



Ultra V Series®
ReliaPrime® Sound-attenuated
Back-up System

Optional Accessories

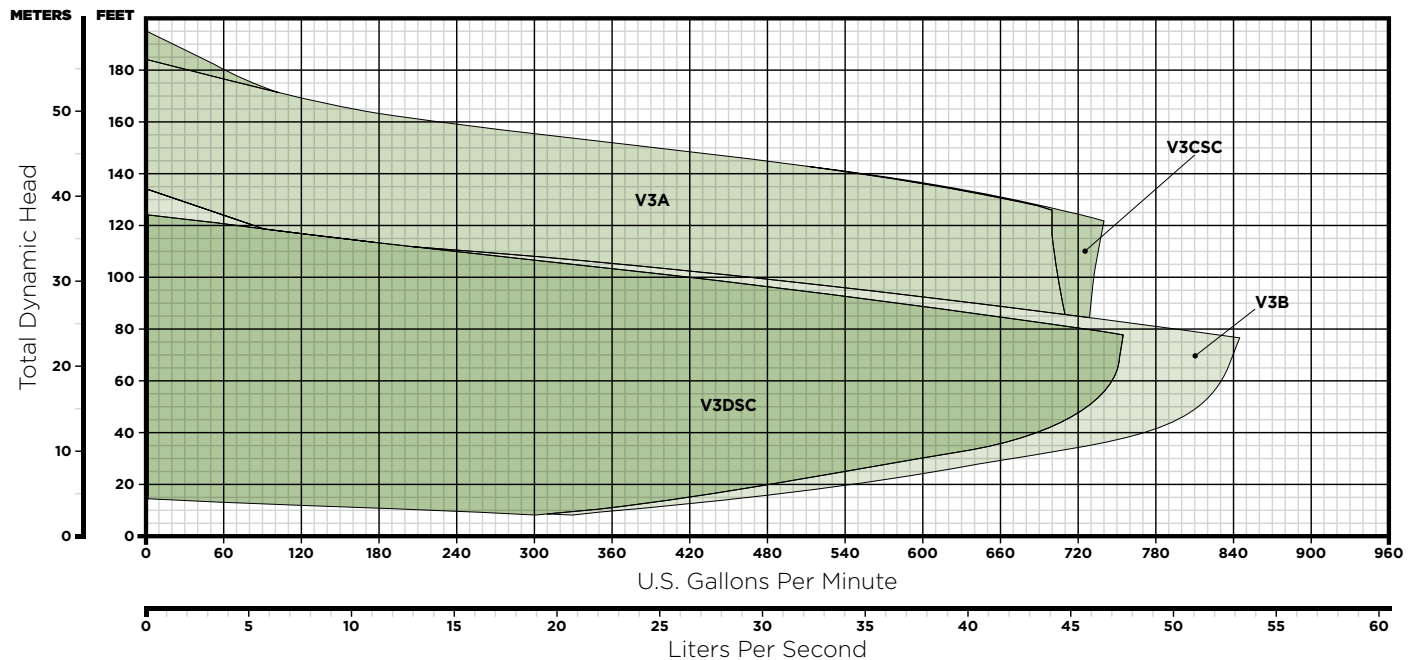
- Industrial & municipal ReliaSource® packages
- Automatic air release valve
- Discharge check valve
- Suction and discharge flange kits
- Volute casing heater
- Suction and discharge gauge kits
- Complete replacement rotating assembly
- Pump spare parts kit
- Pump easy drain kit
- Custom seal options
- Controls and complete stations
- Optional elastomers and suction flap valve materials (EPDM, Neoprene, AFLASTFE, Viton®*)

*Viton® is a registered trademark of DuPont Performance Elastomers. All rights reserved.



High Head, High Performance Solids-Handling Trash Pumps

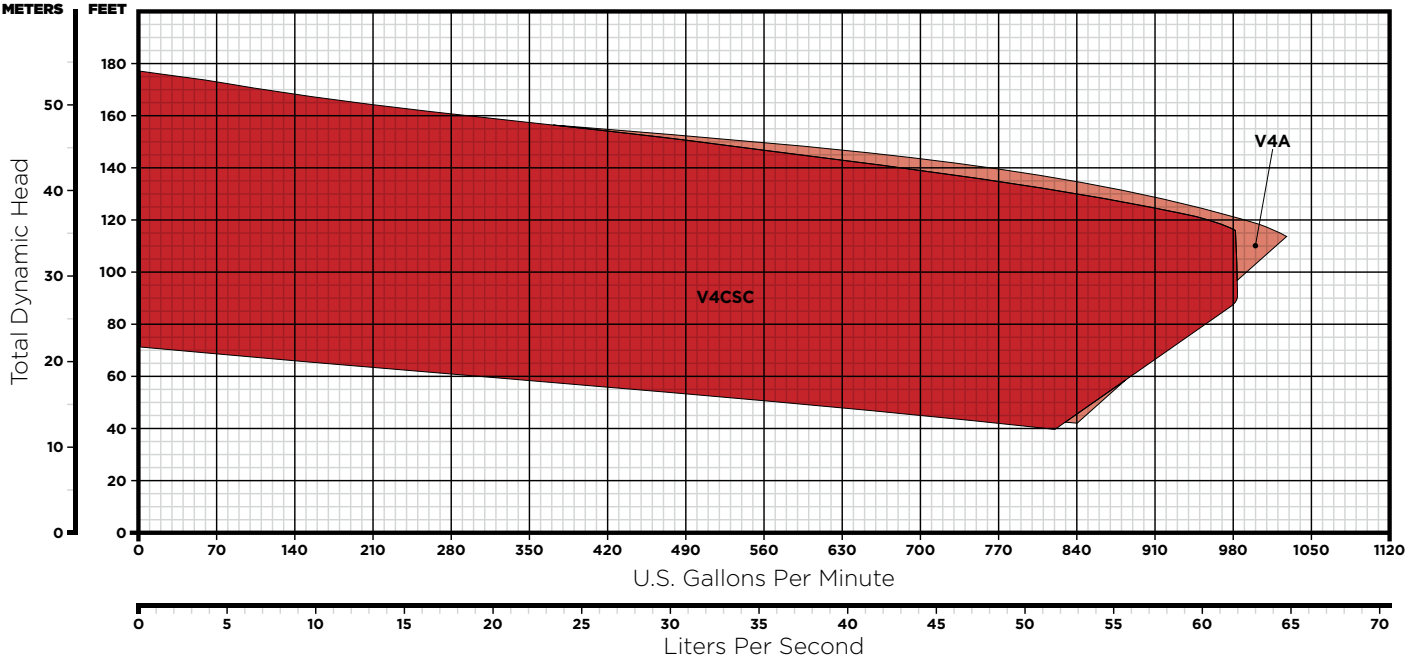
3" Ultra V Series® Models



Operating Ranges

Model	Size (Suc. x Dis.)	Max. Capacity	Max. Head	Max. Solids	Construction
V3A	4" x 3" (100 mm x 75 mm)	720 GPM (45 lps)	158' (48 m)	2.5" (64 mm)	Cast Iron
V3B	4" x 3" (100 mm x 75 mm)	845 GPM (53 lps)	110' (34 m)	3" (76 mm)	Cast Iron
V3CSC	4" x 3" (100 mm x 75 mm)	740 GPM (47 lps)	160' (49 m)	2.5" (64 mm)	Cast Iron
V3DSC	4" x 3" (100 mm x 75 mm)	755 GPM (48 lps)	109' (33 m)	3" (76 mm)	Cast Iron

4" Ultra V Series® Models



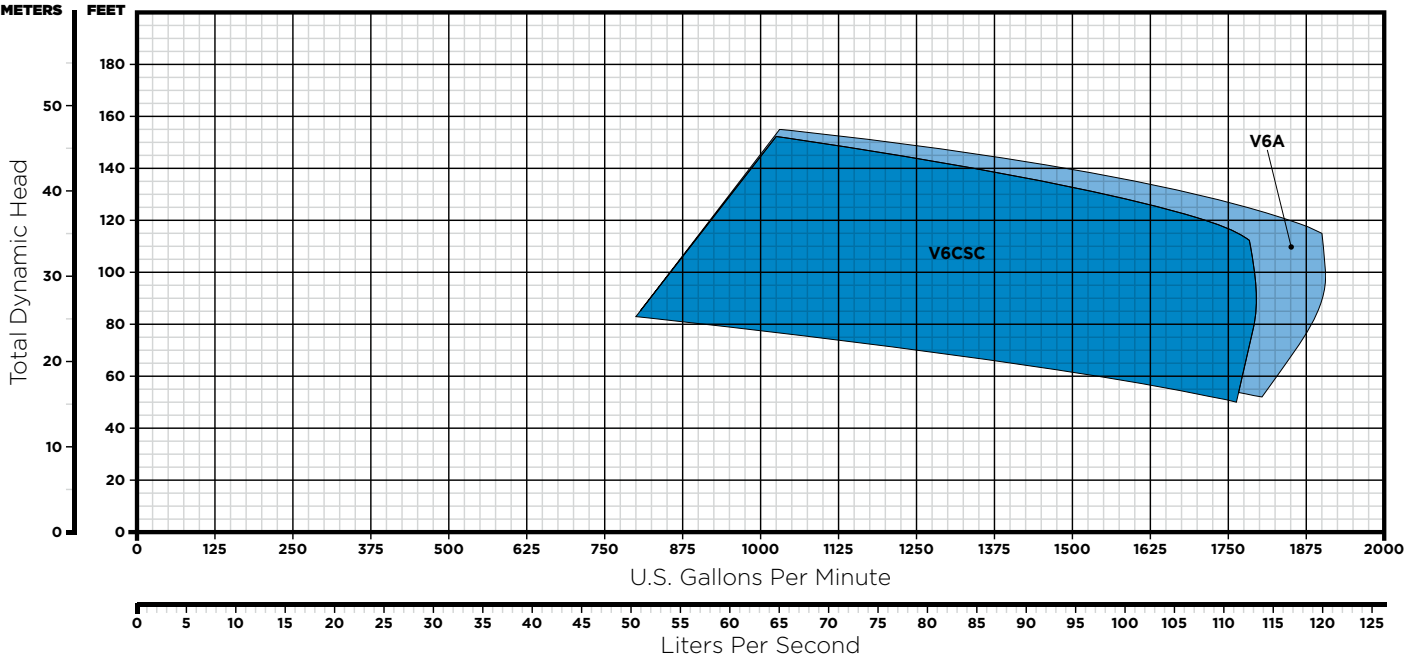
Operating Ranges

Model	Size (Suc. x Dis.)	Max. Capacity	Max. Head	Max. Solids	Construction
V4A	6" x 4" (150 mm x 100 mm)	1028 GPM (65 lps)	154' (47 m)	3" (75 mm)	Cast Iron
V4CSC	6" x 4" (150 mm x 100 mm)	984 GPM (62 lps)	154' (47 m)	3" (76 mm)	Cast Iron



Pumps That Deliver Decades Of Performance And Value

6" Ultra V Series® Models

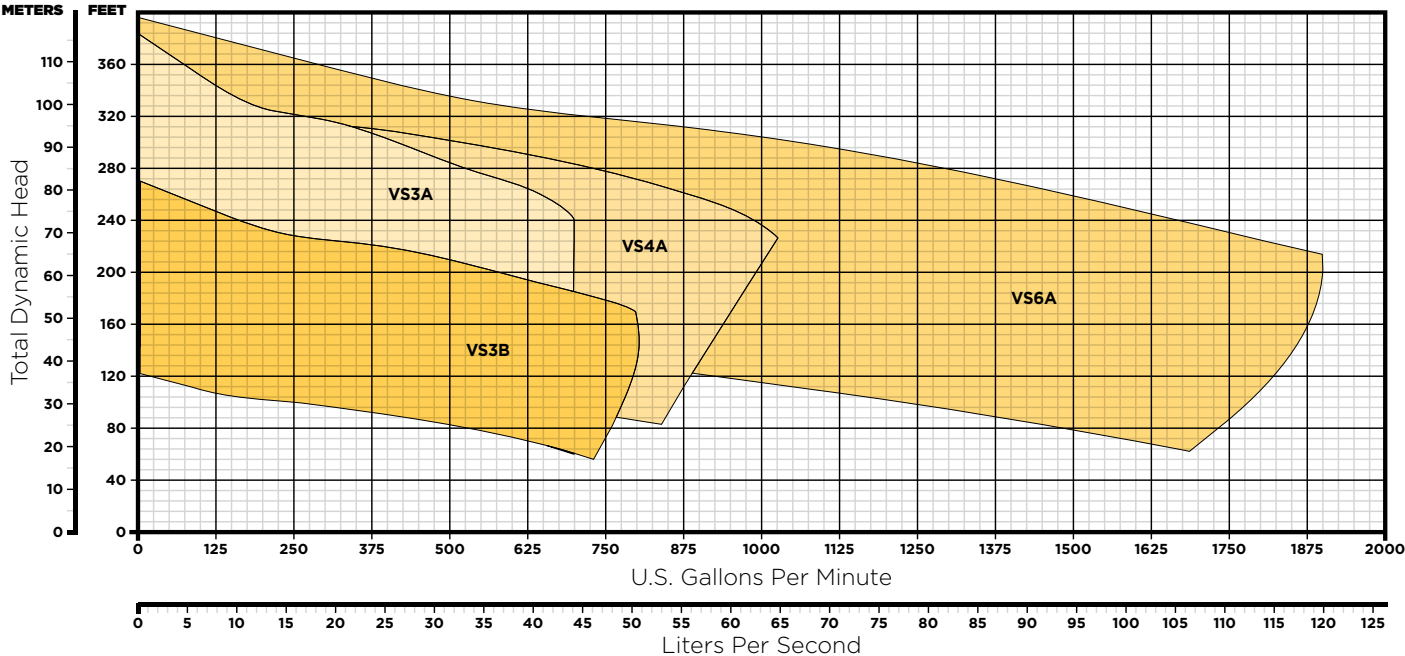


Operating Ranges

Model	Size (Suc. x Dis.)	Max. Capacity	Max. Head	Max. Solids	Construction
V6A	8" x 6" (200 mm x 150 mm)	1904 GPM (120 lps)	156' (48 m)	3" (76 mm)	Cast Iron
V6CSC	8" x 6" (200 mm x 150 mm)	1795 GPM (113 lps)	152' (46 m)	3" (76 mm)	Cast Iron



VS Series Models



Operating Ranges

Model	Size (Suc. x Dis.)	Max. Capacity	Max. Head	Max. Solids	Construction
VS3A	4" x 3" (100 mm x 75 mm)	700 GPM (44 lps)	320' (98 m)	2.5" (64 mm)	Cast Iron
VS3B	4" x 3" (100 mm x 75 mm)	804 GPM (51 lps)	218' (66 m)	3" (76 mm)	Cast Iron
VS4A	6" x 4" (150 mm x 100 mm)	1025 GPM (65 lps)	310' (95 m)	3" (76 mm)	Cast Iron
VS6A	8" x 6" (200 mm x 150 mm)	1904 GPM (120 lps)	325' (99 m)	3" (76 mm)	Cast Iron

After Sale Support

Gorman-Rupp products stand the test of time due to our quality manufacturing processes, rigorous product testing and extensive after sale support.

Product Support

Every pump manufactured by Gorman-Rupp is supported with reference information. Pump operation and maintenance manuals (including parts lists), specification data sheets, performance curves and outline drawings in PDF and CAD formats are available on our website or through your distributor for every pump.

Warranty

The warranties on Gorman-Rupp products are some of the best in the industry. Gorman-Rupp has you covered with warranties up to 60 months.

Education & Safety

Gorman-Rupp is committed to remaining at the forefront of the industry with technology and safety. Training videos, demos and

in-person training sessions created for our distributors and end-users help to keep everyone up to date on the latest safety tips and pump maintenance.

Parts

When you need a replacement part, you'll have it fast. Gorman-Rupp is fully committed to keeping your equipment running long after installation and ensuring your pump or lift station continues to meet your requirements year after year. We sell parts through our network of distributors. Find a distributor in your area for assistance.

Service

Should your pump or lift station require service, our worldwide network of factory-trained distributors are ready to quickly respond. Our distributors have the expertise to support you and your pump or lift station long after installation.

Manufacturing Facilities

Gorman-Rupp USA
Mansfield, Ohio, USA

Gorman-Rupp Canada
St. Thomas, Ontario, Canada

Gorman-Rupp Europe
Waardenburg, Netherlands
Namur, Belgium

Gorman-Rupp Africa
Cape Town, South Africa
Durban, South Africa
Johannesburg, South Africa (Headquarters)

Distribution Center

Grand Prairie, Texas, USA

Engineering and manufacturing superiority has been the hallmark of Gorman-Rupp since our inception in 1933. Today we bring our products to life in some of the most efficient, modern and state-of-the-art manufacturing facilities in the world. Gorman-Rupp has a selection of nearly 3,000 pump models, and our world-class team of distributors has worked closely with thousands of end users around the world. We have the proven expertise and the resources to specify, manufacture, test and service your pump, and to ensure reliable performance for the long haul.

GRPUMPS.COM

GORMAN-RUPP PUMPS
P.O. BOX 1217
MANSFIELD, OHIO 44901-1217 | USA
TEL: 419.755.1011 | FAX: 419.755.1251



The Pump People®