



PUMPS FOR CONSTRUCTION & RENTAL APPLICATIONS

Heavy-Duty Pumps That
Get The Job Done



The Pump People®



Solving Construction And Rental Challenges

Gorman-Rupp has been revolutionizing the pumping industry since 1933. Many of the innovations introduced by Gorman-Rupp over the years have become industry standards.

Gorman-Rupp developed its first self-priming centrifugal pump to provide our customers with a durable, reliable pump that could perform in a demanding environment. Since then, we've worked closely with our customers around the world to meet their solids-handling and clean fluid transfer needs.

With over one million Gorman-Rupp pumps and pump stations installed to date, we have the experience to intimately understand construction and rental pumping requirements. Our worldwide network of distributors has experienced industry professionals on staff, giving us firsthand knowledge of your most difficult applications.

We help you solve these challenges and make the most of your limited resources by designing our pumps and

stations to deliver decades of trouble-free performance. When you choose Gorman-Rupp for your construction pumping applications, you'll experience some of the lowest life cycle costs in the industry and benefit from minimal service interruptions. And you'll enjoy one of the highest customer satisfaction ratings in the industry—guaranteed.

A Leading Choice

Introduced in 1996, Prime Aire® pumps were developed with harsh construction environments in mind. Today, they are also used around the world across many construction, municipal and industrial settings.



State-of-the-Art Equipment And Facilities

As the world's leading manufacturer of pumps and pumping systems, Gorman-Rupp offers you access to one of the largest and highest quality lines of construction pumps available in the marketplace today.

We maintain nearly one million square feet of the most modern manufacturing, testing and warehousing facilities in the world. Our experienced engineers take advantage of the latest technologies and innovations to custom-design, manufacture and assemble our products.

We perform rigorous testing based on Hydraulic Institute standards and test to

customers' actual operating conditions in our state-of-the-art testing facility guaranteeing innovative, superior-quality products that are ready to tackle your toughest jobs.

To ensure you get the right equipment for your requirements, Gorman-Rupp partners with a worldwide network of distribution and provides them with the best and most extensive training. Gorman-Rupp distributors will work hand-in-hand with you to recommend, customize and specify equipment. And they are always available should you ever require service assistance.

With just one number to call for parts and service, it's easy and convenient to keep your equipment performing as it should.



From Solids-Laden Liquids To Clean Water, Equipment That Keeps Fluids Moving



A



B



C

Priming-Assisted Pumps

Gorman-Rupp priming-assisted pumps are the perfect solution for applications where intermittent flow can be a problem. These pumps feature our positive priming system that allows the pumps to run dry continuously without causing damage. The priming system virtually eliminates leaks, reducing environmental concerns and giving the unique capability to operate under flooded-suction conditions.

A Prime Aire Plus® Engine Driven

Size: 3" (75 mm) to 16" (400 mm)
Max Capacity: 15400 GPM (972 lps)
Max Head: 540' (165 m)
Max Solids: 4" (102 mm)

C Prime Aire® Engine Driven

Size: 3" (75 mm) to 14" (350 mm)
Max Capacity: 9900 GPM (625 lps)
Max Head: 420' (128 m)
Max Solids: 3.5" (89 mm)

B Prime Aire Plus® Electric Driven

Size: 3" (75 mm) to 16" (400 mm)
Max Capacity: 15400 GPM (972 lps)
Max Head: 540' (165 m)
Max Solids: 4" (102 mm)



The diaphragm primer offers reliability and increased efficiency, as well as higher lifts for select Prime Aire® pump models.



D



E



F

D

Prime Aire®

Electric Driven

Size: 3" (75 mm) to 14" (350 mm)
Max Capacity: 9900 GPM (625 lps)
Max Head: 420' (128 m)
Max Solids: 3.5" (89 mm)

F

ValuPrime®

General Purpose Dewatering

Size: 4" (100 mm) to 6" (150 mm)
Max Capacity: 1520 GPM (96 lps)
Max Head: 150' (46 m)
Max Solids: 3" (76 mm)

E

Prime Aire®

Silent Pump

Size: 4" (100 mm) to 14" (350 mm)
Max Capacity: 9900 GPM (625 lps)
Max Head: 177' (54 m)
Max Solids: 3.5" (89 mm)



Engine-driven models are available with high-speed wheel kit or DOT-approved trailer with brakes and lighting kit.

Submersible Pumps

Gorman-Rupp submersible pumps are designed for efficient operation in both dewatering and solids-handling applications, while remaining out-of-sight, beneath the fluid's surface.



SF Series®

Solids-handling

Size: 3" (75 mm) to 8" (200 mm)
Max Capacity: 3400 GPM (215 lps)
Max Head: 172' (52 m)
Max Solids: 3" (76 mm)
Horsepower: 3 HP (2 kW) to 75 HP (56 kW)



S Series

Slimline

Size: 2" (50 mm) to 6" (150 mm)
Max Capacity: 2160 GPM (136 lps)
Max Head: 385' (117 m)
Max Solids: 0.5" (13 mm)
Horsepower: 1 HP (1 kW) to 60 HP (45 kW)



S Series

Widebase

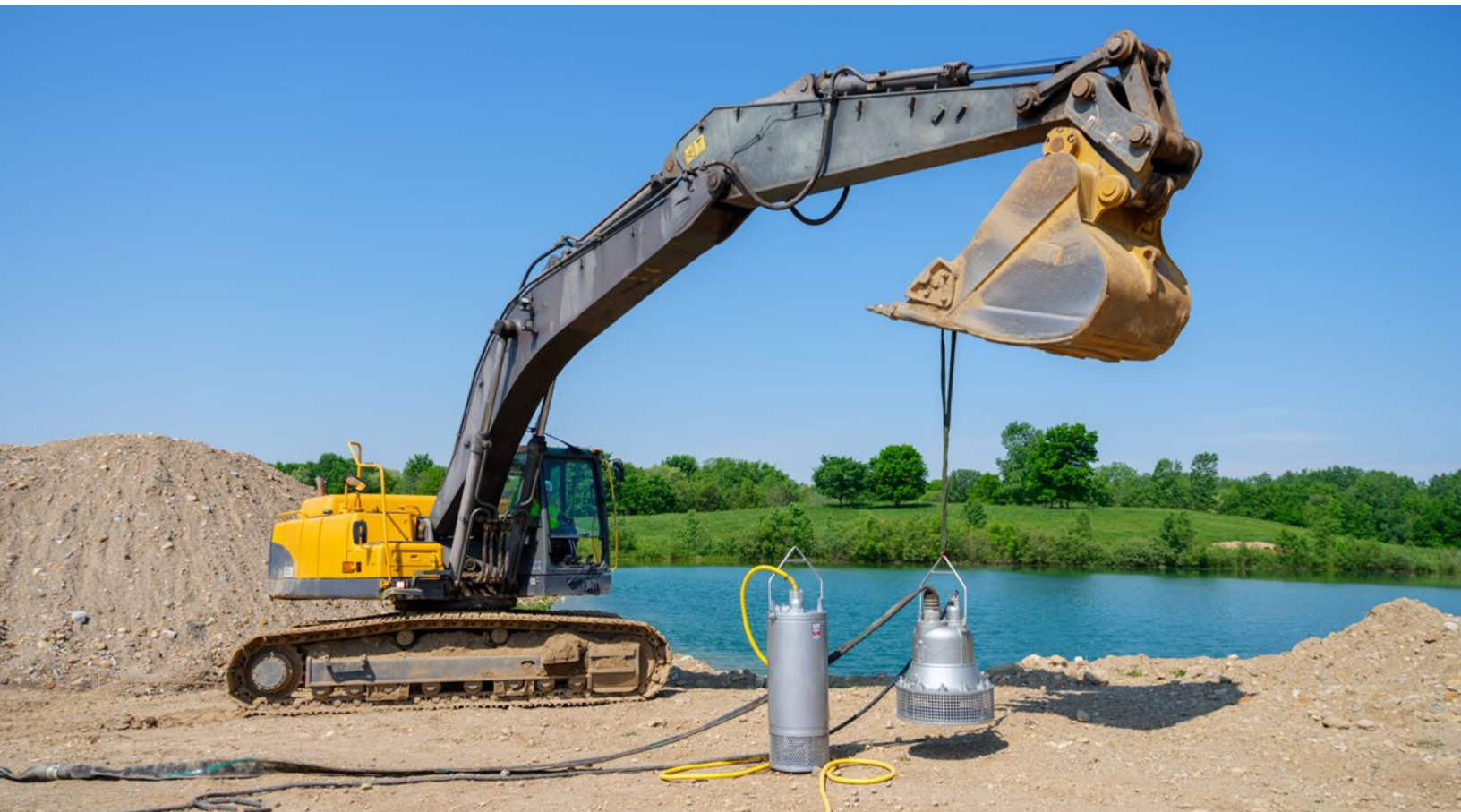
Size: 2" (50 mm) to 12" (300 mm)
Max Capacity: 7100 GPM (448 lps)
Max Head: 585' (178 m)
Max Solids: 1" (25 mm)
Horsepower: 2 HP (2 kW) to 275 HP (205 kW)



HS Series®

Hydraulic Driven

Size: 3" (75 mm) to 8" (200 mm)
Max Capacity: 2640 GPM (167 lps)
Max Head: 176' (54 m)
Max Solids: 5" (127 mm)



Standard And Horizontal End Suction Centrifugal Pumps

Gorman-Rupp offers hundreds of models of high volume, high pressure centrifugal pumps. These more efficient pumps have few moving parts, so maintenance and service are minimal.

Standard Centrifugal



50 Series

Size: 4" (100 mm) to 5" (125 mm)
Max Capacity: 1200 GPM (76 lps)
Max Head: 416' (127 m)
Max Solids: 0.5" (13 mm)



60 Series

Size: 2" (50 mm) to 12" (300 mm)
Max Capacity: 6800 GPM (429 lps)
Max Head: 500' (152 m)
Max Solids: 3" (76 mm)



VG Series & VGH Series

Size: 1.25" (30 mm) to 8" (200 mm)
Max Capacity: 4900 GPM (309 lps)
Max Head: 500' (152 m)
Max Solids: 1.38" (35 mm)

End Suction Centrifugal



6400 Series™

Size: 2" (50 mm) to 6" (150 mm)
Max Capacity: 2160 GPM (136 lps)
Max Head: 170' (52 m)
Max Solids: 4" (102 mm)



6500 Series®

Size: 3" (75 mm) to 16" (400 mm)
Max Capacity: 15400 GPM (972 lps)
Max Head: 530' (162 m)
Max Solids: 4" (102 mm)

Self-Priming Positive Displacement Pump

Gorman-Rupp's self-priming, positive displacement, hydraulic piston pump is designed to tackle your toughest pumping requirements. For applications involving heavy sludges, slurries and other viscous materials, the SludgeKat® offers powerful, reliable pumping where other pumps fail.



SludgeKat® Hydraulic Driven

Size: 4" (100 mm)
Max Capacity: 226 GPM (14 lps)
Max Head: 390' (119 m)
Max Solids: 2.4" (61 mm)

Gorman-Rupp Pumps:

The Longest Lasting In The Business



A



B



C



D

Self-Priming Centrifugal Pumps

Gorman-Rupp self-priming centrifugal pumps are easy to install and service. Because they're self-priming, they can be mounted high and dry at floor level, with only the suction line down in the liquid. If service or maintenance is required, it can be completed quickly and easily. There are no long drive shafts to install and align. And, there is never any need for service personnel to enter the sump. Pumps are available as basic units for connection to your power source or engine mounted.

A Super T Series® Engine Driven

Size: 4" (100 mm) to 6" (150 mm)
Max Capacity: 1640 GPM (104 lps)
Max Head: 138' (42 m)
Max Solids: 3" (76 mm)

B Super T Series® Silent Pump

Size: 4" (100 mm) to 6" (150 mm)
Max Capacity: 1640 GPM (104 lps)
Max Head: 136' (42 m)
Max Solids: 3" (76 mm)

C 10 Series® Engine Driven

Size: 4" (100 mm) to 6" (150 mm)*
Max Capacity: 1600 GPM (101 lps)
Max Head: 134' (41 m)
Max Solids: 3" (76 mm)

D 10 Series® Electric Driven

Size: 1.5" (38 mm) to 12" (300 mm)
Max Capacity: 6700 GPM (423 lps)
Max Head: 130' (40 m)
Max Solids: 3" (76 mm)

**Available Internationally Only*

Consult Gorman-Rupp factory for product availability of Final Tier IV engine models.

Setting the Standard

For applications dealing with bags, rags, stringy solids, or any other clog-prone material, the Eradicator® Solids Management System is available for all sizes of Gorman-Rupp Super T Series® and select Prime Aire® pumps. For the most aggressive applications and more effective solids management, 3", 4" and 6" Super T Series models are available with Eradicator Plus technology when the cutting and tearing of organic solids is required.

**Includes Eradicator® wearplate only.*



Specialty Self-Priming Centrifugal Pumps

The safest way to handle a hazardous liquids is to use a pump that is designed for the job. That is why Gorman-Rupp manufactures a specialty line of pumps classified as explosion proof and safe to use with volatile liquids.



O Series® High Pressure Engine Driven

Size: 2" (50 mm) to 6" (150 mm)
Max Capacity: 1350 GPM (85 lps)
Max Head: 400' (122 m)



O Series® Power Take-off and Hydraulic Motor Driven

Size: 2" (50 mm) to 3" (75 mm)
Max Capacity: 400 GPM (25 lps)
Max Head: 355' (108 m)



80 Series® Shield-A-Spark Fuel-Handling Engine Driven

Size: 2" (50 mm) to 3" (75 mm)
Max Capacity: 395 GPM (25 lps)
Max Head: 143' (43 m)



80 Series® Fuel-Handling, Close-coupled Electric Driven

Size: 1.25" (30 mm) to 1.5" (38 mm)
Max Capacity: 92 GPM (6 lps)
Max Head: 70' (21 m)



Pump Ends

Gorman-Rupp provides the right pumping solution when you need it by offering the pump ends individually for those who have access to engines and motors.



PA Series® & PAH Series®
Electric and Engine Driven

Size: 3" (80 mm) to 16" (400 mm)



50 Series & 60 Series
Electric and Engine Driven

Size: 2" (50 mm) to 12" (300 mm)



10 Series®, O Series® & Super T Series®
Electric and Engine Driven

Size: 3" (80 mm) to 12" (300 mm)

OTS Utility Pumps

Gorman-Rupp OTS pumps are a complete line of self-priming, standard centrifugal, submersible, diaphragm and rotary gear models that can be purchased anytime, anywhere. From high pressure to medium head, solids-handling to clean fluids, Gorman-Rupp has the right pump for the job. Drive options include engine-driven, electric motor-driven or submersible configurations.



Heavy-Duty Trash
Electric and Electronic Driven

Size: 2" (50 mm) to 6" (150 mm)
Max Capacity: 120 GPM (8 lps)
Max Head: 135' (41 m)



Medium Head
Electric and Engine Driven

Size: 1.25" (32 mm) to 6" (150 mm)
Max Capacity: 1860 GPM (117 lps)
Max Head: 210' (64 m)



Diaphragm
Electric Driven

Size: 2" (50 mm) to 4" (100 mm)
Max Capacity: 150 GPM (9 lps)
Max Head: 25' (8 m)



High Pressure
Electric and Engine Driven

Size: 2" (50 mm) to 4" (150 mm)
Max Capacity: 725 GPM (46 lps)
Max Head: 380' (116 m)



Submersible

Size: 1.5" (40 mm) to 4" (100 mm)
Max Capacity: 452 GPM (29 lps)
Max Head: 87' (27 m)



Hand Oscillating

Size: 0.75" (19 mm)
Max Capacity: 6 GPM (0.4 lps)

Pumps For A Variety Of Construction And Rental Applications

Gorman-Rupp pumps will be found operating in the most rugged environments. Out in the heat, steam, grease and grime, handling the corrosive and abrasive wastes other pumps cannot. Performing reliably month after month, year after year, in all types of systems, pumping solids and debris that would shut other operations down.

Bypass Water From Dams And Rivers To Repair Or Construct Dams

Flood Water

Dust Control

Sewage Bypass

Ditch Pumping

Mining Applications

- Coal Strip Mines
- Gold Mines
- Sand And Gravel Pits
- Run Off From Aggregate Stock Piles
- Limestone High Walls

Artificial Lake Filling

Bridge Work

Caisson Work

Coffer Dams

Curing Cement

Cities And Towns

- Water Departments
- Street Departments
- River Authorities

Excavations

Gravel Washing

Hydro-seeding And Fertilizing

Pipeline Construction

Water Supply For Rollers, Pavers, Mixers And Water Wagons

Golf Course And Lawn Irrigation

Washing Equipment

Driving Pilings

Jetting

Washing Off Forms

Log And Lumber Wetting

Well Point Systems

Oil Field Mud Pits

Water Transfer

Fuel Transfer

Barge Ballast Equalization

Hurricane And Storm Stand-by

Landfill Lagoons

Hunting Lease And Wildlife Management

Gorman-Rupp Is A Proud Member Of:



After Sale Support

Gorman-Rupp products stand the test of time due to our quality manufacturing processes, rigorous product testing and extensive after sale support.

Product Support

Every pump manufactured by Gorman-Rupp is supported with reference information. Pump operation and maintenance manuals (including parts lists), specification data sheets, performance curves and outline drawings in PDF and CAD formats are available on our website or through your distributor for every pump.

Warranty

The warranties on Gorman-Rupp products are some of the best in the industry. Gorman-Rupp has you covered with warranties up to 60 months.

Education & Safety

Gorman-Rupp is committed to remaining at the forefront of the industry with technology and safety. Training videos, demos and

in-person training sessions created for our distributors and end-users help to keep everyone up to date on the latest safety tips and pump maintenance.

Parts

When you need a replacement part, you'll have it fast. Gorman-Rupp is fully committed to keeping your equipment running long after installation and ensuring your pump or lift station continues to meet your requirements year after year. We sell parts through our network of distributors. Find a distributor in your area for assistance.

Service

Should your pump or lift station require service, our worldwide network of factory-trained distributors are ready to quickly respond. Our distributors have the expertise to support you and your pump or lift station long after installation.

Manufacturing Facilities

Gorman-Rupp USA
Mansfield, Ohio, USA

Gorman-Rupp Canada
St. Thomas, Ontario, Canada

Gorman-Rupp Europe
Waardenburg, Netherlands
Namur, Belgium

Gorman-Rupp Africa
Cape Town, South Africa
Durban, South Africa
Johannesburg, South Africa (Headquarters)

Distribution Center

Grand Prairie, Texas, USA

Engineering and manufacturing superiority has been the hallmark of Gorman-Rupp since our inception in 1933. Today we bring our products to life in some of the most efficient, modern and state-of-the-art manufacturing facilities in the world. Gorman-Rupp has a selection of nearly 3,000 pump models, and our world-class team of distributors has worked closely with thousands of end users around the world. We have the proven expertise and the resources to specify, manufacture, test and service your pump, and to ensure reliable performance for the long haul.

GRPUMPS.COM

GORMAN-RUPP PUMPS
P.O. BOX 1217
MANSFIELD, OHIO 44901-1217 | USA
TEL: 419.755.1011 | FAX: 419.755.1251



The Pump People®