

PERFORMANCE CURVE

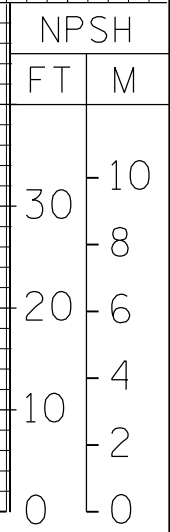
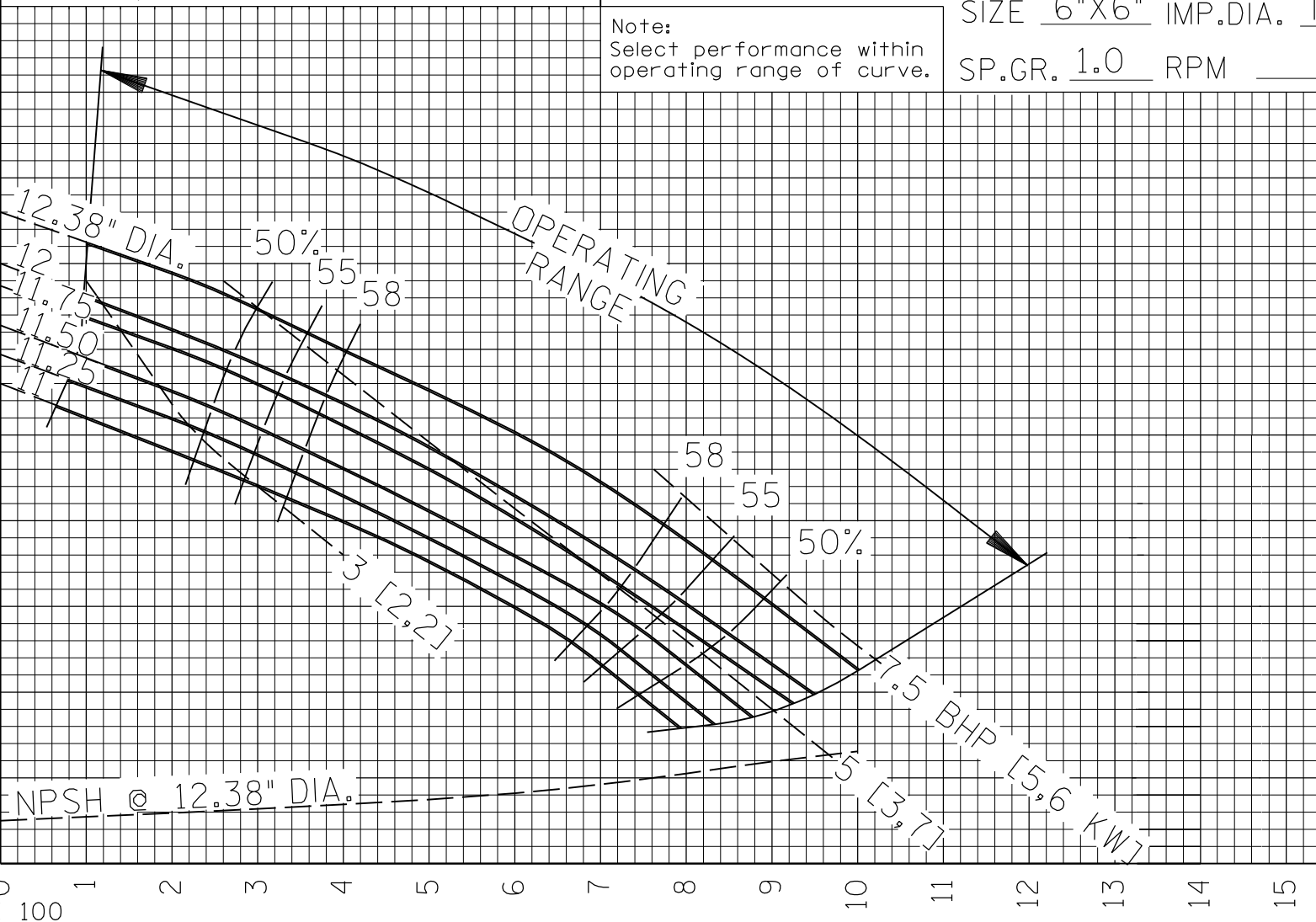
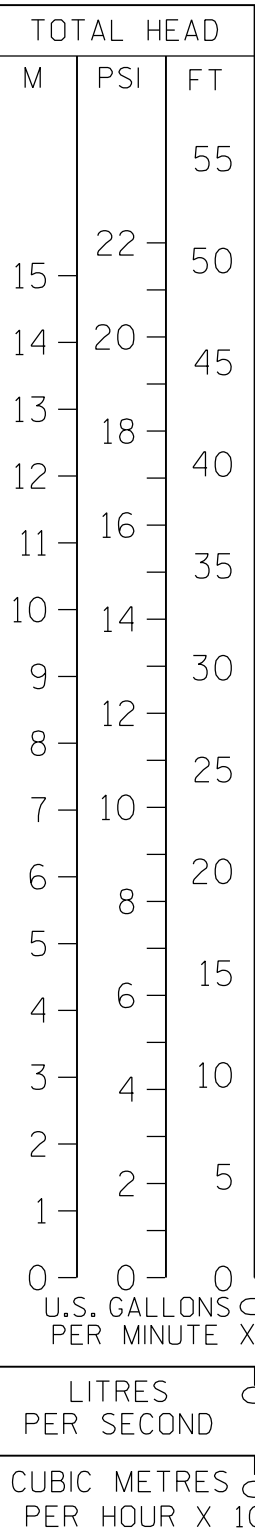
VOLUTE 10957E
 10957C CURVE T6A-B-3
 IMPELLER 38615-087
 10958 MODEL T6A-B
 SIZE 6"X6" IMP.DIA. NOTED
 SP.GR. 1.0 RPM 860

REPRIMING LIFTS				
DIA.	11"-11.25"	11.50"	11.75"-12"	12.38"
FEET	8	9	10	12
METERS	2,4	2,7	3,1	3,7

Figure NPSH required prior to using above table. DO NOT use as available Suction Lifts.

3.00"/[76,2 MM] DIA. MAX. SPHERICAL SOLIDS

Note:
 Select performance within operating range of curve.



FILE NO. T6ab.s03



T-1-07-R