

TOTAL HEAD

50 HZ REPRIMING LIFTS

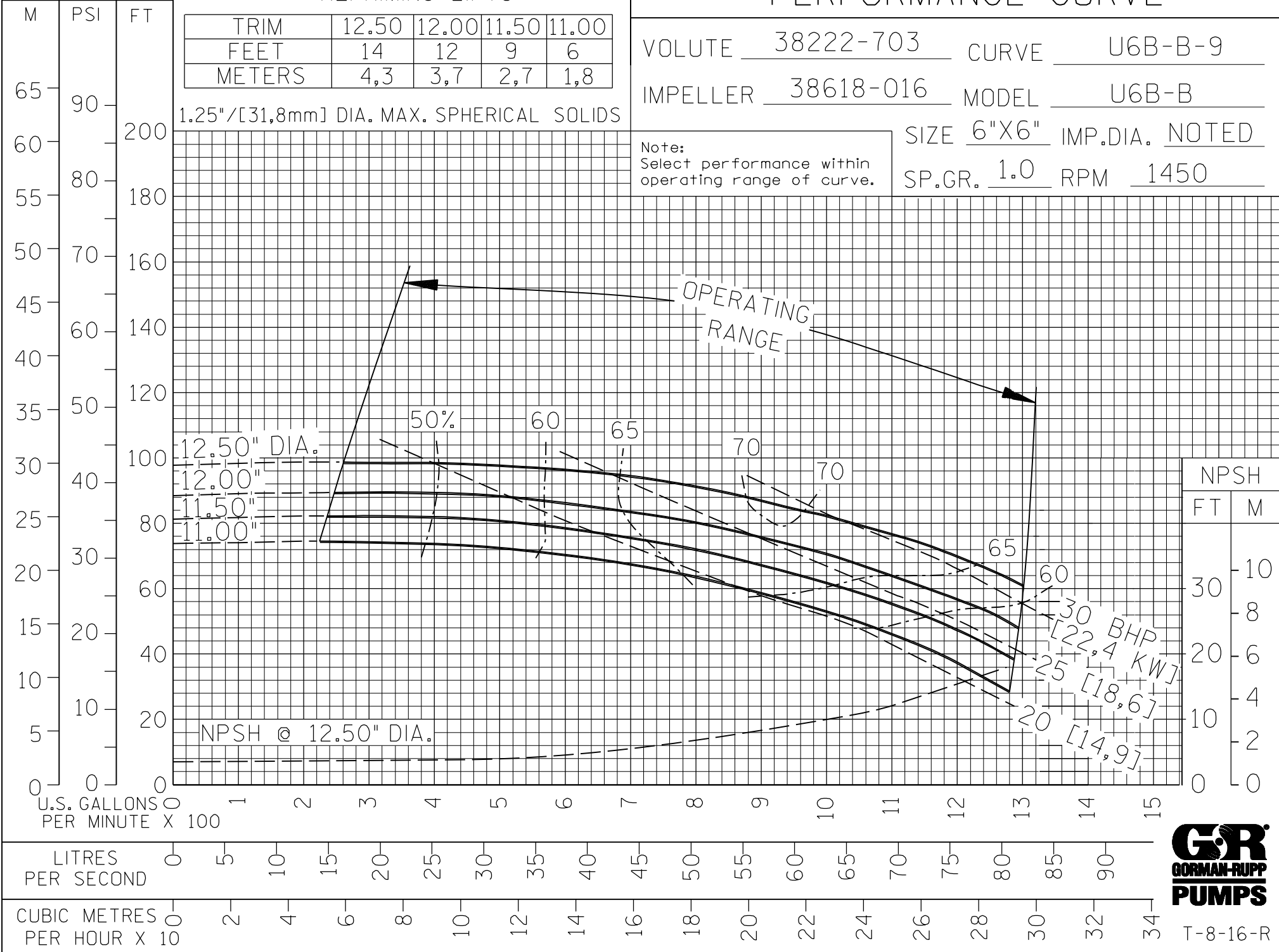
PERFORMANCE CURVE

TRIM	12.50	12.00	11.50	11.00
FEET	14	12	9	6
METERS	4,3	3,7	2,7	1,8

VOLUTE 38222-703 CURVE U6B-B-9
 IMPELLER 38618-016 MODEL U6B-B
 SIZE 6"X6" IMP.DIA. NOTED
 SP.GR. 1.0 RPM 1450

1.25"/[31,8mm] DIA. MAX. SPHERICAL SOLIDS

Note:
 Select performance within
 operating range of curve.



NPSH
 FT M
 30 10
 20 6
 10 4
 0 0

FILE NO. U6bb.s09



T-8-16-R