

TOTAL HEAD

REPRIMING LIFTS

PERFORMANCE CURVE

M
PSI
FT

32
44
100
28
40
90
36
80
24
32
70
20
28
60
16
24
50
20
40
12
16
40
8
12
30
4
8
20
0
4
10
0

TRIM	12.50	12.00	11.50	11.00
FEET	10	7	5	5
METERS	3,1	2,1	1,5	1,5

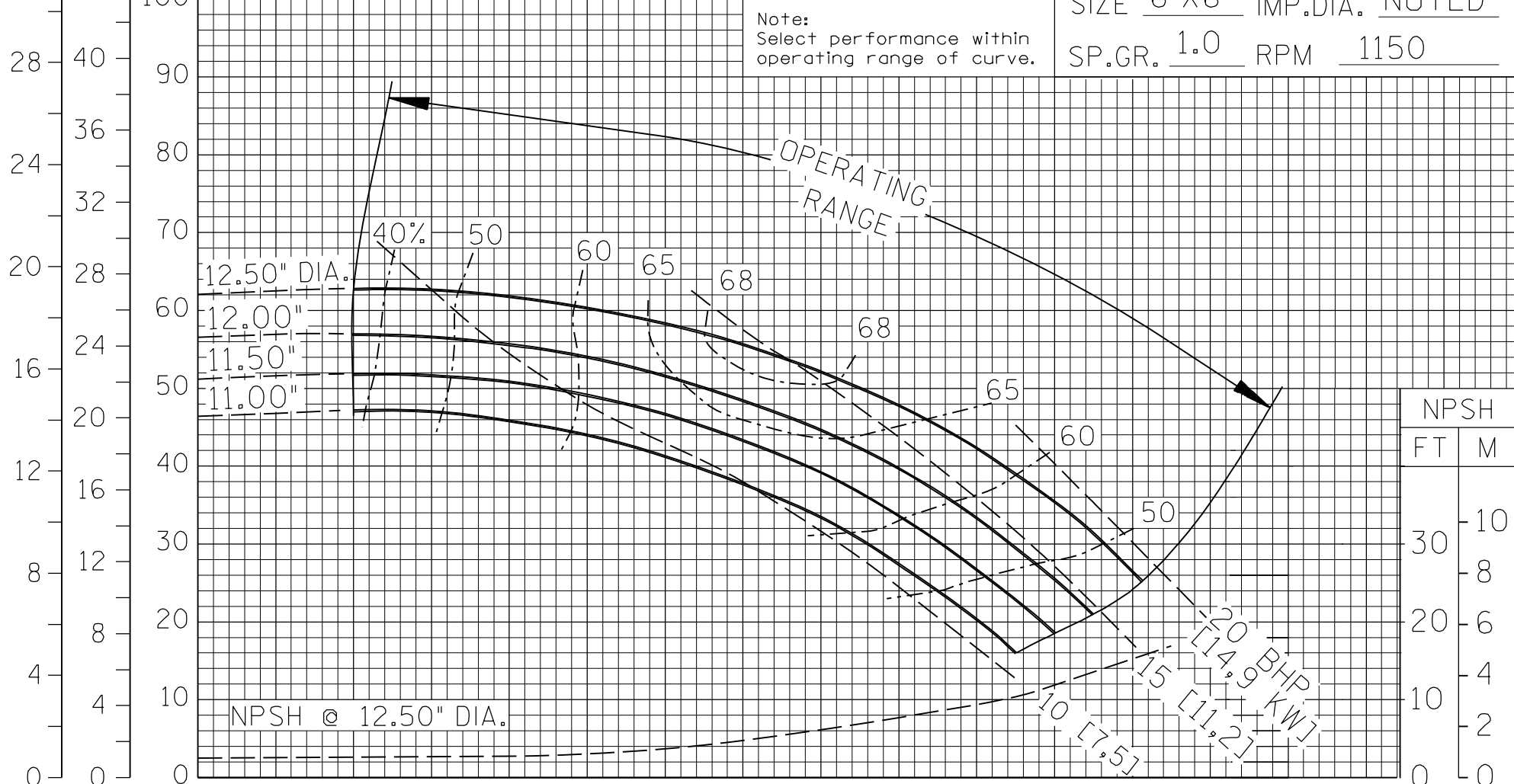
VOLUTE 38222-703 CURVE U6B-B-10
 IMPELLER 38618-016 MODEL U6B-B
 SIZE 6"X6" IMP.DIA. NOTED
 SP.GR. 1.0 RPM 1150

Note:
 Select performance within
 operating range of curve.

1.25"/[31,8mm] DIA. MAX. SPHERICAL SOLIDS

Note:
 Select performance within
 operating range of curve.

SP.GR. 1.0 RPM 1150



NPSH
 FT M
 30 10
 20 6
 10 4
 0 0

U.S. GALLONS PER MINUTE X 100
 LITRES PER SECOND
 CUBIC METRES PER HOUR X 10

0 1 2 3 4 5 6 7 8 9 10 11 12 13 14 15
 0 5 10 15 20 25 30 35 40 45 50 55 60 65 70 75 80 85 90
 0 2 4 6 8 10 12 14 16 18 20 22 24 26 28 30 32 34



T-8-16-R

FILE NO. u6bb.s10