

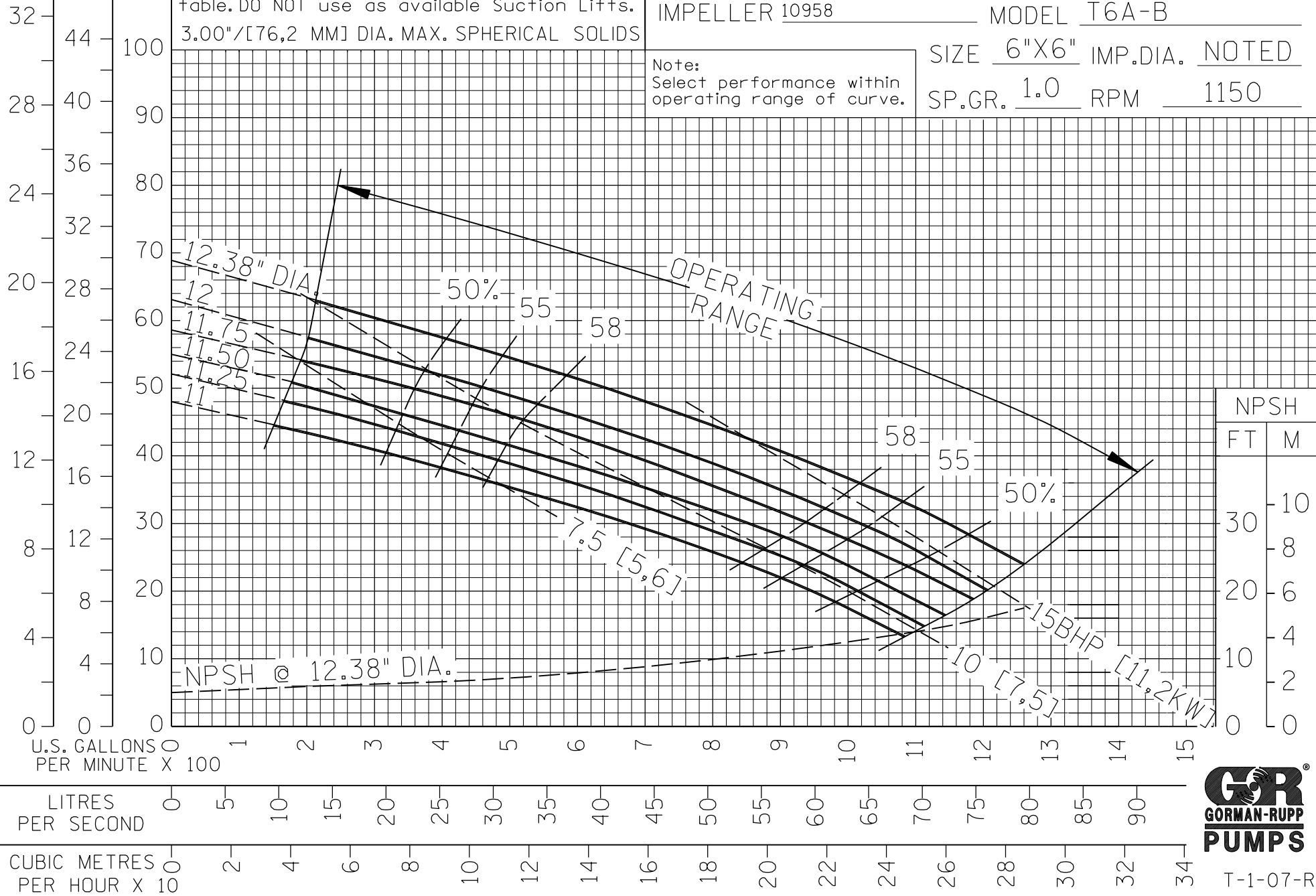
PERFORMANCE CURVE

VOLUTE 10957E CURVE T6A-B-2
 10957C
 38615-087
 IMPELLER 10958 MODEL T6A-B
 SIZE 6"X6" IMP.DIA. NOTED
 SP.GR. 1.0 RPM 1150

Note:
 Select performance within
 operating range of curve.

REPRIMING LIFTS					
DIA.	11"-11.25"	11.50"	11.75"	12"	12.38"
FEET	12	15	16	17	21
METERS	3,7	4,6	4,9	5,2	6,4

Figure NPSH required prior to using above table. DO NOT use as available Suction Lifts.
 3.00"/[76,2 MM] DIA. MAX. SPHERICAL SOLIDS



FILE NO. T6ab.s02



T-1-07-R