

TOTAL HEAD

THIS MODEL IS FOR DIRECT COUPLED DRIVE ONLY

PERFORMANCE CURVE

M
PSI
FT
220
300
200
180
160
140
120
100
80
60
40
20
0

2.00"/[50,8 MM] DIA. MAX. SPHERICAL SOLIDS

VOLUTE 38219-004 CURVE 6510A-B-2

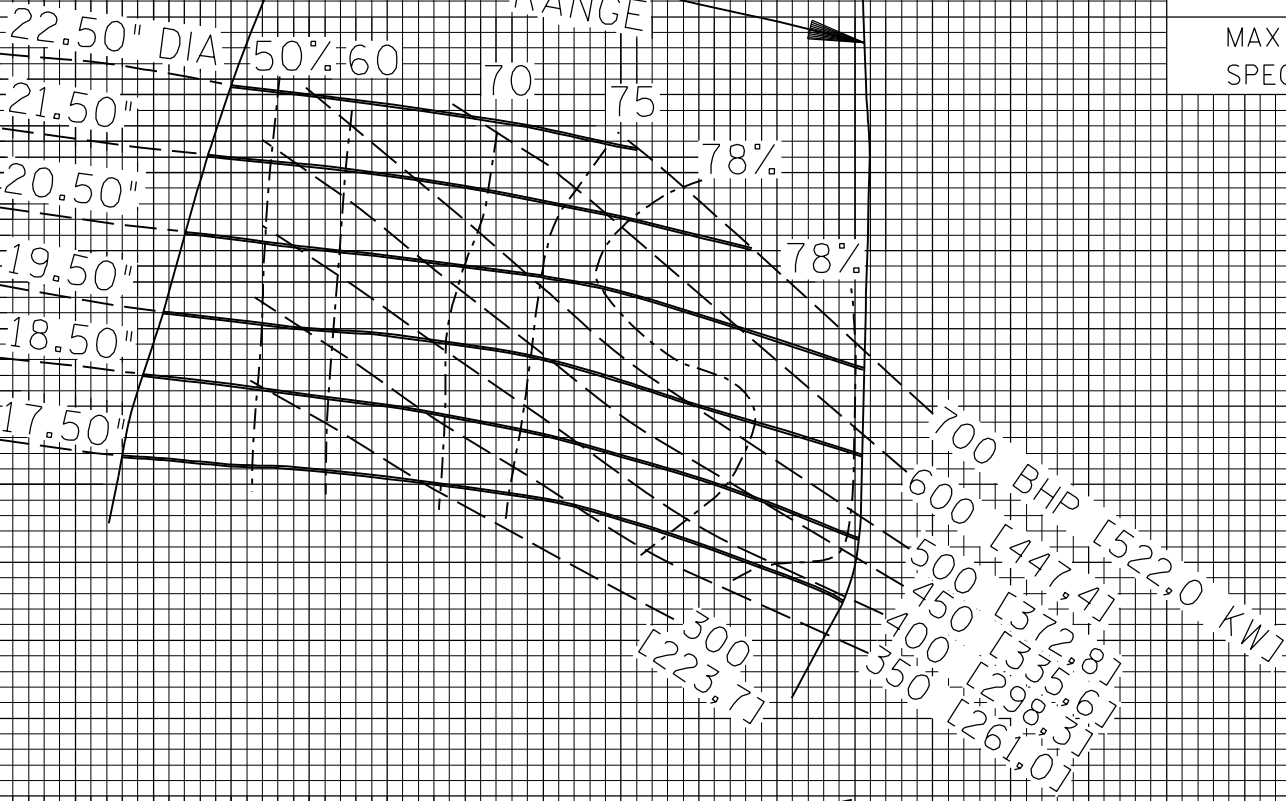
IMPELLER 38621-783 MODEL 6510A-B

SIZE 12"X10" IMP.DIA. NOTED

SP.GR. 1.0 RPM 1800

MAX OPERATING PRESSURE 250 PSI
SPECIFY PLUMBING ACCORDINGLY.

OPERATING RANGE



NPSH

FT M

30 10

20 8

10 6

0 4

0 2

0 0

U.S. GALLONS PER MINUTE X 100

LITRES PER SECOND X 10

CUBIC METRES PER HOUR X 100

0 5 10 15 20 25 30 35 40 45 50 55 60 65 70 75 80 85 90 95 100
0 5 10 15 20 25 30 35 40 45 50 55 60 65
0 1 2 3 4 5 6 7 8 9 10 11 12 13 14 15 16 17 18 19 20 21 22 23



FILE NO. 6510cb.s02