

TOTAL HEAD

2.50" DIA. SPHERICAL SOLIDS

PERFORMANCE CURVE

VOLUTE 7748 CURVE 16A-B-3

IMPELLER 7759-B MODEL 16A-B

TEST PERFORMANCE
70°F clear water at sea level
2 foot horizontal offset with
6 inch suction pipe.

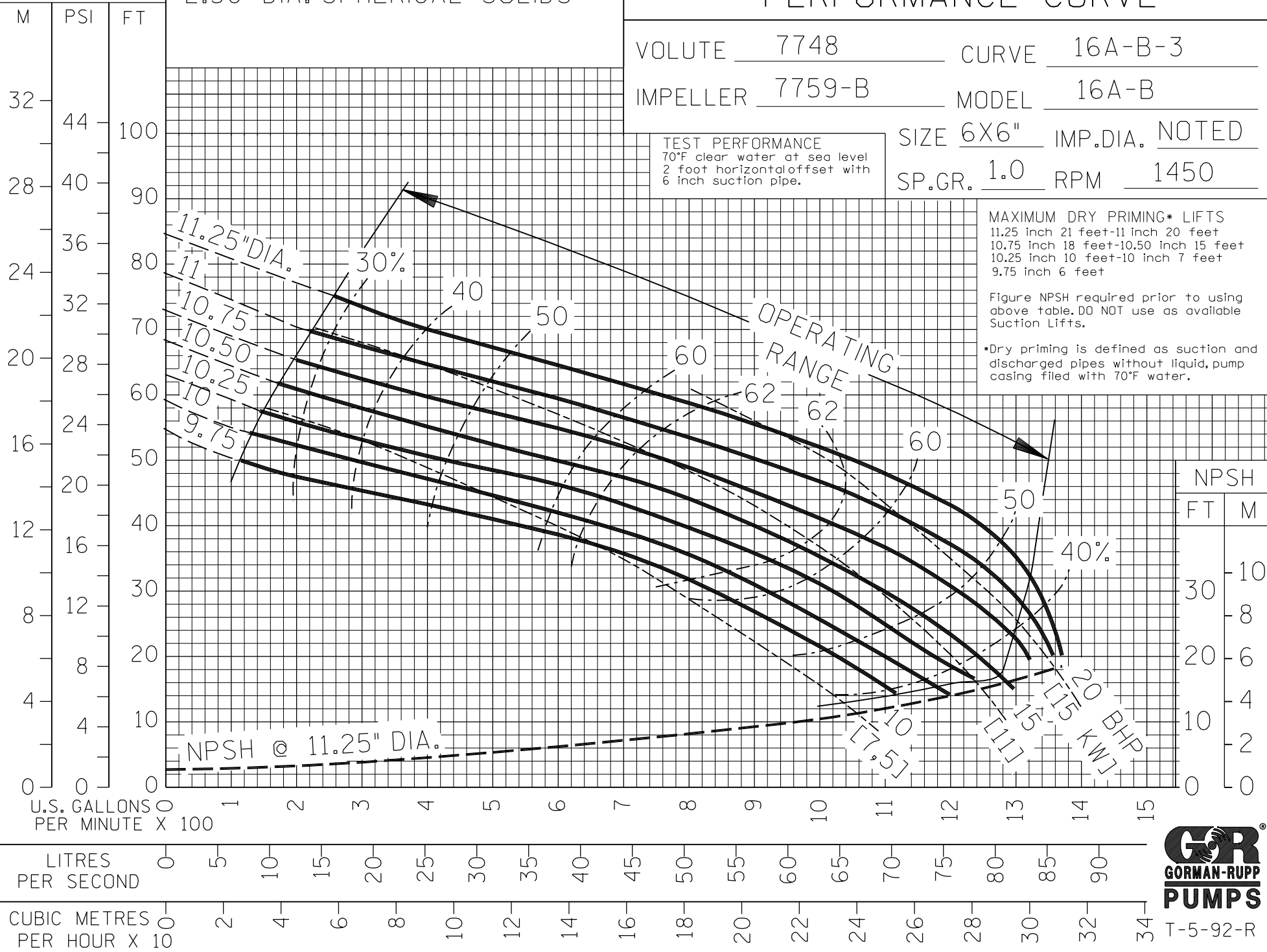
SIZE 6X6" IMP.DIA. NOTED

SP.GR. 1.0 RPM 1450

MAXIMUM DRY PRIMING* LIFTS
11.25 inch 21 feet-11 inch 20 feet
10.75 inch 18 feet-10.50 inch 15 feet
10.25 inch 10 feet-10 inch 7 feet
9.75 inch 6 feet

Figure NPSH required prior to using
above table. DO NOT use as available
Suction Lifts.

*Dry priming is defined as suction and
discharged pipes without liquid, pump
casing filed with 70°F water.



FILE NO. 16AB.S03



T-5-92-R