

TOTAL HEAD

M PSI FT

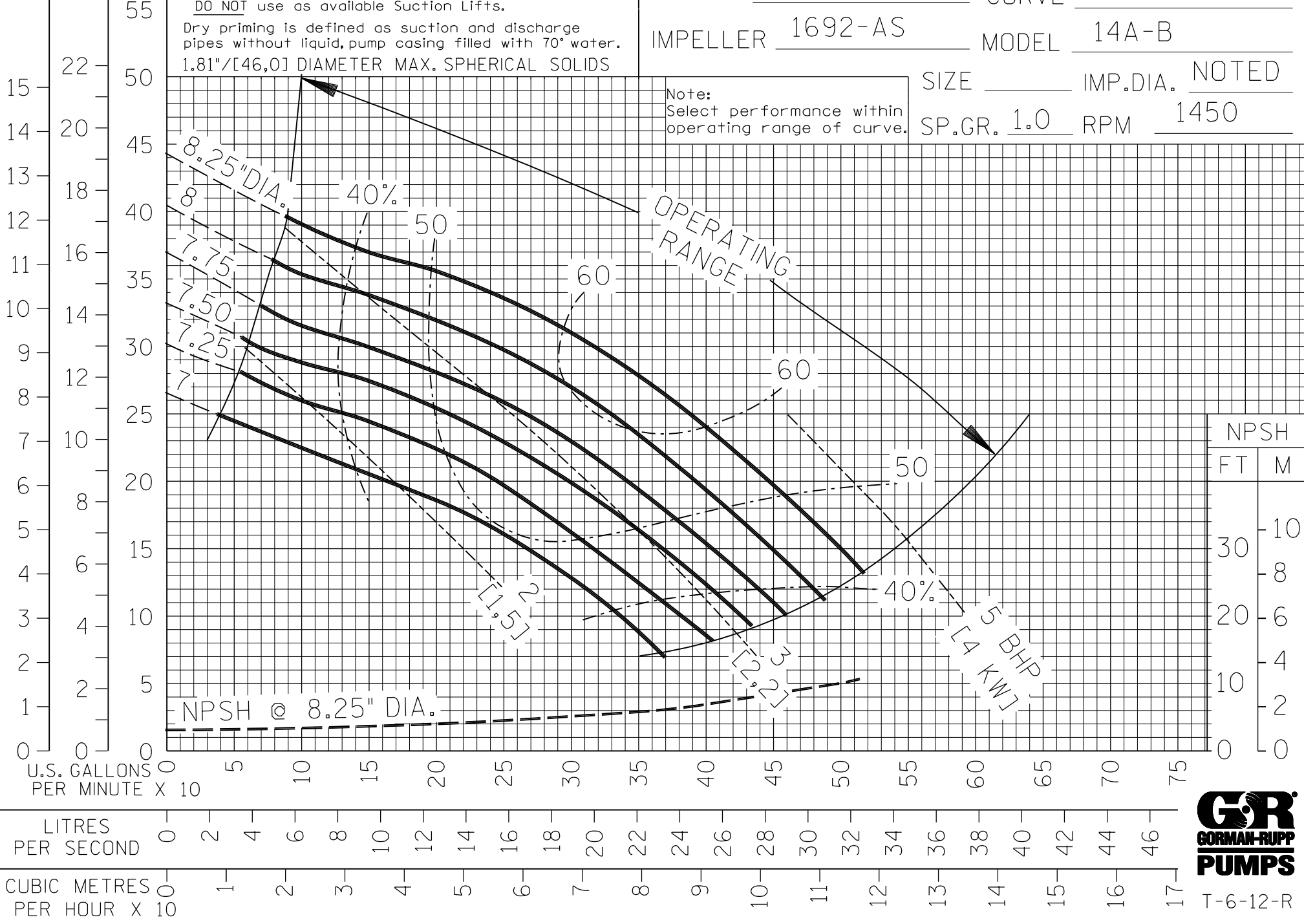
MAXIMUM DRY PRIMING LIFTS						
DIA.	7.00"	7.25"	7.50"	7.75"	8.00"	8.25"
FEET	8	11	12	11	11	10
METERS	2,4	3,4	3,7	3,4	3,4	3,0

Figure NPSH required prior to using above table.
 DO NOT use as available Suction Lifts.
 Dry priming is defined as suction and discharge pipes without liquid, pump casing filled with 70° water.
 1.81"/[46,0] DIAMETER MAX. SPHERICAL SOLIDS

PERFORMANCE CURVE

VOLUTE 2526 CURVE 14A-B-3
 IMPELLER 1692-AS MODEL 14A-B
 SIZE _____ IMP.DIA. NOTED
 SP.GR. 1.0 RPM 1450

Note:
 Select performance within operating range of curve.



FILE NO. 14AB.S03



T-6-12-R