

TOTAL HEAD

MAXIMUM DRY PRIMING LIFTS

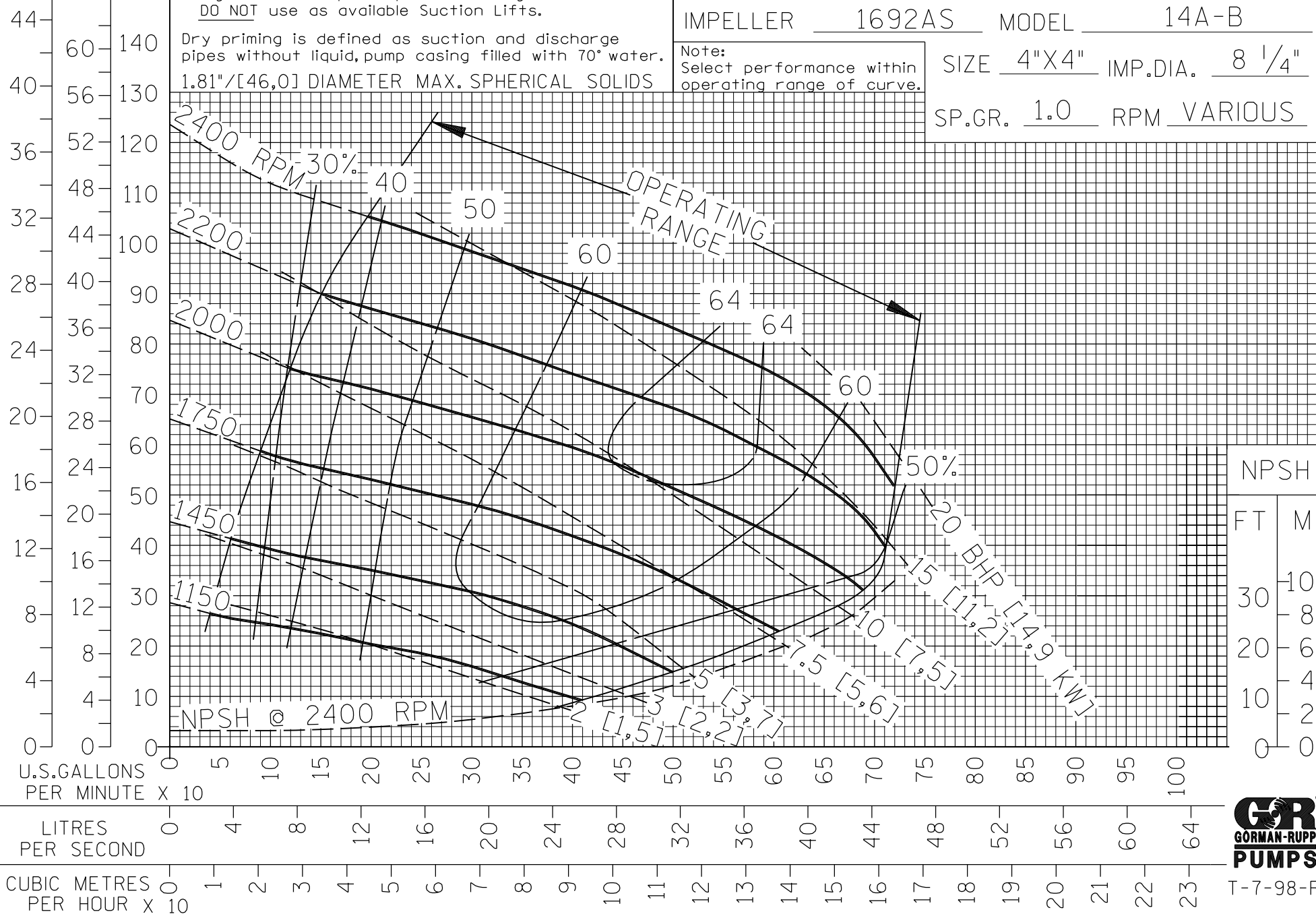
RPM	1150	1450	1750	2000	2200	2400
FEET	12	10	15	21	22	23
METERS	3,7	3,1	4,6	6,4	6,7	7

PERFORMANCE CURVE

VOLUTE 2526 CURVE 14A-B-1
 IMPELLER 1692AS MODEL 14A-B
 Note: Select performance within operating range of curve.
 SIZE 4"X4" IMP.DIA. 8 1/4"
 SP.GR. 1.0 RPM VARIOUS

Figure NPSH required prior to using above table.
 DO NOT use as available Suction Lifts.

Dry priming is defined as suction and discharge pipes without liquid, pump casing filled with 70° water.
 1.81"/[46,0] DIAMETER MAX. SPHERICAL SOLIDS



FILE NO. 14AB.S01

NPSH
 FT M
 30 10
 20 6
 10 2
 0 0



T-7-98-R