

TOTAL HEAD

MAXIMUM DRY PRIMING LIFTS

DIA.	6.25	6.50	6.75	7.00	7.25
FEET	15	15	19	21	25
METERS	3,7	4,9	5,2	5,8	6,1

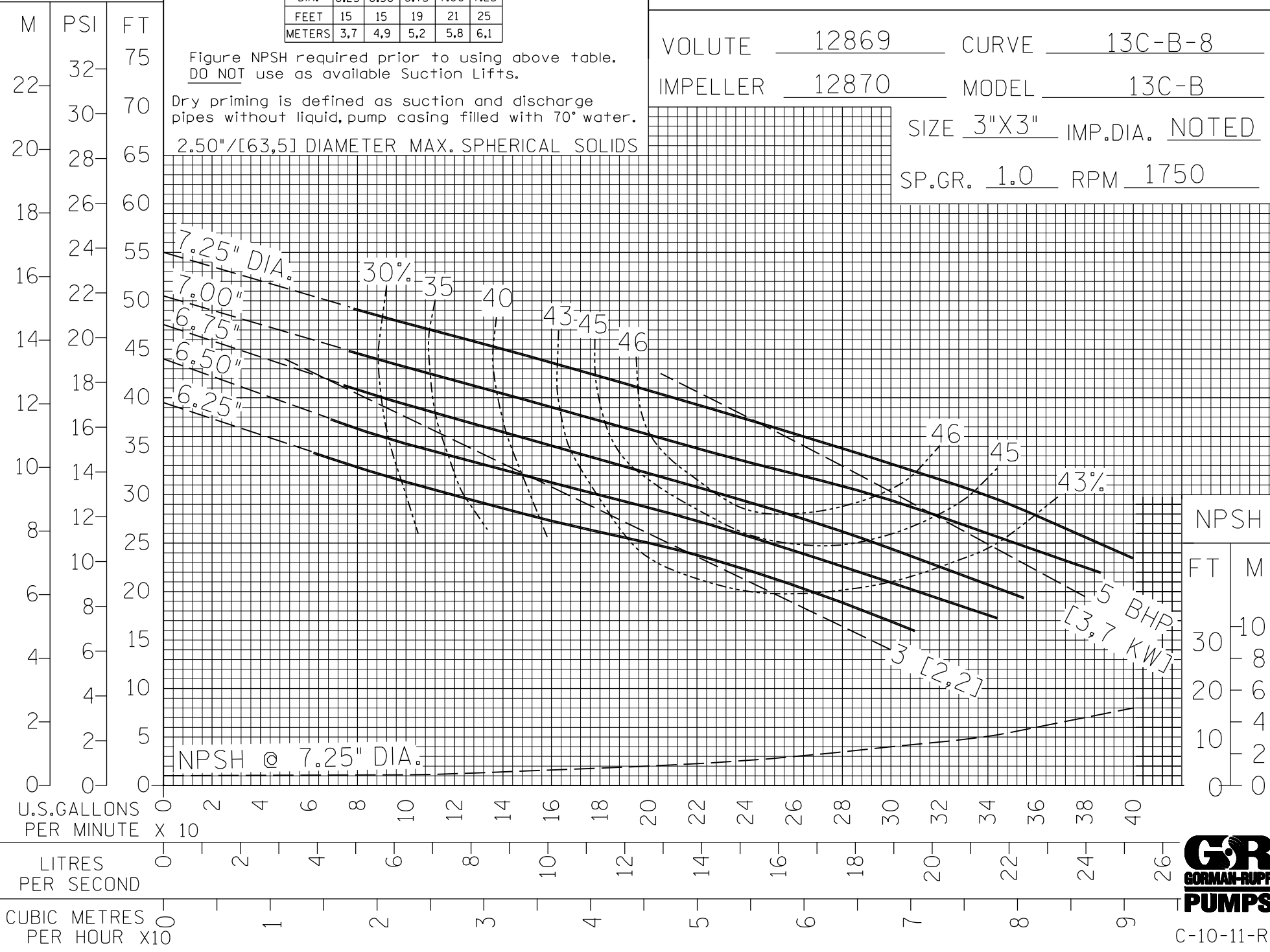
PERFORMANCE CURVE

VOLUTE 12869 CURVE 13C-B-8
 IMPELLER 12870 MODEL 13C-B
 SIZE 3"X3" IMP.DIA. NOTED
 SP.GR. 1.0 RPM 1750

Figure NPSH required prior to using above table.
 DO NOT use as available Suction Lifts.

Dry priming is defined as suction and discharge pipes without liquid, pump casing filled with 70° water.

2.50"/[63,5] DIAMETER MAX. SPHERICAL SOLIDS



FILE NO. 13CB.S08



C-10-11-R