

TOTAL HEAD

1.00"/[25,4 MM] DIA. MAX. SPHERICAL SOLIDS

# PERFORMANCE CURVE

12367 CI  
VOLUTE 12367B SST CURVE 11 1/2A-B-4

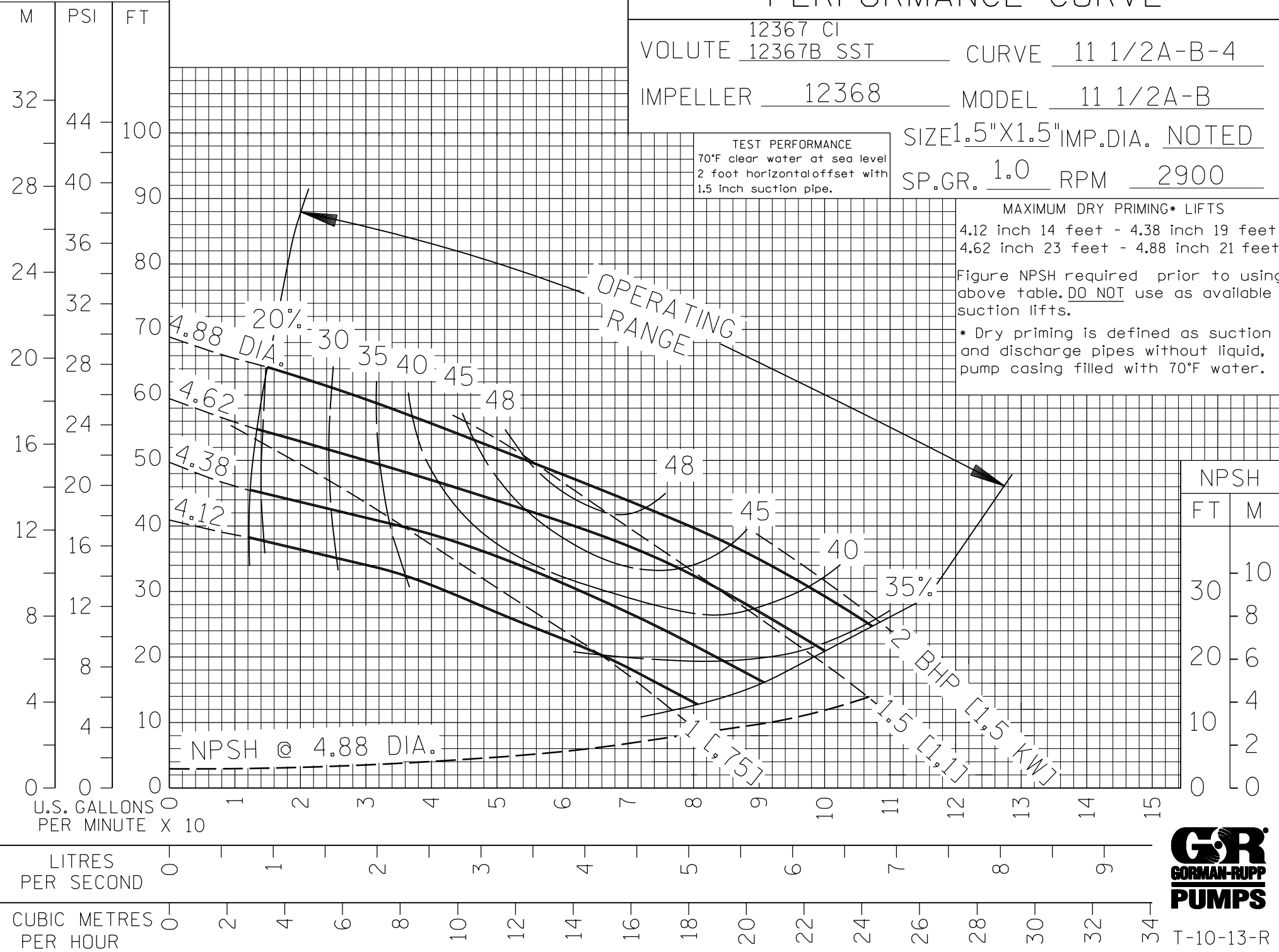
IMPELLER 12368 MODEL 11 1/2A-B

SIZE 1.5"X1.5" IMP. DIA. NOTED

SP. GR. 1.0 RPM 2900

TEST PERFORMANCE  
70°F clear water at sea level  
2 foot horizontal offset with  
1.5 inch suction pipe.

MAXIMUM DRY PRIMING\* LIFTS  
4.12 inch 14 feet - 4.38 inch 19 feet  
4.62 inch 23 feet - 4.88 inch 21 feet  
Figure NPSH required prior to using  
above table. DO NOT use as available  
suction lifts.  
\* Dry priming is defined as suction  
and discharge pipes without liquid,  
pump casing filled with 70°F water.



NPSH	
FT	M
0	0
10	3
20	6
30	9
40	12
50	15
60	18
70	21
80	24
90	27
100	30

FILE NO. 11y50ab.s04



T-10-13-R