

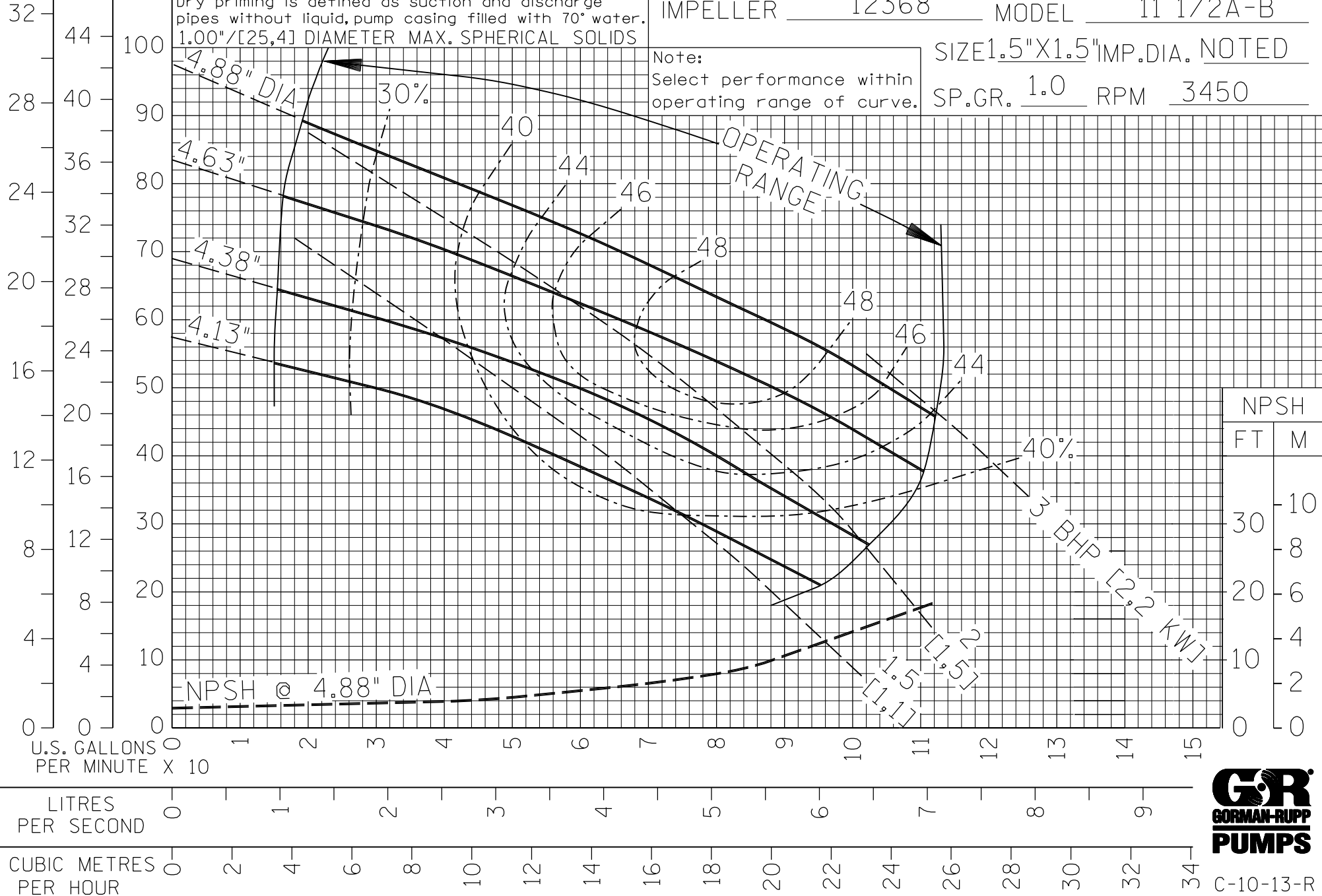
TOTAL HEAD

MAXIMUM DRY PRIMING LIFTS				
RPM	4.13	4.38	4.63	4.88
FEET	17	20	23	23
METERS	5,3	6,1	7,0	7,0

PERFORMANCE CURVE

12367 CI
 VOLUTE 12367B SST CURVE 11 1/2A-B-3
 IMPELLER 12368 MODEL 11 1/2A-B
 Note: Select performance within operating range of curve.
 SIZE 1.5"X1.5" IMP. DIA. NOTED
 SP. GR. 1.0 RPM 3450

Figure NPSH required prior to using above table.
 DO NOT use as available Suction Lifts.
 Dry priming is defined as suction and discharge pipes without liquid, pump casing filled with 70° water.
 1.00"/[25,4] DIAMETER MAX. SPHERICAL SOLIDS



FILE NO. 11Y50AB.S03



C-10-13-R