

TOTAL HEAD

MAXIMUM DRY PRIMING LIFTS

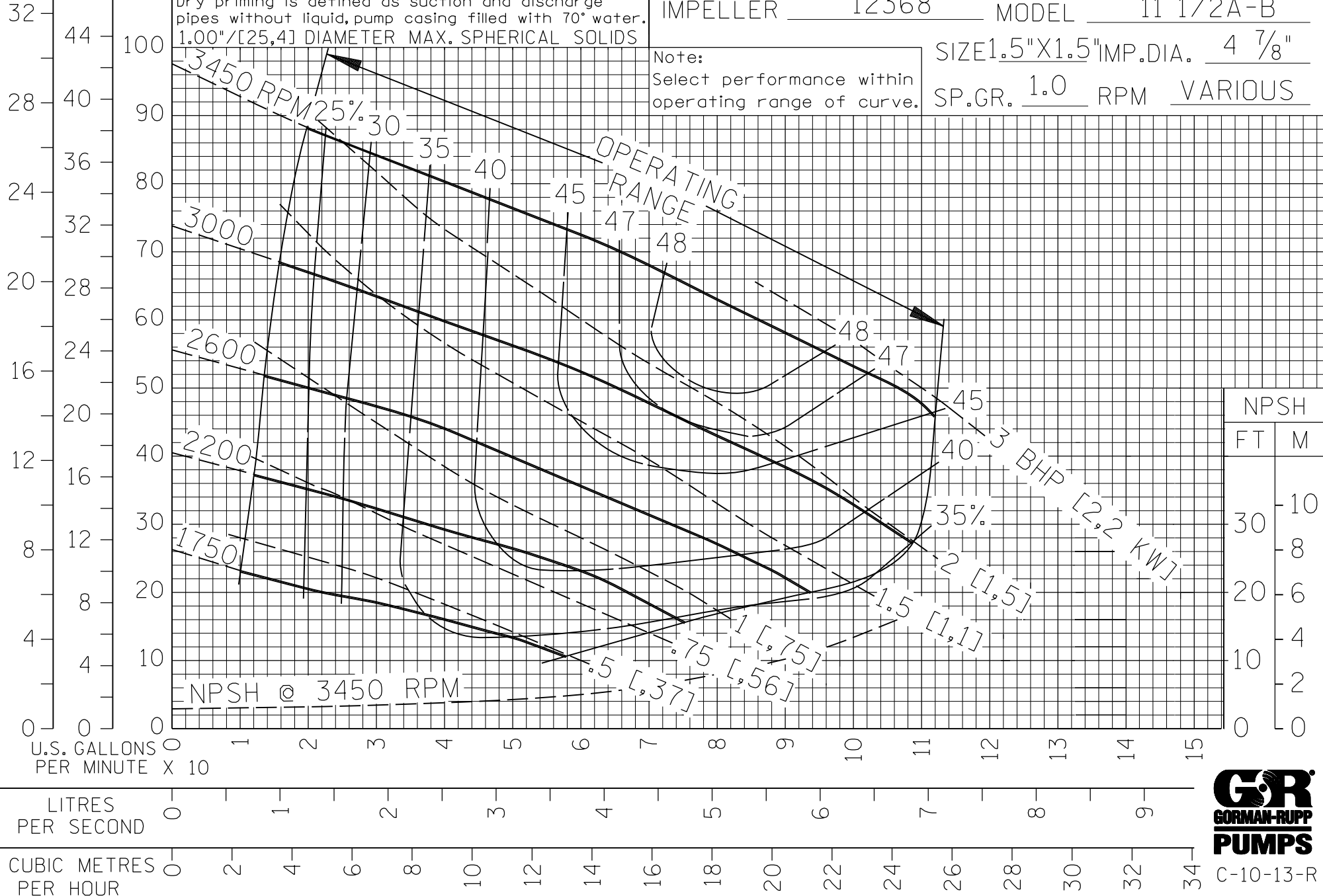
RPM	1750	2200	2600	3000	3450
FEET	13	18	20	21	23
METERS	3,9	5,5	6,1	6,4	7

PERFORMANCE CURVE

VOLUTE 12367 CI
12367B SST CURVE 11 1/2A-B-1
 IMPELLER 12368 MODEL 11 1/2A-B
 SIZE 1.5" X 1.5" IMP. DIA. 4 7/8"
 SP. GR. 1.0 RPM VARIOUS

Figure NPSH required prior to using above table.
 DO NOT use as available Suction Lifts.
 Dry priming is defined as suction and discharge pipes without liquid, pump casing filled with 70° water.
 1.00" / [25,4] DIAMETER MAX. SPHERICAL SOLIDS

Note:
 Select performance within operating range of curve.



NPSH	
FT	M
30	10
20	6
10	3
0	0



C-10-13-R

FILE NO. 1112AB.S01